

Labour market statistics

July 2011



Date: 13 July 2011

Coverage: United Kingdom **Theme:** Labour Market

For March to May 2011:

The employment rate was 70.7 per cent and there were 29.28 million employed people.

The unemployment rate was 7.7 per cent and there were 2.45 million unemployed people.

The inactivity rate was 23.2 per cent and there were 9.33 million inactive people aged from 16 to 64.

Total pay (including bonuses) rose by 2.3 per cent on a year earlier.

Regular pay (excluding bonuses) rose by 2.1 per cent on a year earlier.

Headline labour market indicators (seasonally adjusted), March to May 2011

Labour Force Survey indicators (United Kingdom)	Number of people (thousands)		Rates (percentages)	
	Latest estimate	Change since December 2010 to February 2011	Latest estimate	Change since December 2010 to February 2011
Number in employment (aged 16+) and rate (aged 16 to 64)	29,279	50	70.7	0.0
Unemployment (aged 16+)	2,452	-26	7.7	-0.1
Inactivity (aged 16 to 64)	9,329	32	23.2	0.1

Average Weekly Earnings (Great Britain)	Average weekly pay for May 2011 (£ sterling)	Annual growth rate: percentage change between Mar-May 2010 and Mar-May 2011
Total pay (including bonuses)	461	2.3
Regular pay (excluding bonuses)	434	2.1

For June 2011:

The number of people claiming Jobseeker's allowance (the Claimant count) was 1.52 million.

Claimant count (seasonally adjusted), June 2011

Jobseeker's allowance claimants (United Kingdom, aged 18+)	Number of people (thousands)		Rates (percentages)	
	Latest estimate	Change since May 2011	Latest estimate	Change since May 2011
	1,520.1	24.5	4.7	0.1

Summary of labour market statistics published on 13 July 2011

A video explaining this story is available on the ONS You Tube channel at: <http://www.youtube.com/user/onsstats>

The **unemployment rate** for the three months to May 2011 was 7.7 per cent of the economically active population, down 0.1 on the quarter. The total **number of unemployed people** fell by 26,000 over the quarter to reach 2.45 million. The number of people unemployed for up to one year increased by 11,000 over the quarter to reach 1.64 million. The number of people unemployed for over one year fell by 37,000 to reach 807,000. The quarterly fall in unemployment occurred mainly among people aged from 16 to 24. The number of unemployed people in this age group fell by 42,000 over the quarter to reach 917,000.

The **inactivity rate** for those aged from 16 to 64 for the three months to May 2011 was 23.2 per cent, up 0.1 on the quarter. The **number of economically inactive people** aged from 16 to 64 increased by 32,000 over the quarter to reach 9.33 million. This increase in inactivity was mainly due to an increase of 41,000 in the number of students not active in the labour market to reach 2.27 million. The total number of 16 to 24 year olds in full-time education increased by 35,000 on the quarter to reach 3.06 million. The number of people in this age group not in full-time education fell by 42,000 to reach 4.26 million.

The **employment rate** for those aged from 16 to 64 for the three months to May 2011 was 70.7 per cent, unchanged on the quarter. The **number of people in employment aged 16 and over** increased by 50,000 on the quarter and by 309,000 on the year to reach 29.28 million. The number of people in employment is 293,000 lower than the pre-recession peak of 29.57 million recorded for the three months to May 2008. The number of employees and self-employed people working part-time because they could not find a full-time job increased by 80,000 on the quarter to reach 1.25 million, the highest figure since comparable records began in 1992.

There were 1.52 million people claiming **Jobseeker's Allowance (JSA)** in June 2011, up 24,500 on May. The number of men claiming JSA increased by 15,000 to reach 1.03 million and the number of women claimants increased by 9,500 to reach 493,900, the highest figure since August 1996.

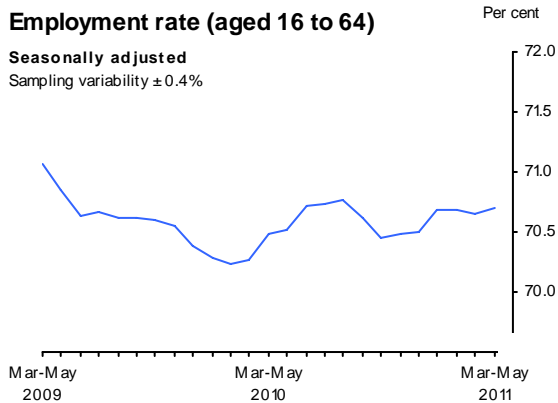
In the three months to May 2011, 144,000 people had become redundant in the three months before the Labour Force Survey interviews, up 16,000 over the quarter. This increase in **redundancies** occurred mainly among women.

The whole economy **earnings annual growth rate for total pay** (including bonuses) was 2.3 per cent for the three months to May 2011, up from 2.0 per cent for the three months to April. The whole economy **earnings annual growth rate for regular pay** (excluding bonuses) was 2.1 per cent for the three months to May 2011, up from 2.0 per cent for the three months to April. These increases in the growth rates for total pay and regular pay were driven by the private sector.

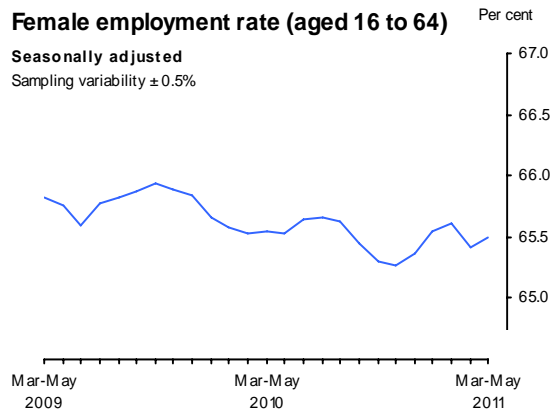
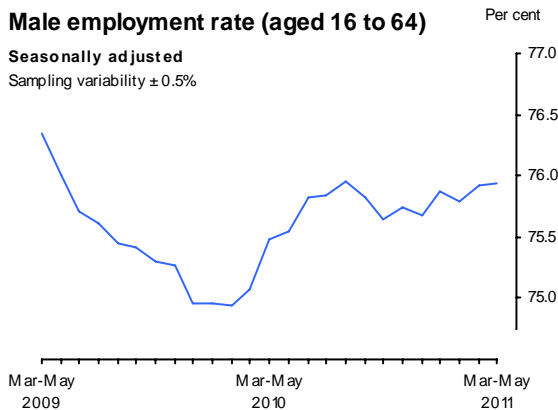
Detailed Commentary

Employment (Tables 2 to 4, and 8)

The employment rate for those aged from 16 to 64 was 70.7 per cent in the three months to May 2011, unchanged on the three months to February 2011 but up 0.2 percentage points from a year earlier.



The employment rate for men aged from 16 to 64 was 75.9 per cent, up 0.1 percentage point on the previous quarter. The corresponding employment rate for women was 65.5 per cent, unchanged on the previous quarter.



The number of people in employment was 29.28 million in the three months to May 2011, up 50,000 from the three months to February 2011 and up 309,000 on a year earlier. The number of people in full-time employment was 21.32 million in the three months to May 2011, up 19,000 from the three months to February 2011. Of this total, 13.66 million were men and 7.66 million were women. The number of people in part-time employment was 7.96 million in the three months to May 2011, up 31,000 from the three months to February 2011. Of this total, 2.05 million were men and 5.91 million were women.

The number of people in public sector employment was 6.16 million in March 2011, down 24,000 from December 2010. The estimate for March 2011 includes 15,000 people employed on a

temporary basis in connection with the 2011 Census. Excluding temporary Census employment there were 6.15 million people employed in the public sector in March 2011, down 39,000 from December 2010. The number of people in private sector employment in March 2011 was 23.08 million, up 104,000 from December 2010.

Employment by country of birth and nationality (not seasonally adjusted), tables 8 & 8(1)

ONS publishes estimates of employment by both country of birth and by nationality. The number of non-UK born people in employment is greater than the number of non-UK nationals in employment, as the non-UK born series includes many UK nationals. The estimates relate to the number of people in employment rather than the number of jobs. These statistics have sometimes been incorrectly interpreted as indicating the proportion of new jobs that are taken by foreign migrants.

The number of UK born people in employment was 25.09 million in the three months to March 2011, up 77,000 on a year earlier. The number of non-UK born people in employment was 4.04 million, up 334,000 from a year earlier.

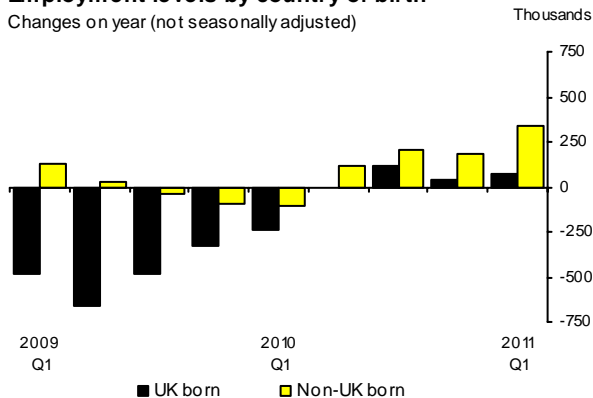
The employment rate for UK born people aged from 16 to 64 was 71.0 per cent in the three months to March 2011, up 0.3 percentage points on a year earlier. The corresponding employment rate for non-UK born people was 67.3 per cent, up 1.6 percentage points on a year earlier.

The number of UK nationals in employment was 26.64 million in the three months to March 2011, up 177,000 on a year earlier. The number of non-UK nationals in employment was 2.50 million, up 239,000 from a year earlier.

The employment rate for UK nationals aged from 16 to 64 was 70.7 per cent in the three months to March 2011, up 0.3 percentage points on a year earlier. The corresponding employment rate for non-UK nationals was 67.8 per cent, up 2.2 percentage points on a year earlier.

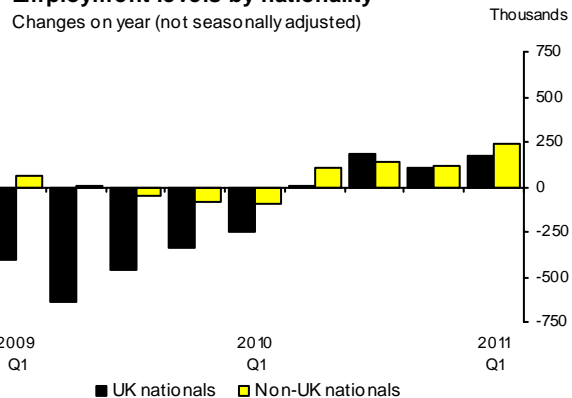
Employment levels by country of birth

Changes on year (not seasonally adjusted)



Employment levels by nationality

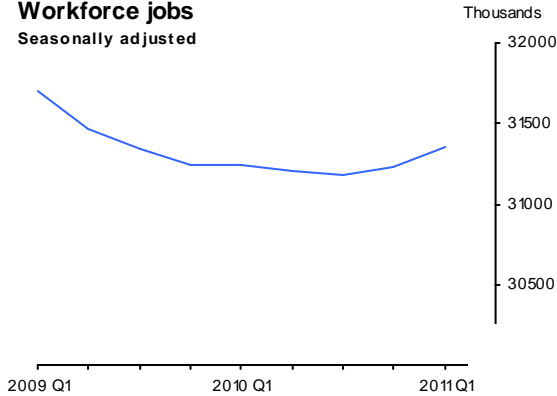
Changes on year (not seasonally adjusted)



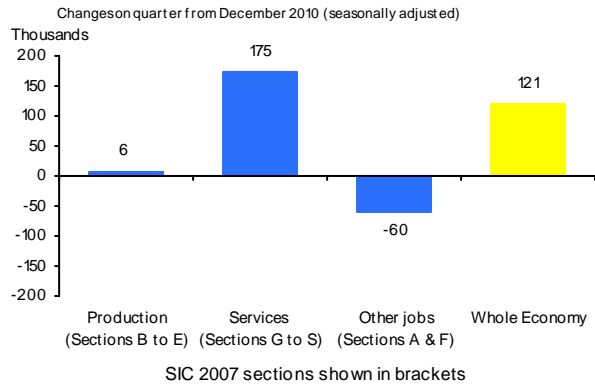
Jobs (tables 5 & 6)

There were 31.35 million workforce jobs in March 2011, up 121,000 over the quarter and up 113,000 on a year earlier. The sector showing the largest increase in jobs over the quarter was information and communication which increased by 50,000 to reach 1.19 million.

Workforce jobs
Seasonally adjusted



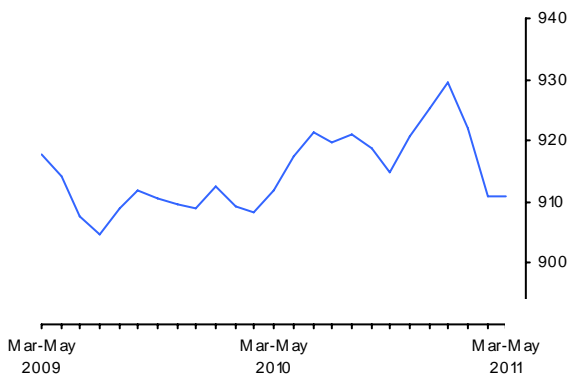
Workforce jobs by industry - March 2011



Actual hours worked (table 7)

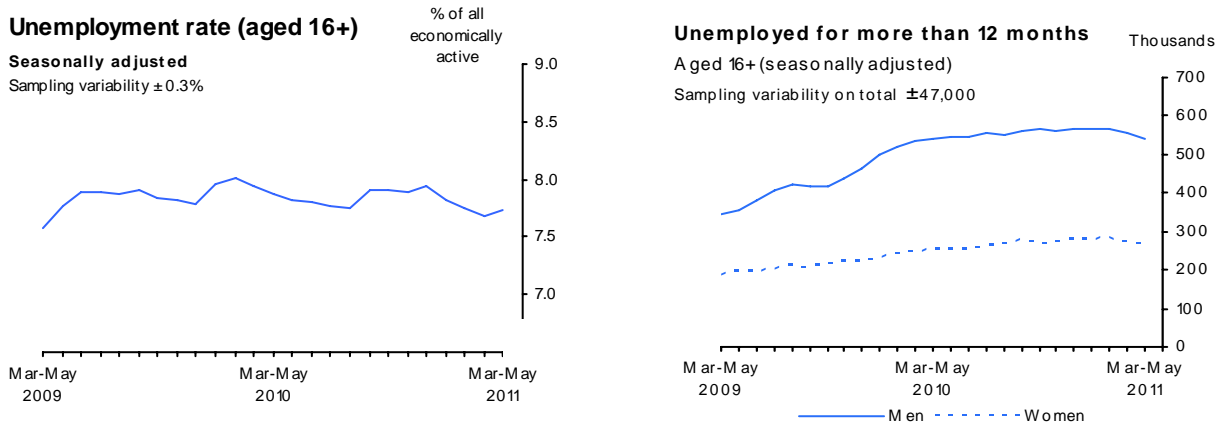
Total hours worked per week were 911.0 million in the three months to May 2011, down 18.6 million from the three months to February 2011. Average weekly hours worked in the three months to May 2011 were 31.2, down 0.7 from the three months to February 2011. The quarterly falls in the estimates of total hours worked and average weekly hours were partly due to an additional public holiday on 29 April 2011 (for the Royal Wedding) which occurred four days after the Easter Monday public holiday.

Total weekly hours (seasonally adjusted) Millions



Unemployment (table 9)

The unemployment rate was 7.7 per cent in the three months to May 2011, down 0.1 percentage point from the three months to February 2011 and from a year earlier. Unemployment rates are calculated, in accordance with international guidelines, as the percentage of all economically active people in the relevant population group.



The number of unemployed people was 2.45 million in the three months to May 2011, down 26,000 from the three months to February 2011 and down 23,000 from a year earlier. The number of unemployed men was 1.43 million in the three months to May 2011, down 15,000 from the three months to February 2011. The number of unemployed women was 1.03 million in the three months to May 2011, down 10,000 from the three months to February 2011. The number of people unemployed for over one year was 807,000 in the three months to May 2011, down 37,000 from the three months to February 2011. The number of people unemployed for over two years was 384,000 in the three months to May 2011, up 15,000 from the three months to February 2011.

Youth unemployment (Table 14)

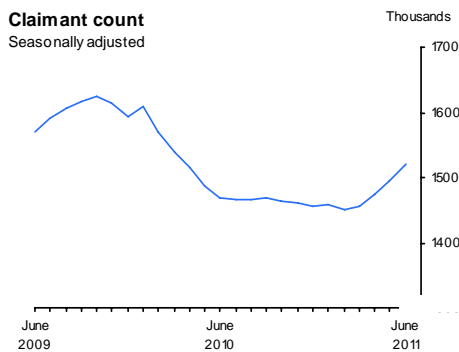
The unemployment rate for 16 to 24 year olds was 19.7 per cent of the economically active population in the three months to May 2011, down 0.7 percentage points from the three months to February 2011. There were 917,000 unemployed 16 to 24 year olds in the three months to May 2011, down 42,000 from the three months to February 2011.

The number of unemployed 16 to 17 year olds decreased by 16,000 on the quarter to reach 202,000 and the number of unemployed 18 to 24 year olds fell by 26,000 on the quarter to reach 715,000.

In accordance with international guidelines, people in full-time education are included in the youth unemployment estimates if they are looking for employment and are available to work. Excluding people in full-time education, there were 644,000 unemployed 16 to 24 year olds in the three months to May 2011, down 18,000 from the three months to February 2011. The unemployment rate for 16 to 24 year olds not in full-time education was 18.2 per cent of the economically active population, down 0.4 percentage points from the three months to February 2011.

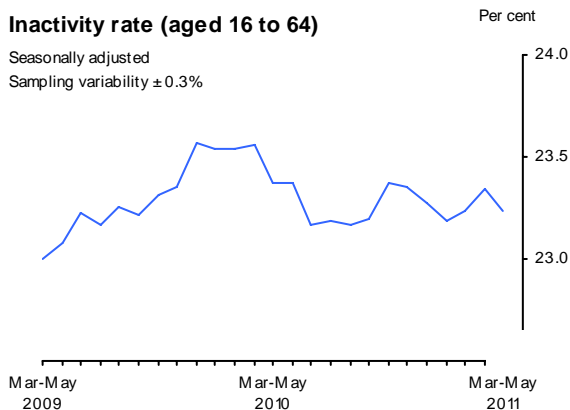
Claimant Count (tables 10 and 11)

The claimant count in June 2011 was 1.52 million, up 24,500 on the previous month and up 50,900 on a year earlier. The claimant count rate was 4.7 per cent, up 0.1 percentage point on the previous month and up 0.2 percentage points from a year earlier. A comparison between the claimant count (which measures the number of people claiming Jobseeker's Allowance) and unemployment (which measures people who meet the internationally agreed definition of unemployment) is available from the *Labour Market Overview* at: <http://www.statistics.gov.uk/StatBase/Product.asp?vlnk=1944>



Economic Inactivity (tables 1, 13 and 14)

The economic inactivity rate for those aged from 16 to 64 was 23.2 per cent in the three months to May 2011, up 0.1 percentage point from the three months to February 2011 but down 0.1 percentage point from a year earlier. The number of economically inactive people aged from 16 to 64 rose by 32,000 over the quarter but fell by 11,000 over the year, to reach 9.33 million in the three months to May 2011.



GB average earnings (tables 15 to 16)

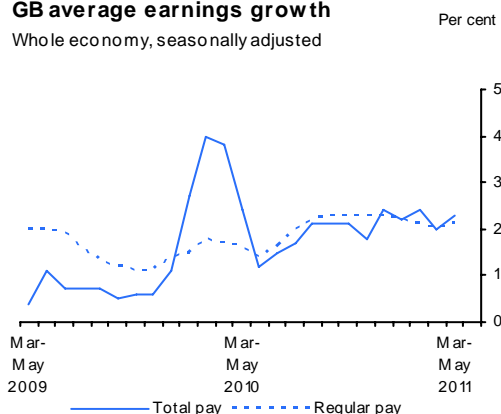
Whole economy earnings

Average total pay (including bonuses) was £461 per week in May 2011. In the three months to May 2011 total pay rose by 2.3 per cent on a year earlier, up 0.3 from the three months to April.

Average regular pay (excluding bonuses) was £434 per week in May 2011. In the three months to May 2011 regular pay rose by 2.1 per cent on a year earlier, up 0.1 from the three months to April.

GB average earnings growth

Whole economy, seasonally adjusted



Private sector earnings

Average total pay (including bonuses) in the private sector was £456 per week in May 2011. In the three months to May 2011 total pay in the private sector rose by 2.2 per cent on a year earlier.

Average regular pay (excluding bonuses) in the private sector was £424 per week in May 2011. In the three months to May 2011 regular pay in the private sector rose by 2.1 per cent on a year earlier.

Public sector earnings

Average total pay (including bonuses) in the public sector was £464 per week in May 2011. In the three months to May 2011 total pay in the public sector rose by 2.1 per cent on a year earlier.

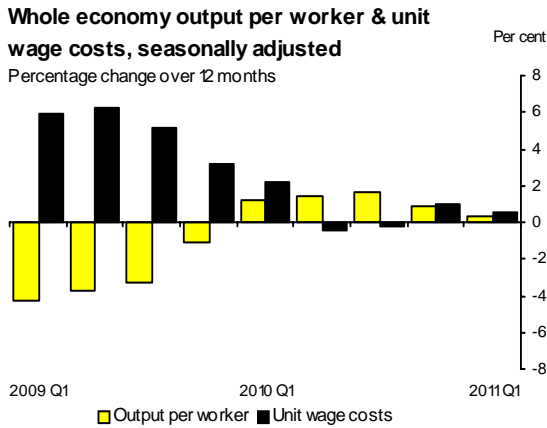
Average total pay in the public sector, excluding financial services, was £456 per week in May 2011. In the three months to May 2011 total pay in the public sector, excluding financial services, rose by 1.9 per cent on a year earlier.

Average regular pay (excluding bonuses) in the public sector was £470 per week in May 2011. In the three months to May 2011 regular pay in the public sector rose by 2.3 per cent on a year earlier.

Average regular pay in the public sector, excluding financial services, was £463 per week in May 2011. In the three months to May 2011 regular pay in the public sector, excluding financial services, rose by 2.0 per cent on a year earlier.

Productivity and unit wage costs (table 17)

Whole economy output per worker was 0.3 per cent higher in the first quarter of 2011 compared with a year earlier. Whole economy unit wage costs rose by 0.6 per cent over the same period.



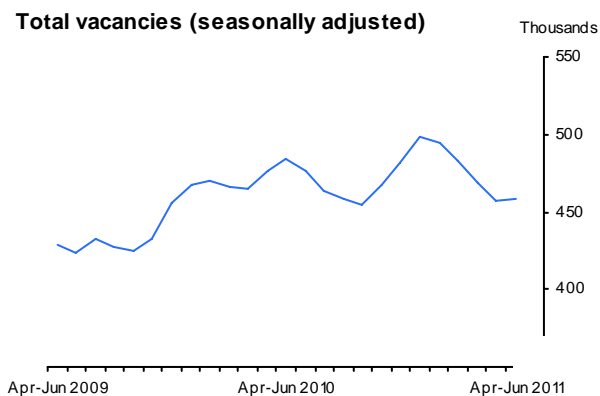
Labour disputes (table 20)

In May 2011, there were 11,000 working days lost from 20 stoppages. In the twelve months to May 2011, there were 152,000 working days lost from 112 stoppages.

Vacancies (tables 21 to 22)

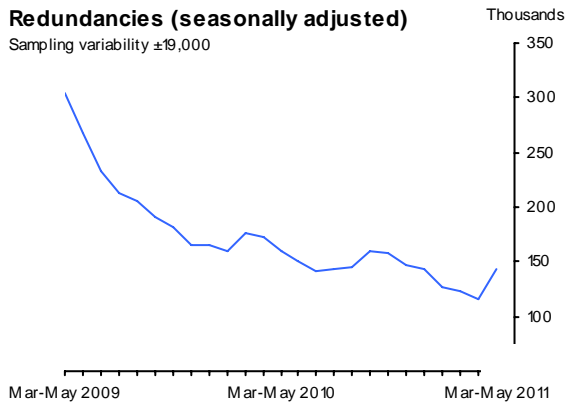
There were 458,000 job vacancies in the three months to June 2011, down 26,000 on both the three months to March 2011 and on a year earlier. The estimates for the three months to March 2011 include 19,000 vacancies for temporary jobs in connection with the 2011 Census but there were no such vacancies in the three months to June 2011. Excluding these Census vacancies, there was a fall of 7,000 vacancies between the three months to March and the three months to June.

There were 1.7 vacancies per 100 employee jobs in the three months to June 2011, down 0.1 on both the previous quarter and the year.



Redundancies (tables 23 and 24)

In the three months to May 2011, 144,000 people had become redundant in the three months before the Labour Force Survey interviews, up 16,000 from the three months to February 2011 but down 15,000 from a year earlier. The redundancy rate was 5.7 per 1,000 employees, up 0.6 from the previous quarter but down 0.7 from a year earlier.



Key out of work benefits (table 25)

In November 2010 the number of people claiming key out of work benefits (not seasonally adjusted) was 4.78 million, down 236,000 from November 2009.

Background Notes

This month's Statistical Bulletin

1. There are no major developments in this month's Statistical Bulletin.

Next month's Statistical Bulletin

2. On 30 June 2011 ONS published the 2010 mid-year population estimates for the UK. These population estimates will be used as new denominators for the key out of work benefit proportions shown at Table 25, resulting in revisions to these estimates from February 2010 onwards.

Experimental statistics

3. Experimental statistics are those which are in the testing phase and are not yet fully developed. Estimates of lone parent claimants of Jobseeker's Allowance, published at Table 10(1), are the only series in this Statistical Bulletin designated as experimental statistics. Further information on experimental statistics can be found on the website at:

<http://www.statistics.gov.uk/cci/nugget.asp?id=173>

Quality reporting

4. A **Summary Quality Report** for this Statistical Bulletin can be found on the website at:

<http://www.statistics.gov.uk/cci/article.asp?ID=1354>

5. One indication of the reliability of the key indicators in this Statistical Bulletin can be obtained by monitoring the size of revisions. The tables below record the size and pattern of revisions over the last five years. These indicators only report summary measures for revisions. The revised data itself may be subject to sampling or other sources of error. The ONS standard presentation is to show five years worth of revisions (60 observations for a monthly series, 20 for a quarterly series).

6. The table below covers Unemployment and Claimant Count data first published from August 2005 to July 2010. The employment rate revisions material shown in this table relate to the old working age employment rate which, since August 2010, has no longer been published in this Statistical Bulletin and it covers data first published from August 2004 to July 2009. It is not currently possible to produce revisions analysis for the employment rate for those aged from 16 to 64 as this is a new series published for the first time in August 2010. ONS will publish such an analysis once sufficient data allows.

Key Indicator	Value in latest period	Number of observations (maximum 60)	Revisions between first publication and estimates one year later	
			Average over the last five years (mean revision)	Average over the last five years without regard to sign (average absolute revision)
Employment rate (%)	70.7	60	0.00 (percentage points)	0.04 (percentage points)
Unemployment rate (%)	7.7	60	0.02 (percentage points)	0.03 (percentage points)
Claimant count (thousands)	1520.1	60	0.20 (thousands)	5.29 (thousands)

A statistical test has been applied to the average revision to find out if the mean revision is statistically significantly different from zero; this is indicated by an asterisk (*) in the above tables.

The table below covers Workforce Jobs data first published from September 2003 to June 2008.

Key Indicator	Value in latest period	Number of observations (maximum 20)	Revisions between first publication and estimates three years later (thousands)	
			Average over the last three years (mean revision)	Average over the last three years without regard to sign (average absolute revision)
Workforce jobs (thousands)	31,354	20	283.3	325.7

A statistical test has been applied to the average revision to find out if the mean revision is statistically significantly different from zero; this is indicated by an asterisk (*) in the above tables.

Spreadsheets giving revisions triangles of estimates and the calculations behind the averages in the tables are available on the National Statistics website at:

<http://www.statistics.gov.uk/StatBase/Product.asp?vlnk=1944>

7. Labour market statistics are revised in line with the revisions policy, which is on the website at:

http://www.statistics.gov.uk/about/Methodology_by_theme/downloads/LM_revisionspolicy.pdf

8. More information about the revisions material in this Statistical Bulletin can also be found on the website at: <http://www.statistics.gov.uk/cci/article.asp?ID=793>

Sampling variability of Labour Force Survey estimates

9. The tables below show sampling variabilities, calculated on not seasonally adjusted data, for the Labour Force Survey. These sampling variability ranges represent '95 per cent confidence intervals'. It is expected that in 95 per cent of samples the range would contain the true value.

Sampling variability of Labour Force Survey estimates: March to May 2011

	Level	Sampling variability of level	Change on quarter	Sampling variability of change on quarter	Change on year	Sampling variability of change on year
Employment (000s, aged 16+)	29,279	± 159	50	± 135	309	± 211
Employment rate (aged 16-64)	70.7%	± 0.4	0.0	± 0.3	0.2	± 0.5
Average weekly hours	31.2	± 0.2	-0.7	± 0.2	-0.4	± 0.2
Unemployment (000s, aged 16+)	2,452	± 81	-26	± 87	-23	± 111
Unemployment rate (aged 16+)	7.7%	± 0.3	-0.1	± 0.3	-0.1	± 0.4
Economically active (000s, aged 16+)	31,731	± 148	24	±127	286	± 196
Economic activity rate (aged 16-64)	76.8%	± 0.3	-0.1	± 0.3	0.1	± 0.5
Economically inactive (000s, aged 16-64)	9,329	± 138	32	± 119	-11	± 183
Economic inactivity rate (aged 16-64)	23.2%	± 0.3	0.1	± 0.3	-0.1	± 0.5
Redundancies (000s, aged 16+)	144	± 19	16	± 26	-15	± 28

Sampling variability of Labour Force Survey estimates of employment by country of birth and nationality: January to March 2011

	Level	Sampling variability
UK born people in employment (000s, aged 16+)	25,089	± 178
UK born employment rate (aged 16-64)	71.0%	± 0.4
Non UK born people in employment (000s, aged 16+)	4,044	± 115
Non UK born employment rate (aged 16-64)	67.3%	± 1.1
UK nationals in employment (000s, aged 16+)	26,636	± 173
UK nationals employment rate (aged 16-64)	70.7%	± 0.4
Non UK nationals in employment (000s, aged 16+)	2,501	± 99
Non UK nationals employment rate (aged 16-64)	67.8%	± 1.4

Sampling variability of regional Labour Force Survey estimates: March to May 2011

	Employment level, aged 16 and over (thousands)	Unemployment level, aged 16 and over (thousands)	Economic activity level, aged 16 and over (thousands)	Economic inactivity level, aged 16 to 64 (thousands)	Employment rate, aged 16 to 64 (%)	Unemployment rate, aged 16 and over (%)
North East	± 32	± 17	± 30	± 35	± 1.8	± 1.3
North West	± 53	± 28	± 49	± 59	± 1.2	± 0.8
Yorkshire & The Humber	± 48	± 24	± 47	± 57	± 1.4	± 0.9
East Midlands	± 36	± 19	± 34	± 45	± 1.4	± 0.9
West Midlands	± 48	± 25	± 44	± 53	± 1.3	± 0.8
East of England	± 46	± 23	± 43	± 49	± 1.2	± 0.8
London	± 64	± 36	± 60	± 67	± 1.1	± 0.8
South East	± 55	± 25	± 51	± 60	± 1.0	± 0.6
South West	± 46	± 21	± 43	± 51	± 1.3	± 0.8
Wales	± 33	± 16	± 30	± 38	± 1.7	± 1.1
Scotland	± 44	± 22	± 40	± 48	± 1.3	± 0.8

Sampling variability of Average Weekly Earnings (AWE) estimates

10. The sampling variability of the whole economy single month AWE growth rates (95 per cent confidence interval) are as follows:

- +/- 0.6 percentage points for regular pay (excluding bonuses) for all months.
- +/- 0.7 percentage points for total pay (including bonuses) from April to November
- +/- 0.9 percentage points for total pay from December to March

Sampling variability information for earnings growth at sector and industry level are published in the Average Weekly Earnings Supplementary tables at:

<http://www.statistics.gov.uk/statbase/product.asp?vlnk=14015>

Sampling variability of Vacancy Survey estimates

11. The sampling variability of the three month average vacancies level (95 per cent confidence interval) is around ± 1.5 per cent of that level. Further information on sampling variability for the vacancy survey is available from the *Report on the Triennial Review of the Vacancy Survey* which is available at:

http://www.statistics.gov.uk/downloads/theme_other/VacancyTriennialReviewReport2009a.pdf

Seasonal adjustment

12. Like many economic indicators, the labour market is affected by factors that tend to occur at around the same time every year; for example school leavers entering the labour market in June and whether Easter falls in March or April. In order to compare movements other than annual changes in labour market statistics, such as since the previous quarter or since the previous month, the data are seasonally adjusted to remove the effects of seasonal factors and the arrangement of the calendar. All series in this Statistical Bulletin are seasonally adjusted except where otherwise stated.

Relevant links

13. A number of videos relating to labour market statistics are available on the **ONS You Tube channel** at: <http://www.youtube.com/user/onsstats>

14. A number of stories relating to labour market statistics are available from *Nomis*® at: <https://www.nomisweb.co.uk/published/stories/contents.asp>

15. A comparison between **unemployment and Gross Domestic Product** is available at: <http://www.statistics.gov.uk/cci/nugget.asp?id=2294>

16. A **Guide to Labour Market Statistical Bulletins** can be found on the website at: <http://www.statistics.gov.uk/statbase/product.asp?vlnk=1947>

17. Labour market statistics **Concepts and Definitions** are available at: http://www.statistics.gov.uk/downloads/theme_labour/LMS_FR_HS_Concepts_Definitions.pdf

18. The **Labour Market Overview** provides a brief summary of the estimates published in this Statistical Bulletin and includes three annexes; Annex 1 (Comparison of employment and jobs estimates), Annex 2 (Experimental Single Month Labour Force Survey analysis), Annex 3 (Comparison of unemployment and claimant count estimates) and Annex 4 (Experimental Labour Force Survey flows estimates). This document is available at: <http://www.statistics.gov.uk/StatBase/Product.asp?vlnk=1944>

19. In addition to the data in this Statistical Bulletin, ONS can provide a wide range of labour market data in various formats. Historical time series data can be accessed from the **Labour Market Statistical Bulletin Historical Supplement** at:

http://www.statistics.gov.uk/OnlineProducts/LMS_FR_HS.asp

and from the **Time Series Data** service at:

<http://www.statistics.gov.uk/statbase/tsdintro.asp>.

The four-character identification codes appearing in the tables in this Statistical Bulletin are the ONS references for the data series on the Time Series Data service.

20. Regional and local area labour market data are published every month in spreadsheet format and can be accessed from:

<http://www.statistics.gov.uk/StatBase/Product.asp?vlnk=15084>

21. Further regional and local area labour market data are available from *Nomis*® at:

<http://www.nomisweb.co.uk>.

22. Further Labour Force Survey data are published in the **Labour Force Survey Historical Quarterly Supplement** at:

<http://www.statistics.gov.uk/onlineproducts/default.asp#labour>.

National Statistics website

23. The launch of the new ONS website on 28 August 2011 will bring changes to the design and format of statistical bulletins. The bulletin main body will be in html and pdf format but detailed data tables will be available as Excel spreadsheets only. The new website will improve the way users can access our statistics but many existing bookmarks and links will no longer work and users will need to update them. Find out more at:

<http://www.ons.gov.uk/about/what-we-do/programmes---projects/web-development/index.html>

Publication policy

24. Details of the policy governing the release of new data are available from the Media Relations Office. Also available is a list of the names of those given pre-publication access to the contents of this Statistical Bulletin.

25. National Statistics are produced to high professional standards set out in the Code of Practice for Official Statistics. They undergo regular quality assurance reviews to ensure that they meet customer needs. They are produced free from any political interference.

© Crown Copyright 2011.

Notes on the tables

26. Symbols used in the tables

- p Provisional
- .. Not available
- * Estimated total less than 9,500
- r Revised

.....
Next publication: Wednesday 17 August 2011

Issued by: Office for National Statistics, Government Buildings, Cardiff Road, Newport NP10 8XG

Media contact:

Tel **Media Relations Office 0845 604 1858**
 Emergency on-call 07867 906553
E-mail **press.office@ons.gov.uk**

Statistical contacts:

Tel	Richard Clegg	01633 455400	(Briefing)
Tel	Nick Palmer	01633 455839	(Labour Force Survey)
Tel	Bob Watson	01633 455070	(Claimant count, vacancies and benefits)
Tel	David Matthews	01633 456756	(Workforce jobs & public sector employment)
Tel	Eric Crane	01633 455092	(Earnings)
Tel	Ainslie Restieaux	01633 456299	(Productivity)
Tel	James Scruton	01633 456724	(Labour disputes)

E-mail **labour.market@ons.gov.uk**

Website **www.ons.gov.uk**

Summary of statistics published on 13 July 2011

Series	Reference period	Latest estimate	Last time higher	Last time lower	Comparable data start in
Employment level (aged 16+)	Mar-May 2011	29.279 million	Nov-Jan 2009 (29.328 million)	Feb-Apr 2011 (29.239 million)	Jan-Mar 1971
Employment rate (aged 16 to 64)	Mar-May 2011	70.7 per cent	Jul-Sep 2010 (70.8 per cent)	Feb-Apr 2011 (70.6 per cent)	Jan-Mar 1971
Unemployment level (aged 16+)	Mar-May 2011	2.452 million	Jan-Mar 2011 (2.455 million)	Feb-Apr 2011 (2.430 million)	Jan-Mar 1971
Unemployment rate (aged 16+)	Mar-May 2011	7.7 per cent	Dec-Feb 2011 (7.8 per cent)	Mar-May 2009 (7.6 per cent)	Jan-Mar 1971
Youth unemployment level (aged 16-24)	Mar-May 2011	917,000	Jan-Mar 2011 (935,000)	Feb-Apr 2011 (895,000)	Mar-May 1992
Youth unemployment rate (aged 16-24)	Mar-May 2011	19.7 per cent	Jan-Mar 2011 (20.0 per cent)	Feb-Apr 2011 (19.3 per cent)	Mar-May 1992
Inactivity level (aged 16 to 64)	Mar-May 2011	9.329 million	Feb-Apr 2011 (9.368 million)	Jan-Mar 2011 (9.323 million)	Jan-Mar 1971
Inactivity rate (aged 16 to 64)	Mar-May 2011	23.2 per cent	Feb-Apr 2011 (23.3 per cent)	Apr-Jun 2009 (23.1 per cent)	Jan-Mar 1971
Claimant Count level	June 2011	1.520 million	March 2010 (1.539 million)	May 2011 (1.496 million)	January 1971
Claimant Count rate	June 2011	4.7 per cent	March 2010 (4.8 per cent)	April 2011 (4.6 per cent)	January 1971
Average Earnings (total pay)	Mar-May 2011	2.3 per cent	Jan-Mar 2011 (2.4 per cent)	Feb-Apr 2011 (2.0 per cent)	Jan-Mar 2001
Average Earnings (regular pay)	Mar-May 2011	2.1 per cent	Dec-Feb 2011 (2.2 per cent)	Feb-Apr 2011 (2.0 per cent)	Jan-Mar 2001
Workforce jobs	March 2011	31.354 million	June 2009 (31.466 million)	December 2010 (31.233 million)	June 1959
Vacancies level	Apr-Jun 2011	458,000	Feb-Apr 2011 (469,000)	Mar-May 2011 (457,000)	Apr-Jun 2001
Vacancy ratio (per 100 employee jobs)	Apr-Jun 2011	1.7	Feb-Apr 2011 (1.8)	Sep-Nov 2009 (1.6)	Apr-Jun 2001

INDEX OF TABLES

Not seasonally adjusted tables are indicated by “NSA”. All other tables are seasonally adjusted.

SUMMARY

- 1 Summary of headline Labour Force Survey indicators
- 1a Summary of other headline indicators
- 2 Labour market status by age group

EMPLOYMENT AND JOBS

- 3 Full-time, part-time and temporary workers
- 4 Public and private sector employment
- 4(1) Public sector employment by industry
- 4(2) Public sector employment including and excluding financial corporations
- 5 Workforce jobs
- 6 Workforce jobs by industry
- 7 Actual weekly hours worked
- 7(1) Usual weekly hours of work
- 8 Employment levels by country of birth and nationality (NSA)
- 8(1) Employment rates (aged 16 to 64) by country of birth and nationality (NSA)

UNEMPLOYMENT

- 9 Unemployment by age and duration

CLAIMANT COUNT

- 10 Claimant count levels and rates
- 10(1) Claimant count: lone parent claimants by age of youngest child (NSA)
- 11 Claimant count by age and duration

ECONOMIC ACTIVITY AND INACTIVITY

- 12 Economic activity by age group
- 13 Economic inactivity: reasons
- 14 Educational status, economic activity & inactivity of young people

EARNINGS, PRODUCTIVITY & UNIT WAGE COSTS

- 15 Average weekly earnings – total pay
- 15(1) Average weekly earnings – bonus pay
- 16 Average weekly earnings – regular pay
- 17 Productivity and unit wage costs

REGIONAL AND INTERNATIONAL SUMMARY

- 18 Regional labour market summary
- 19 International comparisons

LABOUR DISPUTES

- 20 Labour disputes (NSA)

VACANCIES

- 21 Vacancies by size of business
- 21(1) Vacancies and unemployment
- 22 Vacancies by industry

REDUNDANCIES

- 23 Redundancies levels and rates
- 24 Redundancies by industry (NSA)

BENEFITS

- 25 Key out of work benefits (NSA)

SUMMARY

1 Summary of headline LFS¹ indicators

United Kingdom
(thousands) seasonally
adjusted

	LFS household population ¹		Headline indicators					
			Employment		Unemployment		Inactivity	
	All aged 16 & over	All aged 16 to 64	All aged 16 & over	All aged 16 to 64	All aged 16 & over	All aged 16 & over	All aged 16 to 64	All aged 16 to 64
People	MGSL	LF2O	MGRZ	LF24	MGSC	MGSX	LF2M	LF2S
Mar-May 2009	49,366	39,749	28,970	71.1	2,377	7.6	9,144	23.0
Mar-May 2010	49,752	39,964	28,969	70.5	2,475	7.9	9,340	23.4
Jun-Aug 2010	49,849	40,016	29,149	70.7	2,453	7.8	9,279	23.2
Sep-Nov 2010	49,941	40,059	29,092	70.4	2,495	7.9	9,364	23.4
Dec-Feb 2011	50,033	40,103	29,229	70.7	2,478	7.8	9,297	23.2
Mar-May 2011	50,126	40,147	29,279	70.7	2,452	7.7	9,329	23.2
<i>Change on quarter</i>	93	44	50	0.0	-26	-0.1	32	0.1
<i>Change %</i>	0.2	0.1	0.2		-1.0		0.3	
<i>Change on year</i>	374	183	309	0.2	-23	-0.1	-11	-0.1
<i>Change %</i>	0.8	0.5	1.1		-0.9		-0.1	
Men	MGSM	YBTG	MGSA	MGSV	MGSD	MGSY	YBSO	YBTM
Mar-May 2009	24,061	19,778	15,543	76.4	1,454	8.6	3,235	16.4
Mar-May 2010	24,273	19,891	15,483	75.5	1,492	8.8	3,402	17.1
Jun-Aug 2010	24,327	19,919	15,614	75.8	1,439	8.4	3,386	17.0
Sep-Nov 2010	24,377	19,942	15,605	75.6	1,474	8.6	3,400	17.1
Dec-Feb 2011	24,428	19,965	15,663	75.9	1,442	8.4	3,389	17.0
Mar-May 2011	24,479	19,989	15,713	75.9	1,427	8.3	3,396	17.0
<i>Change on quarter</i>	51	24	49	0.1	-15	-0.1	7	0.0
<i>Change %</i>	0.2	0.1	0.3		-1.1		0.2	
<i>Change on year</i>	206	98	230	0.5	-65	-0.5	-6	-0.1
<i>Change %</i>	0.8	0.5	1.5		-4.4		-0.2	
Women	MGSN	LF2P	MGSB	LF25	MGSE	MGSZ	LF2N	LF2T
Mar-May 2009	25,305	19,970	13,427	65.8	923	6.4	5,909	29.6
Mar-May 2010	25,479	20,072	13,487	65.5	984	6.8	5,938	29.6
Jun-Aug 2010	25,523	20,097	13,535	65.7	1,014	7.0	5,893	29.3
Sep-Nov 2010	25,564	20,117	13,487	65.3	1,021	7.0	5,964	29.6
Dec-Feb 2011	25,605	20,137	13,566	65.5	1,036	7.1	5,908	29.3
Mar-May 2011	25,646	20,158	13,566	65.5	1,026	7.0	5,933	29.4
<i>Change on quarter</i>	41	20	1	0.0	-10	-0.1	25	0.1
<i>Change %</i>	0.2	0.1	0.0		-1.0		0.4	
<i>Change on year</i>	168	85	80	0.0	42	0.2	-5	-0.1
<i>Change %</i>	0.7	0.4	0.6		4.2		-0.1	

Source: Labour Force Survey
Labour market statistics enquiries: labour.market@ons.gov.uk

1. The Labour Force Survey (LFS) is a survey of the population of private households, student halls of residence and NHS accommodation.
2. The headline employment rate is the number of people aged 16 to 64 in employment divided by the population aged 16 to 64.
3. The headline unemployment rate is the number of unemployed people (aged 16+) divided by the economically active population (aged 16+). The economically active population is defined as those in employment plus those who are unemployed.
4. The headline inactivity rate is the number of economically inactive people aged 16 to 64 divided by the population aged 16 to 64.

Note on headline employment, unemployment and inactivity rates

The headline employment and inactivity rates are based on the population aged 16 to 64 but the headline unemployment rate is based on the economically active population aged 16 and over. The employment and inactivity rates for those aged 16 and over are affected by the inclusion of the retired population in the denominators and are therefore less meaningful than the rates for those aged from 16 to 64. However, for the unemployment rate for those aged 16 and over, no such effect occurs as the denominator for the unemployment rate is the economically active population which only includes people in work or actively seeking and able to work.

Note on headline employment, unemployment and inactivity levels

The headline employment and unemployment levels are for those aged 16 and over; they measure all people in work or actively seeking and able to work. However, the headline inactivity level is for those aged 16 to 64. The inactivity level for those aged 16 and over is less meaningful as it includes elderly people who have retired from the labour force.

SUMMARY

1a Summary of other headline indicators

United Kingdom (thousands),
seasonally adjusted

	Workforce jobs ¹ DYDC	Public and private sector employment ¹		
		Public sector G7AU	Private sector G7K5	
2009		2009		
March	31,696	March	6,288	22,790
June	31,466	June	6,288	22,543
September	31,341	September	6,319	22,573
December	31,240	December	6,327	22,515
2010		2010		
March	31,242	March	6,305	22,557
June	31,201	June	6,276	22,869
September	31,182	September	6,240	22,881
December	31,233	December	6,186	22,973
2011		2011		
March	31,354	March	6,162	23,077
<i>Change on quarter</i>	<i>121</i>	<i>Change on quarter</i>	<i>-24</i>	<i>104</i>
<i>Change %</i>	<i>0.4</i>	<i>Change %</i>	<i>-0.4</i>	<i>0.5</i>
<i>Change on year</i>	<i>113</i>	<i>Change on year</i>	<i>-143</i>	<i>520</i>
<i>Change %</i>	<i>0.4</i>	<i>Change %</i>	<i>-2.3</i>	<i>2.3</i>

	Claimant count ²					
	Levels			Rates (%) ³		
	People	Men	Women	People	Men	Women
	BCJD	DPAE	DPAF	BCJE	DPAH	DPAI
2010						
June	1,469.2	1,052.2	417.0	4.6	6.1	2.8
July	1,465.4	1,044.1	421.3	4.6	6.0	2.9
August #	1,466.1	1,040.1	426.0	4.6	6.0	2.9
September	1,468.0	1,037.8	430.2	4.6	6.0	2.9
October #	1,462.8	1,030.0	432.8	4.6	5.9	2.9
November	1,460.0	1,022.0	438.0	4.5	5.9	3.0
December	1,454.6	1,013.0	441.6	4.5	5.8	3.0
2011						
January #	1,458.3	1,008.3	450.0	4.5	5.8	3.0
February	1,449.8	992.6	457.2	4.5	5.7	3.1
March	1,456.2	991.1	465.1	4.5	5.7	3.1
April #	1,473.1	997.9	475.2	4.6	5.7	3.2
May (r)	1,495.6	1,011.2	484.4	4.7	5.8	3.3
June (p)	1,520.1	1,026.2	493.9	4.7	5.9	3.3
<i>Change on month</i>	<i>24.5</i>	<i>15.0</i>	<i>9.5</i>	<i>0.1</i>	<i>0.1</i>	<i>0.1</i>
<i>Change %</i>	<i>1.6</i>	<i>1.5</i>	<i>2.0</i>			
<i>Change on year</i>	<i>50.9</i>	<i>-26.0</i>	<i>76.9</i>	<i>0.2</i>	<i>-0.1</i>	<i>0.5</i>
<i>Change %</i>	<i>3.5</i>	<i>-2.5</i>	<i>18.4</i>			

GB Whole economy earnings annual percentage growth rates

	Average weekly earnings (total pay) KAC3	Average weekly earnings (regular pay) KA19	Vacancies		
			Level	Vacancy Ratio ⁴	
			AP2Y	AP2Z	
Mar-May 2010	2.4 (r)	1.6	Apr-Jun 2010	484	1.8
Apr-Jun 2010	1.2	1.4	May-Jul 2010	476	1.8
May-Jul 2010	1.5 (r)	1.6	Jun-Aug 2010	463	1.8
Jun-Aug 2010	1.7	2.0	Jul-Sep 2010	458	1.7
Jul-Sep 2010	2.1	2.2	Aug-Oct 2010	455	1.7
Aug-Oct 2010	2.1	2.3	Sep-Nov 2010	468	1.8
Sep-Nov 2010	2.1	2.3	Oct-Dec 2010	481	1.8
Oct-Dec 2010	1.8	2.3			
Nov-Jan 2011	2.4	2.3	Nov-Jan 2011	498	1.9
Dec-Feb 2011	2.2	2.2	Dec-Feb 2011	495	1.9
Jan-Mar 2011	2.4	2.1	Jan-Mar 2011 (r)	483	1.8
Feb-Apr 2011	2.0 (r)	2.0	Feb-Apr 2011 (r)	469	1.8
Mar-May 2011 (p)	2.3	2.1	Mar-May 2011 (r)	457	1.7
			Apr-Jun 2011 (p)	458	1.7

1. See footnotes to Tables 4, 5 and 6.

2. The number of people claiming Jobseeker's Allowance.

3. Denominator = Claimant count + Workforce jobs.

4. Ratio of vacancies per 100 employee jobs.

Months where there are 5 weeks between count dates. All the rest are 4 week periods.

SUMMARY

2(1) Labour market status by age group

United Kingdom (thousands) seasonally adjusted

	Aged 16 and over						Aged 16-64					
	Employment		Unemployment		Inactivity		Employment		Unemployment		Inactivity	
	Level	Rate	Level	Rate	Level	Rate	Level	Rate	Level	Rate	Level	Rate
People	MGRZ	MGSR	MGSC	MGSX	MGSI	YBTC	LF2G	LF24	LF2I	LF2Q	LF2M	LF2S
Mar-May 2009	28,970	58.7	2,377	7.6	18,019	36.5	28,246	71.1	2,359	7.7	9,144	23.0
Mar-May 2010	28,969	58.2	2,475	7.9	18,307	36.8	28,170	70.5	2,454	8.0	9,340	23.4
Jun-Aug 2010	29,149	58.5	2,453	7.8	18,247	36.6	28,303	70.7	2,434	7.9	9,279	23.2
Sep-Nov 2010	29,092	58.3	2,495	7.9	18,353	36.7	28,221	70.4	2,474	8.1	9,364	23.4
Dec-Feb 2011	29,229	58.4	2,478	7.8	18,326	36.6	28,346	70.7	2,461	8.0	9,297	23.2
Mar-May 2011	29,279	58.4	2,452	7.7	18,395	36.7	28,384	70.7	2,434	7.9	9,329	23.2
Change on quarter	50	0.0	-26	-0.1	68	0.1	38	0.0	-26	-0.1	32	0.1
Change %	0.2		-1.0		0.4		0.1		-1.1		0.3	
Change on year	309	0.2	-23	-0.1	88	-0.1	214	0.2	-20	-0.1	-11	-0.1
Change %	1.1		-0.9		0.5		0.8		-0.8		-0.1	
Men	MGSA	MGSS	MGSD	MGSY	MGSJ	YBTD	YBSF	MGSV	YBSI	YBTJ	YBSO	YBTM
Mar-May 2009	15,543	64.6	1,454	8.6	7,065	29.4	15,101	76.4	1,442	8.7	3,235	16.4
Mar-May 2010	15,483	63.8	1,492	8.8	7,299	30.1	15,014	75.5	1,475	8.9	3,402	17.1
Jun-Aug 2010	15,614	64.2	1,439	8.4	7,274	29.9	15,108	75.8	1,424	8.6	3,386	17.0
Sep-Nov 2010	15,605	64.0	1,474	8.6	7,298	29.9	15,083	75.6	1,459	8.8	3,400	17.1
Dec-Feb 2011	15,663	64.1	1,442	8.4	7,323	30.0	15,147	75.9	1,430	8.6	3,389	17.0
Mar-May 2011	15,713	64.2	1,427	8.3	7,340	30.0	15,180	75.9	1,414	8.5	3,396	17.0
Change on quarter	49	0.1	-15	-0.1	17	0.0	33	0.1	-16	-0.1	7	0.0
Change %	0.3		-1.1		0.2		0.2		-1.1		0.2	
Change on year	230	0.4	-65	-0.5	41	-0.1	166	0.5	-61	-0.4	-6	-0.1
Change %	1.5		-4.4		0.6		1.1		-4.2		-0.2	
Women	MGSB	MGST	MGSE	MGSZ	MGSK	YBTE	LF2H	LF25	LF2J	LF2R	LF2N	LF2T
Mar-May 2009	13,427	53.1	923	6.4	10,954	43.3	13,145	65.8	917	6.5	5,909	29.6
Mar-May 2010	13,487	52.9	984	6.8	11,008	43.2	13,156	65.5	979	6.9	5,938	29.6
Jun-Aug 2010	13,535	53.0	1,014	7.0	10,974	43.0	13,196	65.7	1,009	7.1	5,893	29.3
Sep-Nov 2010	13,487	52.8	1,021	7.0	11,055	43.2	13,137	65.3	1,016	7.2	5,964	29.6
Dec-Feb 2011	13,566	53.0	1,036	7.1	11,003	43.0	13,198	65.5	1,031	7.2	5,908	29.3
Mar-May 2011	13,566	52.9	1,026	7.0	11,054	43.1	13,204	65.5	1,021	7.2	5,933	29.4
Change on quarter	1	-0.1	-10	-0.1	51	0.1	5	0.0	-10	-0.1	25	0.1
Change %	0.0		-1.0		0.5		0.0		-1.0		0.4	
Change on year	80	0.0	42	0.2	46	-0.1	48	0.0	42	0.2	-5	-0.1
Change %	0.6		4.2		0.4		0.4		4.3		-0.1	
	Aged 16-17						Aged 18-24					
	Employment		Unemployment		Inactivity		Employment		Unemployment		Inactivity	
	Level	Rate	Level	Rate	Level	Rate	Level	Rate	Level	Rate	Level	Rate
People	YBTO	YBUA	YBVH	YBVK	YCAS	LWEX	YBTR	YBUD	YBVN	YBVQ	YCAV	LWFA
Mar-May 2009	449	28.8	200	30.8	911	58.4	3,440	59.7	731	17.5	1,594	27.7
Mar-May 2010	389	25.6	217	35.8	914	60.1	3,404	58.5	718	17.4	1,700	29.2
Jun-Aug 2010	389	25.8	178	31.3	944	62.5	3,433	58.9	744	17.8	1,655	28.4
Sep-Nov 2010	354	23.5	205	36.7	945	62.8	3,368	57.8	745	18.1	1,719	29.5
Dec-Feb 2011	355	23.7	218	38.0	924	61.7	3,390	58.1	742	17.9	1,701	29.2
Mar-May 2011	355	23.8	202	36.3	933	62.6	3,394	58.2	715	17.4	1,724	29.6
Change on quarter	0	0.1	-16	-1.7	9	0.9	4	0.1	-26	-0.5	23	0.4
Change %	-0.1		-7.2		0.9		0.1		-3.6		1.3	
Change on year	-34	-1.8	-15	0.5	19	2.5	-10	-0.3	-3	0.0	24	0.3
Change %	-8.8		-6.8		2.0		-0.3		-0.4		1.4	
Men	YBTP	YBUB	YBVI	YBVL	YCAT	LWEY	YBTS	YBUE	YBVO	YBVR	YCAW	LWFB
Mar-May 2009	215	26.9	110	33.7	474	59.4	1,796	61.3	451	20.1	682	23.3
Mar-May 2010	175	22.5	122	41.2	480	61.7	1,775	60.0	435	19.7	748	25.3
Jun-Aug 2010	181	23.4	94	34.2	498	64.4	1,793	60.5	438	19.6	731	24.7
Sep-Nov 2010	162	21.1	108	39.9	500	64.9	1,794	60.6	440	19.7	728	24.6
Dec-Feb 2011	157	20.5	114	42.0	495	64.6	1,788	60.3	435	19.6	740	25.0
Mar-May 2011	161	21.1	107	39.8	495	64.9	1,789	60.4	433	19.5	741	25.0
Change on quarter	4	0.6	-7	-2.2	0	0.3	1	0.0	-2	-0.1	1	0.0
Change %	2.5		-6.4		-0.1		0.1		-0.5		0.2	
Change on year	-14	-1.4	-16	-1.3	15	3.2	14	0.3	-1	-0.2	-6	-0.3
Change %	-8.1		-13.0		3.1		0.8		-0.3		-0.8	
Women	YBTQ	YBUC	YBVJ	YBVM	YCAU	LWEZ	YBTT	YBUF	YBVP	YBVS	YCAC	LWFC
Mar-May 2009	234	30.7	90	27.9	437	57.4	1,644	58.0	279	14.5	912	32.2
Mar-May 2010	214	28.8	94	30.6	434	58.5	1,629	56.9	283	14.8	952	33.2
Jun-Aug 2010	209	28.3	84	28.6	446	60.4	1,640	57.1	306	15.7	924	32.2
Sep-Nov 2010	192	26.1	97	33.6	445	60.6	1,574	54.8	304	16.2	991	34.6
Dec-Feb 2011	198	27.1	104	34.4	429	58.7	1,602	55.8	306	16.0	961	33.5
Mar-May 2011	194	26.7	96	33.0	438	60.2	1,605	55.9	282	14.9	982	34.2
Change on quarter	-4	-0.4	-8	-1.4	9	1.5	3	0.1	-24	-1.1	21	0.8
Change %	-2.1		-8.0		2.1		0.2		-7.9		2.2	
Change on year	-20	-2.2	1	2.4	4	1.7	-24	-0.9	-1	0.1	30	1.0
Change %	-9.3		1.2		0.9		-1.5		-0.4		3.1	

SUMMARY

2(2) Labour market status by age group

United Kingdom (thousands) seasonally adjusted

	Aged 25-34						Aged 35-49					
	Employment		Unemployment		Inactivity		Employment		Unemployment		Inactivity	
	Level	Rate	Level	Rate	Level	Rate	Level	Rate	Level	Rate	Level	Rate
People	YBTU	YBUG	YCGM	YCGP	YCAV	LWFD	YBTX	YBUJ	YCGS	YCGV	YCBB	LWFG
Mar-May 2009	6,179	78.2	500	7.5	1,219	15.4	10,929	81.5	589	5.1	1,885	14.1
Mar-May 2010	6,296	78.0	533	7.8	1,246	15.4	10,803	81.0	625	5.5	1,906	14.3
Jun-Aug 2010	6,389	78.6	510	7.4	1,225	15.1	10,788	81.0	635	5.6	1,889	14.2
Sep-Nov 2010	6,442	78.8	525	7.5	1,205	14.7	10,756	81.0	636	5.6	1,891	14.2
Dec-Feb 2011	6,487	78.9	513	7.3	1,220	14.8	10,752	81.1	617	5.4	1,883	14.2
Mar-May 2011	6,516	78.8	540	7.7	1,212	14.7	10,731	81.2	604	5.3	1,888	14.3
Change on quarter	29	-0.1	28	0.3	-8	-0.2	-21	0.0	-13	-0.1	4	0.1
Change %	0.4		5.4		-0.7		-0.2		-2.1		0.2	
Change on year	220	0.8	8	-0.1	-34	-0.8	-72	0.1	-21	-0.1	-18	0.0
Change %	3.5		1.5		-2.8		-0.7		-3.4		-0.9	
Men	YBTU	YBUH	YCGN	YCGQ	YCAZ	LWFE	YBTY	YBUK	YCGT	YCGW	YCBC	LWFH
Mar-May 2009	3,387	85.2	305	8.3	285	7.2	5,768	87.2	333	5.5	510	7.7
Mar-May 2010	3,448	84.6	323	8.6	303	7.4	5,684	86.4	346	5.7	551	8.4
Jun-Aug 2010	3,530	86.1	294	7.7	277	6.7	5,664	86.2	354	5.9	553	8.4
Sep-Nov 2010	3,540	85.8	300	7.8	286	6.9	5,659	86.3	361	6.0	537	8.2
Dec-Feb 2011	3,565	85.9	288	7.5	299	7.2	5,679	86.8	342	5.7	522	8.0
Mar-May 2011	3,573	85.5	300	7.7	305	7.3	5,691	87.1	325	5.4	515	7.9
Change on quarter	8	-0.3	12	0.3	6	0.1	12	0.4	-18	-0.3	-8	-0.1
Change %	0.2		4.0		2.1		0.2		-5.2		-1.5	
Change on year	124	0.9	-24	-0.8	2	-0.1	7	0.8	-21	-0.3	-36	-0.5
Change %	3.6		-7.3		0.5		0.1		-6.1		-6.5	
Women	YBTW	YBUI	YCGO	YCGR	YCBA	LWFF	YBTZ	YBUL	YCGU	YCGX	YCBD	LWFI
Mar-May 2009	2,792	71.2	195	6.5	933	23.8	5,161	76.0	256	4.7	1,374	20.2
Mar-May 2010	2,848	71.2	210	6.9	943	23.6	5,119	75.8	280	5.2	1,355	20.1
Jun-Aug 2010	2,858	71.1	216	7.0	948	23.6	5,124	76.0	281	5.2	1,336	19.8
Sep-Nov 2010	2,902	71.7	225	7.2	918	22.7	5,097	75.8	275	5.1	1,354	20.1
Dec-Feb 2011	2,922	71.8	225	7.2	921	22.6	5,073	75.6	275	5.1	1,361	20.3
Mar-May 2011	2,943	71.9	241	7.6	907	22.2	5,040	75.3	280	5.3	1,373	20.5
Change on quarter	21	0.1	16	0.4	-14	-0.5	-33	-0.3	5	0.1	12	0.2
Change %	0.7		7.1		-1.6		-0.6		1.7		0.9	
Change on year	95	0.7	31	0.7	-36	-1.4	-79	-0.5	0	0.1	18	0.5
Change %	3.3		14.9		-3.8		-1.5		0.0		1.3	
	Aged 50-64						Age 65+					
	Employment		Unemployment		Inactivity		Employment		Unemployment		Inactivity	
	Level	Rate	Level	Rate	Level	Rate	Level	Rate	Level	Rate	Level	Rate
People	LF26	LF2U	LF28	LF2E	LF2A	LF2W	LFK4	LFK6	K5HU	K5HW	LFL4	LFL6
Mar-May 2009	7,249	65.2	339	4.5	3,536	31.8	724	7.5	18	2.4	8,875	92.3
Mar-May 2010	7,278	64.9	361	4.7	3,574	31.9	800	8.2	21	2.6	8,967	91.6
Jun-Aug 2010	7,304	65.0	367	4.8	3,567	31.7	845	8.6	19	2.3	8,968	91.2
Sep-Nov 2010	7,301	64.8	364	4.8	3,605	32.0	872	8.8	21	2.4	8,989	91.0
Dec-Feb 2011	7,362	65.1	371	4.8	3,569	31.6	884	8.9	17	1.9	9,030	90.9
Mar-May 2011	7,388	65.2	372	4.8	3,573	31.5	895	9.0	18	2.0	9,066	90.8
Change on quarter	26	0.0	1	0.0	5	0.0	12	0.1	1	0.1	36	-0.1
Change %	0.4		0.3		0.1		1.3		4.5		0.4	
Change on year	111	0.3	11	0.1	-1	-0.3	95	0.8	-4	-0.7	99	-0.8
Change %	1.5		3.1		0.0		11.9		-16.5		1.1	
Men	MGUX	YBUN	MGVM	MGXF	MGWB	LWFK	MGVA	YBUQ	MGVP	MGXI	MGWE	LWFN
Mar-May 2009	3,935	72.1	243	5.8	1,283	23.5	442	10.3	11	2.5	3,830	89.4
Mar-May 2010	3,931	71.5	249	6.0	1,321	24.0	469	10.7	16	3.4	3,897	88.9
Jun-Aug 2010	3,940	71.5	244	5.8	1,328	24.1	506	11.5	14	2.7	3,887	88.2
Sep-Nov 2010	3,927	71.1	250	6.0	1,349	24.4	522	11.8	16	2.9	3,898	87.9
Dec-Feb 2011	3,958	71.4	250	5.9	1,332	24.0	516	11.6	12	2.3	3,934	88.2
Mar-May 2011	3,966	71.4	250	5.9	1,340	24.1	533	11.9	13	2.4	3,945	87.8
Change on quarter	8	0.0	-1	0.0	8	0.1	17	0.3	1	0.0	10	-0.3
Change %	0.2		-0.2		0.6		3.2		5.4		0.3	
Change on year	35	-0.1	1	0.0	19	0.1	64	1.2	-4	-1.0	48	-1.1
Change %	0.9		0.2		1.5		13.6		-21.5		1.2	
Women	LF27	LF2V	LF29	LF2F	LF2B	LF2X	LFK5	LFK7	K5HV	K5HX	LFL5	LFL7
Mar-May 2009	3,313	58.5	96	2.8	2,253	39.8	283	5.3	*	*	5,046	94.6
Mar-May 2010	3,346	58.6	112	3.2	2,254	39.5	331	6.1	*	*	5,070	93.8
Jun-Aug 2010	3,365	58.8	123	3.5	2,239	39.1	339	6.2	*	*	5,081	93.7
Sep-Nov 2010	3,373	58.7	115	3.3	2,255	39.3	350	6.4	*	*	5,091	93.5
Dec-Feb 2011	3,404	59.1	121	3.4	2,236	38.8	367	6.7	*	*	5,095	93.2
Mar-May 2011	3,422	59.2	123	3.5	2,233	38.6	362	6.6	*	*	5,121	93.3
Change on quarter	19	0.1	2	0.0	-3	-0.2	-5	-0.1	*	*	26	0.1
Change %	0.5		1.5		-0.1		-1.3		*	*	0.5	
Change on year	76	0.6	11	0.2	-20	-0.8	32	0.5	*	*	51	-0.5
Change %	2.3		9.5		-0.9		9.5		*	*	1.0	

Source: Labour Force Survey

Labour market statistics enquiries: labour.market@ons.gov.uk

EMPLOYMENT AND JOBS

3 Full-time, part-time & temporary workers

United Kingdom (thousands of people aged 16 and over), seasonally adjusted

	All in employment					Full-time and part-time workers ¹						
	Total	Employees	Self employed	Unpaid family workers	Government supported training & employment programmes	Total people working full-time	Total people working part-time	Employees working full-time	Employees working part-time	Self-employed people working full-time	Self-employed people working part-time	Total workers with second jobs
People	MGRZ	MGRN	MGRQ	MGRT	MGRW	YCBE	YCBH	YCBK	YCBN	YCBQ	YCBT	YCBW
Mar-May 2009	28,970	24,940	3,831	98	101	21,432	7,539	18,512	6,429	2,871	960	1,137
Mar-May 2010	28,969	24,818	3,933	89	129	21,140	7,829	18,176	6,643	2,912	1,021	1,130
Jun-Aug 2010	29,149	24,942	3,964	110	132	21,194	7,954	18,194	6,748	2,939	1,025	1,111
Sep-Nov 2010	29,092	24,883	3,981	97	131	21,162	7,931	18,175	6,708	2,930	1,051	1,112
Dec-Feb 2011	29,229	25,012	3,996	95	126	21,301	7,928	18,361	6,652	2,895	1,101	1,172
Mar-May 2011	29,279	25,092	3,998	86	103	21,320	7,959	18,409	6,684	2,874	1,123	1,141
Change on quarter	50	80	2	-9	-23	19	31	48	32	-21	22	-30
Change %	0.2	0.3	0.0	-9.6	-18.0	0.1	0.4	0.3	0.5	-0.7	2.0	-2.6
Change on year	309	274	64	-2	-26	180	129	233	41	-38	102	12
Change %	1.1	1.1	1.6	-2.5	-20.4	0.9	1.7	1.3	0.6	-1.3	10.0	1.0
Men	MGSA	MGRO	MGRR	MGRU	MGRX	YCBF	YCBI	YCBL	YCBO	YCBR	YCBU	YCBX
Mar-May 2009	15,543	12,694	2,757	36	57	13,669	1,874	11,286	1,408	2,353	404	488
Mar-May 2010	15,483	12,594	2,771	41	77	13,525	1,957	11,143	1,451	2,351	420	476
Jun-Aug 2010	15,614	12,668	2,819	45	83	13,582	2,032	11,164	1,504	2,379	440	459
Sep-Nov 2010	15,605	12,674	2,814	35	83	13,558	2,047	11,167	1,507	2,359	455	463
Dec-Feb 2011	15,663	12,755	2,800	31	77	13,653	2,011	11,294	1,461	2,333	467	506
Mar-May 2011	15,713	12,805	2,817	31	60	13,660	2,052	11,319	1,486	2,324	492	486
Change on quarter	49	50	16	0	-17	8	41	25	25	-9	25	-20
Change %	0.3	0.4	0.6	-1.3	-21.7	0.1	2.1	0.2	1.7	-0.4	5.4	-3.9
Change on year	230	211	46	-10	-17	135	95	177	35	-27	72	11
Change %	1.5	1.7	1.6	-24.8	-21.7	1.0	4.8	1.6	2.4	-1.1	17.2	2.2
Women	MGSB	MGRP	MGRS	MGRV	MGRY	YCBG	YCBJ	YCBM	YCBP	YCBS	YCBV	YCBY
Mar-May 2009	13,427	12,247	1,074	62	45	7,763	5,664	7,226	5,021	518	556	650
Mar-May 2010	13,487	12,224	1,162	48	52	7,615	5,872	7,033	5,191	561	601	654
Jun-Aug 2010	13,535	12,274	1,145	66	50	7,612	5,923	7,030	5,245	560	585	652
Sep-Nov 2010	13,487	12,209	1,167	63	49	7,604	5,884	7,008	5,201	571	596	649
Dec-Feb 2011	13,566	12,257	1,196	64	49	7,649	5,917	7,066	5,191	562	634	666
Mar-May 2011	13,566	12,287	1,181	56	43	7,660	5,907	7,089	5,198	550	631	655
Change on quarter	1	30	-15	-9	-6	11	-11	23	7	-12	-3	-11
Change %	0.0	0.2	-1.2	-13.6	-12.2	0.1	-0.2	0.3	0.1	-2.1	-0.4	-1.6
Change on year	80	63	19	8	-10	45	35	56	6	-11	30	1
Change %	0.6	0.5	1.6	16.6	-18.4	0.6	0.6	0.8	0.1	-2.0	5.0	0.2

	Temporary employees (reasons for temporary working)							Part-time workers (reasons for working part-time) ²					
	Total	Total as % of all employees	Could not find permanent job	% that could not find permanent job	Did not want permanent job	Had a contract with period of training	Some other reason	Total ³	Could not find full-time job	% that could not find full-time job	Did not want full-time job	Ill or disabled	Student or at school
	13	14	15	16	17	18	19	20	21	22	23	24	25
People	YCBZ	YCC6	YCC7	YCC1	YCC2	YCCO	YCCR	YCCU	YCCX	YCCD	YCCD	YCCD	YCDJ
Mar-May 2009	1,407	5.6	417	29.6	388	90	513	7,389	935	12.7	5,132	193	1,088
Mar-May 2010	1,542	6.2	553	35.9	380	77	532	7,664	1,073	14.0	5,236	171	1,143
Jun-Aug 2010	1,563	6.3	588	37.6	360	87	529	7,773	1,134	14.6	5,246	165	1,182
Sep-Nov 2010	1,568	6.3	587	37.4	354	94	533	7,756	1,162	15.0	5,290	171	1,082
Dec-Feb 2011	1,565	6.3	571	36.5	350	96	548	7,755	1,174	15.1	5,302	173	1,051
Mar-May 2011	1,601	6.4	581	36.3	367	90	564	7,808	1,254	16.1	5,266	186	1,050
Change on quarter	36	0.1	10	-0.2	16	-6	16	53	80	0.9	-36	13	-1
Change %	2.3	1.8	1.8	4.7	-6.6	2.9	0.7	6.8	-0.7	7.3	-0.1	-0.1	-0.1
Change on year	59	0.2	28	0.4	-13	13	31	144	181	2.1	29	15	-94
Change %	3.9	5.1	3.7	-3.4	17.2	5.9	1.9	16.8	0.6	8.5	-8.2	-8.2	-8.2
Men	YCCA	YCCD	YCCG	YCCJ	YCCM	YCCP	YCCS	YCCV	YCCY	YCCB	YCCD	YCCD	YCDK
Mar-May 2009	658	5.2	223	33.8	156	47	233	1,812	427	23.6	806	83	477
Mar-May 2010	741	5.9	295	39.9	160	38	247	1,871	464	24.8	827	66	504
Jun-Aug 2010	760	6.0	314	41.4	155	44	246	1,943	493	25.4	846	75	515
Sep-Nov 2010	745	5.9	303	40.7	150	53	239	1,962	515	26.3	872	76	483
Dec-Feb 2011	741	5.8	297	40.1	146	54	245	1,929	513	26.6	865	76	456
Mar-May 2011	772	6.0	314	40.7	150	47	260	1,979	557	28.1	879	80	443
Change on quarter	30	0.2	17	0.6	4	-6	15	50	44	1.6	14	4	-13
Change %	4.1	5.7	5.7	3.1	-11.7	6.2	2.6	8.6	6.6	1.7	5.6	-2.9	-2.9
Change on year	31	0.1	19	0.8	-10	9	13	107	93	3.3	52	13	-61
Change %	4.2	6.3	6.3	-6.1	23.9	5.3	5.7	19.9	6.3	20.1	-12.0	-12.0	-12.0
Women	YCCB	YCCD	YCCG	YCCJ	YCCM	YCCP	YCCS	YCCV	YCCY	YCCB	YCCD	YCCD	YCDL
Mar-May 2009	749	6.1	194	25.9	232	43	280	5,577	508	9.1	4,326	110	612
Mar-May 2010	801	6.6	257	32.1	220	39	286	5,793	609	10.5	4,409	105	639
Jun-Aug 2010	803	6.5	273	34.0	204	42	283	5,830	641	11.0	4,400	90	667
Sep-Nov 2010	823	6.7	283	34.4	204	41	295	5,794	647	11.2	4,418	95	598
Dec-Feb 2011	824	6.7	274	33.2	205	43	303	5,826	661	11.4	4,437	97	594
Mar-May 2011	830	6.8	267	32.2	216	43	304	5,830	697	12.0	4,386	106	606
Change on quarter	6	0.0	-7	-1.0	12	0	1	4	36	0.6	-51	8	12
Change %	0.7	-2.5	-2.5	5.8	-0.2	0.2	0.1	5.4	-1.1	8.6	2.0	2.0	2.0
Change on year	28	0.2	9	0.0	-3	4	18	37	88	1.4	-23	1	-33
Change %	3.5	3.7	3.7	-1.5	10.6	6.3	0.6	14.5	-0.5	1.2	-5.2	-5.2	-5.2

Relationship between columns: 1= 2+3+4+5; 1=6+7; 2=8+9; 3=10+11; 13=15+17+18+19; 20=9+11; 14=13/2; 16=15/13; 22=21/20

Source: Labour Force Survey

Labour market statistics enquiries: labour.market@ons.gov.uk

1. The split between full-time and part-time employment is based on respondents' self-classification.

2. These series cover Employees and Self-employed only. These series include some temporary employees recorded in columns 13 to 19.

3. The total includes those who did not give a reason for working part-time and it therefore does not equal the sum of columns 21, 23, 24 and 25.

EMPLOYMENT AND JOBS

4 Public and private sector employment

United Kingdom (thousands of people aged 16 and over), seasonally adjusted

	Public sector ¹		Private sector ²		Total employment ³
	(000s)	(%)	(000s)	(%)	(000s)
	1	2	3	4	5
	G7AU	G9BZ	G7K5	G9C2	G7GO
Mar 09	6288	21.6	22790	78.4	29078
Jun 09	6288	21.8	22543	78.2	28831
Sep 09	6319	21.9	22573	78.1	28892
Dec 09	6327	21.9	22515	78.1	28842
Mar 10	6305	21.8	22557	78.2	28862
Jun 10	6276	21.5	22869	78.5	29145
Sep 10	6240	21.4	22881	78.6	29121
Dec 10	6186	21.2	22973	78.8	29159
Mar 11	6162	21.1	23077	78.9	29239
Change on quarter	-24	-0.1	104	0.1	80
Change %	-0.4		0.5		0.3
Change on year	-143	-0.7	520	0.7	376
Change %	-2.3		2.3		1.3

Enquiries 01633 456756

Source: Labour Force Survey (LFS) and returns from public sector organisations

Relationship between columns: 2 = 1/5*100; 3 = 5-1; 4 = 3/5*100

See footnotes under table 4(2)

4(1) Public sector employment by industry

United Kingdom (thousands of people aged 16 and over), seasonally adjusted

	Construction	HM Forces ⁴	Police (including civilians)	Public administration	Of which: Civil Service ⁵	Education	National Health Service	Other health and social work	Other (including financial corporations) ¹	Total public sector employment ^{1 6}
	1	2	3	4	5	6	7	8	9	10
	G7ER	G7EU	G7EX	G7F2	G7D6	G7F5	G7FG	G7FJ	G7FM	G7AU
Mar 09	50	195	293	1218	525	1635	1554	379	962	6288
Jun 09	50	197	294	1220	527	1633	1572	374	949	6288
Sep 09	47	200	296	1230	534	1631	1598	387	930	6319
Dec 09	48	198	295	1225	533	1652	1614	383	913	6327
Mar 10	47	198	295	1223	528	1648	1605	379	904	6305
Jun 10	46	197	292	1212	522	1660	1599	377	893	6276
Sep 10	46	196	290	1191	514	1652	1597	377	888	6240
Dec 10	44	195	288	1186	506	1636	1596	373	874	6186
Mar 11	43	193	286	1176	513	1624	1595	371	871	6162
Change on quarter	-1	-2	-2	-10	7	-12	-1	-2	-3	-24
Change %	-2.3	-1.0	-0.7	-0.8	1.4	-0.7	-0.1	-0.5	-0.3	-0.4
Change on year	-4	-5	-9	-47	-15	-24	-10	-8	-33	-143
Change %	-8.5	-2.5	-3.1	-3.8	-2.8	-1.5	-0.6	-2.1	-3.7	-2.3

Enquiries 01633 456756

Source: returns from public sector organisations

See footnotes under table 4(2)

4(2) Public sector employment including and excluding financial corporations

United Kingdom (thousands of people aged 16 and over), seasonally adjusted

	Public sector excluding financial corporations	Publicly owned financial corporations ⁷	Total public sector employment ¹
	K8PE	K8PD	G7AU
Mar 09	6047	241	6288
Jun 09	6056	232	6288
Sep 09	6089	230	6319
Dec 09	6103	224	6327
Mar 10	6087	218	6305
Jun 10	6057	219	6276
Sep 10	6019	221	6240
Dec 10	5973	213	6186
Mar 11	5952	210	6162
Change on quarter	-21	-3	-24
Change %	-0.4	-1.4	-0.4
Change on year	-135	-8	-143
Change %	-2.2	-3.7	-2.3

Enquiries 01633 456756

Source: returns from public sector organisations

1. This series includes publicly owned financial corporations. Royal Bank of Scotland Group plc and Lloyds Banking Group plc are classified to the public sector from 13 October 2008. They are therefore included in the public sector estimates from December 2008 onwards but not for earlier periods.

2. Estimated as the difference between LFS total employment and the data from public sector organisations.

3. LFS employment data for March refer to February-April, June refers to May-July, September refers to August-October and December refers to November-January.

4. This series excludes locally engaged staff stationed outside the United Kingdom.

5. This series excludes the Northern Ireland Civil Service.

6. This series does not exactly equal the sum of columns 1 to 4 and 6 to 9 because each series is independently seasonally adjusted.

7. This series includes publicly owned financial corporations, excluding insurance and pension funding, as defined by Section 64 of Standard Industrial Classification 2007.

More detailed estimates are available in the Public Sector Employment Statistical Bulletin at:

<http://www.statistics.gov.uk/StatBase/Product.asp?vlnk=13615>

EMPLOYMENT AND JOBS

5 Workforce jobs

United Kingdom (thousands), seasonally adjusted

	Workforce jobs 1	Employee jobs 2	Self-employment jobs ¹ 3	HM Forces 4	Government-supported trainees ¹ 5
	DYDC	BCAJ	DYZN	LOJX	LOJU
Mar 09	31,696	27,247	4,208	196	45
Jun 09	31,466	27,048	4,176	197	46
Sep 09	31,341	26,876	4,218	199	47
Dec 09	31,240	26,776	4,218	198	47
Mar 10	31,242	26,689	4,305	199	49
Jun 10	31,201	26,615	4,341	198	47
Sep 10	31,182	26,605	4,338	197	43
Dec 10	31,233	26,618	4,377	195	44
Mar 11	31,354	26,780	4,349	193	32
<i>Change on quarter</i>	121	162	-28	-1	-12
<i>Change %</i>	0.4	0.6	-0.6	-0.6	-26.7
<i>Change on year</i>	113	91	44	-6	-17
<i>Change %</i>	0.4	0.3	1.0	-2.8	-34.8

Relationship between columns: 1=2+3+4+5

See footnotes under table 6

6 Workforce jobs by industry

Standard Industrial Classification (2007)

United Kingdom (thousands), seasonally adjusted

SIC 2007 sections	All jobs A-S	Agriculture, forestry & fishing A	Mining & quarrying B	Manufacturing C	Electricity, gas, steam & air conditioning supply D	Water supply, sewerage, waste & remediation activities E	Construction F	Wholesale & retail trade; repair of motor vehicles and motor cycles G	Transport & storage H	Accommodation & food service activities I	Information & communication J
	DYDC	JWR5	JWR6	JWR7	JWR8	JWR9	JWS2	JWS3	JWS4	JWS5	JWS6
Mar 09	31,696	405	67	2,686	105	177	2,326	4,897	1,531	1,961	1,187
Jun 09	31,466	405	62	2,640	112	165	2,240	4,871	1,518	1,960	1,175
Sep 09	31,341	418	63	2,618	123	164	2,168	4,814	1,519	1,939	1,155
Dec 09	31,240	402	62	2,609	120	161	2,180	4,760	1,497	1,916	1,161
Mar 10	31,242	429	63	2,570	138	158	2,110	4,751	1,459	1,889	1,131
Jun 10	31,201	463	60	2,557	143	158	2,158	4,755	1,477	1,904	1,114
Sep 10	31,182	460	62	2,535	132	153	2,137	4,759	1,472	1,927	1,124
Dec 10	31,233	473	62	2,554	135	159	2,129	4,791	1,457	1,898	1,137
Mar 11	31,354	437	60	2,543	146	167	2,105	4,816	1,486	1,899	1,187
<i>Change on quarter</i>	121	-36	-2	-11	12	8	-24	25	30	0	50
<i>Change %</i>	0.4	-7.6	-3.8	-0.5	8.7	5.3	-1.1	0.5	2.0	0.0	4.4
<i>Change on year</i>	113	8	-4	-27	8	9	-5	65	27	10	56
<i>Change %</i>	0.4	1.8	-5.7	-1.1	5.8	5.6	-0.2	1.4	1.9	0.5	4.9
SIC 2007 sections	Financial & insurance activities K	Real estate activities L	Professional scientific & technical activities M	Administrative & support service activities N	Public admin & defence; compulsory social security ² O	Education P	Human health & social work activities Q	Arts, entertainment & recreation R	Other service activities S	Total services G-S	
	JWS7	JWS8	JWS9	JWT2	JWT3	JWT4	JWT5	JWT6	JWT7	JWT8	
Mar 09	1,193	449	2,330	2,370	1,760	2,711	3,844	850	848	25,930	
Jun 09	1,180	454	2,315	2,319	1,769	2,712	3,887	844	839	25,843	
Sep 09	1,136	456	2,341	2,285	1,779	2,718	3,956	834	851	25,785	
Dec 09	1,133	445	2,346	2,298	1,776	2,735	3,967	818	852	25,705	
Mar 10	1,095	457	2,427	2,366	1,778	2,720	4,016	848	836	25,773	
Jun 10	1,125	452	2,356	2,320	1,757	2,719	4,027	850	806	25,662	
Sep 10	1,135	443	2,350	2,322	1,735	2,715	4,060	868	791	25,701	
Dec 10	1,136	416	2,362	2,343	1,720	2,672	4,102	869	818	25,721	
Mar 11	1,146	440	2,393	2,342	1,705	2,686	4,084	877	835	25,896	
<i>Change on quarter</i>	10	23	31	-1	-15	15	-18	9	16	175	
<i>Change %</i>	0.9	5.6	1.3	-0.1	-0.8	0.5	-0.4	1.0	2.0	0.7	
<i>Change on year</i>	51	-17	-34	-24	-73	-34	68	29	-1	123	
<i>Change %</i>	4.7	-3.7	-1.4	-1.0	-4.1	-1.2	1.7	3.4	-0.1	0.5	

Workforce jobs enquiries 01633 456776

Sources: Employer surveys, Labour Force Survey and administrative sources

1. Workforce Jobs figures are a measure of jobs rather than people. For this reason estimates of self-employment jobs and government supported trainee jobs differ from estimates of people in self-employment and in government supported training and employment programmes shown at Table 3 of this Statistical Bulletin.
2. This series is not exclusively a public sector series as it includes some private sector jobs. See table 4 of this Statistical Bulletin for estimates of public and private sector employment.

EMPLOYMENT AND JOBS

7 Actual weekly hours worked

United Kingdom (hours worked by people aged 16 and over), seasonally adjusted

	Average (mean) actual weekly hours worked				
	Total weekly hours (millions) ^{1,2}	All workers ¹	Full-time workers ³	Part-time workers ³	Second Jobs
People	YBUS	YBUV	YBUY	YBVB	YBVE
Mar-May 2009	917.7	31.7	36.9	15.5	9.5
Mar-May 2010	911.8	31.5	36.9	15.6	9.6
Jun-Aug 2010	919.7	31.6	37.0	15.7	9.6
Sep-Nov 2010	914.7	31.5	37.0	15.6	9.6
Dec-Feb 2011	929.6	31.9	37.5	15.6	9.6
Mar-May 2011	911.0	31.2	36.6	15.5	9.6
<i>Change on quarter</i>	-18.6	-0.7	-0.9	-0.1	0.0
<i>Change %</i>	-2.0	-2.2	-2.4	-0.6	-0.4
<i>Change on year</i>	-0.8	-0.4	-0.4	-0.1	0.0
<i>Change %</i>	-0.1	-1.1	-1.0	-0.3	-0.3
Men	YBUT	YBUW	YBUZ	YBVC	YBVF
Mar-May 2009	560.6	36.1	38.6	15.2	10.6
Mar-May 2010	558.0	36.1	38.7	15.7	10.8
Jun-Aug 2010	563.9	36.2	38.8	15.6	11.1
Sep-Nov 2010	563.6	36.2	38.9	15.5	11.1
Dec-Feb 2011	573.2	36.7	39.4	15.4	10.9
Mar-May 2011	559.7	35.7	38.4	15.2	10.7
<i>Change on quarter</i>	-13.5	-1.0	-1.0	-0.2	-0.2
<i>Change %</i>	-2.4	-2.7	-2.5	-1.6	-2.2
<i>Change on year</i>	1.7	-0.4	-0.3	-0.6	-0.1
<i>Change %</i>	0.3	-1.2	-0.7	-3.5	-0.7
Women	YBUU	YBUX	YBVA	YBVD	YBVG
Mar-May 2009	357.1	26.6	33.9	15.6	8.8
Mar-May 2010	353.8	26.3	33.8	15.6	8.7
Jun-Aug 2010	355.8	26.3	33.7	15.7	8.6
Sep-Nov 2010	351.1	26.1	33.6	15.7	8.5
Dec-Feb 2011	356.4	26.3	34.1	15.7	8.6
Mar-May 2011	351.3	25.9	33.3	15.7	8.7
<i>Change on quarter</i>	-5.1	-0.4	-0.8	0.0	0.1
<i>Change %</i>	-1.4	-1.4	-2.2	-0.2	1.5
<i>Change on year</i>	-2.5	-0.3	-0.5	0.1	0.0
<i>Change %</i>	-0.7	-1.3	-1.5	0.8	-0.1

Source: Labour Force Survey

Labour market statistics enquiries: labour.market@ons.gov.uk

1. Main and second job.

2. Total actual weekly hours worked including paid and unpaid overtime.

3. Main job only. The split between full-time and part-time employment is based on respondents' self-classification.

7(1) Usual weekly hours of work¹

United Kingdom, seasonally adjusted

	All in Employment (%)			Employees (%)			Self-Employed (%)		
	People	Men	Women	People	Men	Women	People	Men	Women
Mar-May 2010									
Less than 6 Hours	1.5	0.8	2.3	1.2	0.6	1.7	3.0	1.5	6.8
6 up to 15 hours	7.1	3.6	11.1	6.9	3.5	10.5	7.9	4.0	17.1
16 up to 30 hours	19.3	9.3	30.8	19.2	8.1	30.7	19.8	14.3	33.0
31 up to 45 hours	52.8	58.6	46.1	55.1	62.0	47.9	38.8	43.7	27.1
Over 45 hours	19.3	27.6	9.7	17.6	25.8	9.2	30.5	36.6	16.0
Total (thousands)	28,969	15,483	13,487	24,818	12,594	12,224	3,933	2,771	1,162
Dec-Feb 2011									
Less than 6 Hours	1.6	1.0	2.4	1.3	0.8	1.8	3.4	1.8	7.2
6 up to 15 hours	6.8	3.4	10.6	6.4	3.1	9.9	8.5	4.8	17.4
16 up to 30 hours	19.9	9.7	31.7	19.8	8.4	31.6	20.8	15.6	32.9
31 up to 45 hours	52.4	58.2	45.6	54.8	61.7	47.7	37.2	42.1	25.7
Over 45 hours	19.3	27.6	9.7	17.7	26.0	9.0	30.1	35.7	16.8
Total (thousands)	29,229	15,663	13,566	25,012	12,755	12,257	3,996	2,800	1,196
Mar-May 2011									
Less than 6 Hours	1.7	1.0	2.4	1.3	0.8	1.8	3.5	1.9	7.3
6 up to 15 hours	6.7	3.5	10.4	6.3	3.1	9.7	8.9	5.1	17.8
16 up to 30 hours	19.9	9.7	31.8	19.9	8.4	31.8	20.2	15.2	31.9
31 up to 45 hours	52.6	58.4	45.9	55.0	61.9	47.8	38.2	43.1	26.5
Over 45 hours	19.0	27.4	9.4	17.5	25.9	8.8	29.3	34.6	16.5
Total (thousands)	29,279	15,713	13,566	25,092	12,805	12,287	3,998	2,817	1,181

1. Total usual weekly hours worked by people aged 16 and over in main job including paid and unpaid overtime.

Source: Labour Force Survey

Labour market statistics enquiries: labour.market@ons.gov.uk

EMPLOYMENT AND JOBS

8 Employment levels¹ by country of birth and nationality

United Kingdom (thousands of people aged 16 and over) not seasonally adjusted

By country of birth	Total ²	UK	Non UK	EU14 ³	EUA8 ⁴	USA	Africa excluding South Africa	South Africa	Australia and New Zealand	India	Pakistan and Bangladesh
	MGMT	JF6F	JF6G	JJR3	JJR5	JJR7	JJR9	JJS3	JJS5	JJS7	JJS9
Jan - Mar 2005	28,635	25,807	2,826	627	118	85	475	134	150	258	164
Jan - Mar 2006	28,863	25,759	3,101	635	255	101	509	135	128	316	192
Jan - Mar 2007	28,976	25,615	3,354	654	378	109	532	132	127	326	243
Jan - Mar 2008	29,417	25,729	3,686	697	510	102	555	154	133	328	236
Jan - Mar 2009	29,074	25,251	3,815	681	518	75	587	150	133	339	275
Apr - Jun 2009	28,809	25,063	3,741	673	518	91	551	150	131	337	269
Jul - Sep 2009	28,980	25,276	3,693	671	500	94	551	137	135	346	240
Oct - Dec 2009	28,975	25,236	3,732	662	478	101	543	145	142	371	247
Jan - Mar 2010	28,726	25,012	3,709	664	500	102	554	145	140	361	232
Apr - Jun 2010	28,918	25,053	3,860	692	554	105	560	148	133	399	238
Jul - Sep 2010	29,295	25,391	3,901	660	586	92	602	152	130	397	236
Oct - Dec 2010	29,194	25,278	3,911	639	619	92	590	162	118	370	249
Jan - Mar 2011	29,142	25,089	4,044	705	629	102	600	160	110	380	250
Change on year	416	77	334	41	129	0	45	15	-30	19	18
Change %	1.4	0.3	9.0	6.2	25.8	-0.2	8.2	10.5	-21.7	5.4	7.8
By nationality	MGMT	JF6H	JF6I	JJR4	JJR6	JJR8	JJS2	JJS4	JJS6	JJS8	JJT2
Jan - Mar 2005	28,635	27,001	1,633	515	105	75	179	73	116	110	54
Jan - Mar 2006	28,863	27,064	1,798	488	242	79	193	82	98	140	57
Jan - Mar 2007	28,976	26,947	2,025	525	371	84	200	70	103	166	84
Jan - Mar 2008	29,417	27,116	2,293	540	500	76	228	75	103	161	83
Jan - Mar 2009	29,074	26,713	2,354	549	499	55	218	77	100	161	103
Apr - Jun 2009	28,809	26,494	2,311	542	500	65	206	85	97	152	101
Jul - Sep 2009	28,980	26,702	2,272	537	482	72	206	77	98	148	83
Oct - Dec 2009	28,975	26,671	2,297	535	469	77	216	82	98	163	88
Jan - Mar 2010	28,726	26,459	2,262	527	490	81	213	69	95	166	81
Apr - Jun 2010	28,918	26,502	2,414	561	545	75	218	65	100	199	85
Jul - Sep 2010	29,295	26,881	2,412	538	576	70	232	67	89	190	80
Oct - Dec 2010	29,194	26,777	2,414	525	609	68	229	64	76	176	88
Jan - Mar 2011	29,142	26,636	2,501	590	614	74	216	66	63	189	81
Change on year	416	177	239	63	124	-8	3	-3	-32	23	0
Change %	1.4	0.7	10.5	11.9	25.3	-9.3	1.5	-3.7	-33.7	13.9	0.4

Source: Labour Force Survey

Labour market statistics enquiries: labour.market@ons.gov.uk

1. Those aged 16 and over.

2. This series is the not seasonally adjusted equivalent of the total employment series MGRZ appearing at Table 1 of this Statistical Bulletin. The series does not equal the sum of the "UK" and "Non-UK" series because the total includes people who did not state their country of birth or nationality.

3. Austria, Belgium, Denmark, Finland, France, Germany, Greece, Ireland, Italy, Luxembourg, Netherlands, Portugal, Spain and Sweden.

4. Czech Republic, Estonia, Hungary, Latvia, Lithuania, Poland, Slovak Republic, Slovenia.

8(1) Employment rates¹ by country of birth and nationality

United Kingdom not seasonally adjusted

By country of birth	Total ²	UK	Non UK	EU14 ³	EUA8 ⁴	USA	Africa excluding South Africa	South Africa	Australia and New Zealand	India	Pakistan and Bangladesh
	LF9D	LFM6	LFM7	LFM8	LFM9	LFN2	LFN3	LFN4	LFN5	LFN6	LFN7
Jan - Mar 2005	72.8	73.7	65.7	71.5	73.9	75.9	65.8	78.0	89.8	66.3	41.1
Jan - Mar 2006	72.6	73.5	66.4	73.0	82.6	74.1	65.0	79.2	82.9	69.8	44.0
Jan - Mar 2007	72.2	73.1	66.3	73.6	80.5	72.6	64.6	82.5	81.9	67.7	47.7
Jan - Mar 2008	72.7	73.4	68.3	74.7	82.6	74.3	66.1	85.8	85.2	67.5	44.7
Jan - Mar 2009	71.4	72.1	67.5	73.2	81.3	67.4	60.9	81.4	85.5	69.9	48.1
Apr - Jun 2009	70.6	71.4	66.0	71.9	81.5	69.9	58.6	80.8	85.1	65.6	48.5
Jul - Sep 2009	70.9	71.6	66.6	72.2	82.5	70.3	59.3	76.8	84.6	68.1	44.8
Oct - Dec 2009	70.7	71.5	66.3	71.0	83.1	73.2	60.2	76.6	85.5	68.8	45.7
Jan - Mar 2010	70.0	70.7	65.7	70.5	81.0	69.4	61.9	75.5	85.0	69.1	45.4
Apr - Jun 2010	70.3	70.9	66.5	70.4	82.7	68.7	60.9	78.9	80.9	72.8	46.6
Jul - Sep 2010	71.1	71.6	67.8	70.6	82.3	69.9	62.2	79.6	83.7	73.8	46.2
Oct - Dec 2010	70.7	71.2	67.3	71.1	82.6	67.9	62.8	80.8	87.2	71.8	48.0
Jan - Mar 2011	70.4	71.0	67.3	71.4	81.7	69.2	61.6	81.7	83.8	71.1	48.6
Change on year	0.4	0.3	1.6	0.9	0.6	-0.1	-0.3	6.2	-1.2	2.0	3.2
By nationality	LF9D	LFN8	LFN9	LFO2	LFO3	LFO4	LFO5	LFO6	LFO7	LFO8	LFO9
Jan - Mar 2005	72.8	73.4	65.0	71.6	75.1	76.7	56.4	78.9	90.4	67.0	39.6
Jan - Mar 2006	72.6	73.1	66.2	70.4	82.5	75.5	58.6	85.8	87.8	70.2	43.5
Jan - Mar 2007	72.2	72.7	66.4	73.2	81.0	72.4	56.8	86.4	84.7	69.5	46.9
Jan - Mar 2008	72.7	73.1	68.7	73.8	82.9	74.9	59.2	93.5	89.6	70.4	42.0
Jan - Mar 2009	71.4	71.7	68.2	72.6	82.5	71.2	55.3	85.4	85.2	70.1	45.8
Apr - Jun 2009	70.6	71.0	66.2	70.8	82.1	69.4	50.6	85.1	85.7	64.7	48.8
Jul - Sep 2009	70.9	71.2	67.8	71.3	83.0	71.3	52.7	82.3	87.1	67.2	45.5
Oct - Dec 2009	70.7	71.1	66.8	69.4	83.8	76.8	53.8	80.6	85.2	63.4	46.8
Jan - Mar 2010	70.0	70.4	65.6	69.1	82.2	69.7	56.8	75.6	81.1	64.5	45.2
Apr - Jun 2010	70.3	70.6	66.8	69.6	83.0	66.7	56.5	77.5	80.3	69.5	48.1
Jul - Sep 2010	71.1	71.4	68.3	70.2	82.5	69.3	57.7	84.2	82.1	71.7	46.5
Oct - Dec 2010	70.7	71.0	67.9	70.6	83.1	64.2	60.2	86.4	90.8	69.0	49.2
Jan - Mar 2011	70.4	70.7	67.8	71.8	82.4	65.3	57.2	89.5	86.1	70.7	46.9
Change on year	0.4	0.3	2.2	2.6	0.2	-4.3	0.4	13.9	5.0	6.2	1.7

Source: Labour Force Survey

Labour market statistics enquiries: labour.market@ons.gov.uk

1. People aged from 16 to 64.

2. This series is the not seasonally adjusted equivalent of the 16-64 employment rate series LF24 appearing at Table 1 of this Statistical Bulletin. It includes people who did not state their country of birth or nationality.

3. Austria, Belgium, Denmark, Finland, France, Germany, Greece, Ireland, Italy, Luxembourg, Netherlands, Portugal, Spain and Sweden.

4. Czech Republic, Estonia, Hungary, Latvia, Lithuania, Poland, Slovak Republic, Slovenia.

UNEMPLOYMENT

9(1) Unemployment by age and duration

United Kingdom (thousands), seasonally adjusted

	All aged 16 & over							All aged 16-64						
	All	Rate(%) ¹	Up to 6 months	Over 6 and up to 12 months	All over 12 months	% over 12 months	All over 24 months	All	Rate(%) ¹	Up to 6 months	Over 6 and up to 12 months	All over 12 months	% over 12 months	All over 24 months
	1	2	3	4	5	6	7	8	9	10	11	12	13	14
People	MGSC	MGSX	YBWF	YBWG	YBWH	YBWI	YBWL	LF2I	LF2Q	LF2Y	LF32	LF34	LF36	LF38
Mar-May 2009	2,377	7.6	1,408	437	532	22.4	236	2,359	7.7	1,400	433	526	22.3	234
Mar-May 2010	2,475	7.9	1,170	511	794	32.1	302	2,454	8.0	1,165	507	782	31.8	296
Jun-Aug 2010	2,453	7.8	1,167	466	819	33.4	332	2,434	7.9	1,159	463	811	33.3	327
Sep-Nov 2010	2,495	7.9	1,214	450	831	33.3	335	2,474	8.1	1,208	446	821	33.2	328
Dec-Feb 2011	2,478	7.8	1,191	443	844	34.1	369	2,461	8.0	1,184	440	837	34.0	363
Mar-May 2011	2,452	7.7	1,207	438	807	32.9	384	2,434	7.9	1,203	438	793	32.6	379
<i>Change on quarter</i>	-26	-0.1	16	-4	-37	-1.1	15	-26	-0.1	19	-2	-44	-1.4	15
<i>Change %</i>	-1.0		1.3	-1.0	-4.4		3.9	-1.1		1.6	-0.5	-5.2		4.2
<i>Change on year</i>	-23	-0.1	36	-73	13	0.8	82	-20	-0.1	37	-69	12	0.7	83
<i>Change %</i>	-0.9		3.1	-14.3	1.7		27.1	-0.8		3.2	-13.6	1.5		28.1
Men	MGSD	MGSY	MGYK	MGYM	MGYO	YBWK	YBWM	YBSI	YBTJ	YBWP	YBWS	YBWW	YBWX	YBWB
Mar-May 2009	1,454	8.6	837	272	345	23.7	166	1,442	8.7	831	268	343	23.8	165
Mar-May 2010	1,492	8.8	633	317	541	36.3	216	1,475	8.9	628	313	534	36.2	212
Jun-Aug 2010	1,439	8.4	615	266	557	38.7	234	1,424	8.6	610	263	552	38.7	230
Sep-Nov 2010	1,474	8.6	654	257	564	38.2	235	1,459	8.8	650	253	556	38.1	230
Dec-Feb 2011	1,442	8.4	624	253	565	39.2	261	1,430	8.6	621	251	558	39.0	258
Mar-May 2011	1,427	8.3	630	257	540	37.8	279	1,414	8.5	627	257	530	37.5	276
<i>Change on quarter</i>	-15	-0.1	6	4	-25	-1.3	18	-16	-0.1	6	6	-27	-1.5	18
<i>Change %</i>	-1.1		0.9	1.6	-4.5		6.8	-1.1		0.9	2.2	-4.9		7.0
<i>Change on year</i>	-65	-0.5	-3	-60	-2	1.5	63	-61	-0.4	-1	-56	-4	1.3	64
<i>Change %</i>	-4.4		-0.5	-18.9	-0.3		29.3	-4.2		-0.1	-18.0	-0.8		30.2
Women	MGSE	MGSZ	MGYL	MGYN	MGYP	YBWK	YBWN	LF2J	LF2R	LF2Z	LF33	LF35	LF37	LF39
Mar-May 2009	923	6.4	571	165	187	20.3	70	917	6.5	569	165	183	19.9	69
Mar-May 2010	984	6.8	537	194	253	25.7	86	979	6.9	538	194	247	25.2	84
Jun-Aug 2010	1,014	7.0	552	201	262	25.8	98	1,009	7.1	550	200	259	25.7	97
Sep-Nov 2010	1,021	7.0	560	193	268	26.2	99	1,016	7.2	558	193	265	26.1	98
Dec-Feb 2011	1,036	7.1	567	189	280	27.0	108	1,031	7.2	563	189	279	27.1	106
Mar-May 2011	1,026	7.0	577	181	268	26.1	104	1,021	7.2	576	181	263	25.8	103
<i>Change on quarter</i>	-10	-0.1	10	-8	-12	-0.9	-3	-10	-0.1	14	-8	-16	-1.3	-3
<i>Change %</i>	-1.0		1.8	-4.5	-4.2		-3.0	-1.0		2.4	-4.0	-5.8		-2.6
<i>Change on year</i>	42	0.2	40	-13	15	0.4	19	42	0.2	38	-13	16	0.5	19
<i>Change %</i>	4.2		7.4	-6.7	6.0		21.6	4.3		7.1	-6.5	6.4		22.6

	16-17							18-24						
	All	Rate(%) ¹	Up to 6 months	Over 6 and up to 12 months	All over 12 months	% over 12 months	All over 24 months	All	Rate(%) ¹	Up to 6 months	Over 6 and up to 12 months	All over 12 months	% over 12 months	All over 24 months
	15	16	17	18	19	20	21	22	23	24	25	26	27	28
People	YBVH	YBVK	YBXD	YBXG	YBXJ	YBXM	YBXP	YBVN	YBVQ	YBXS	YBXV	YBXY	YBYB	YBYE
Mar-May 2009	200	30.8	145	35	20	10.2	*	731	17.5	456	139	136	18.6	51
Mar-May 2010	217	35.8	143	52	22	10.3	*	718	17.4	374	148	195	27.2	72
Jun-Aug 2010	178	31.3	121	33	24	13.5	*	744	17.8	411	124	209	28.1	72
Sep-Nov 2010	205	36.7	143	36	26	12.5	*	745	18.1	407	135	203	27.2	72
Dec-Feb 2011	218	38.0	152	40	26	11.9	*	742	17.9	406	137	198	26.6	76
Mar-May 2011	202	36.3	137	40	25	12.1	*	715	17.4	404	132	179	25.1	79
<i>Change on quarter</i>	-16	-1.7	-15	0	-1	0.3	*	-26	-0.5	-3	-6	-18	-1.6	3
<i>Change %</i>	-7.2		-9.6	0.9	-5.1		*	-3.6		-0.6	-4.1	-9.2		4.6
<i>Change on year</i>	-15	0.5	-5	-12	2	1.8	*	-3	0.0	29	-16	-16	-2.1	7
<i>Change %</i>	-6.8		-3.6	-22.5	9.3		*	-0.4		7.8	-11.0	-8.1		10.3
Men	YBVI	YBVL	YBXE	YBXH	YBXK	YBXN	YBXQ	YBVO	YBVR	YBXT	YBXW	YBXZ	YBYC	YBYF
Mar-May 2009	110	33.7	76	20	13	11.9	*	451	20.1	271	92	89	19.6	39
Mar-May 2010	122	41.2	76	34	12	10.1	*	435	19.7	198	92	144	33.2	57
Jun-Aug 2010	94	34.2	63	17	15	15.6	*	438	19.6	220	70	148	33.8	55
Sep-Nov 2010	108	39.9	73	20	15	14.1	*	440	19.7	224	79	137	31.2	47
Dec-Feb 2011	114	42.0	79	21	14	11.9	*	435	19.6	221	85	130	29.7	48
Mar-May 2011	107	39.8	68	23	15	14.2	*	433	19.5	225	87	122	28.1	56
<i>Change on quarter</i>	-7	-2.2	-11	2	1	2.2	*	-2	-0.1	5	1	-8	-1.7	8
<i>Change %</i>	-6.4		-13.9	10.6	11.0		*	-0.5		2.0	1.5	-6.0		17.0
<i>Change on year</i>	-16	-1.3	-8	-10	3	4.0	*	-1	-0.2	27	-6	-23	-5.1	-1
<i>Change %</i>	-13.0		-10.9	-30.4	21.7		*	-0.3		13.5	-6.2	-15.7		-1.4
Women	YBVJ	YBVM	YBXF	YBXI	YBXL	YBXO	YBXR	YBVP	YBVS	YBXU	YBXV	YBYA	YBYD	YBYG
Mar-May 2009	90	27.9	69	14	*	*	*	279	14.5	185	47	47	16.9	12
Mar-May 2010	94	30.6	66	18	10	10.6	*	283	14.8	176	56	51	18.0	15
Jun-Aug 2010	84	28.6	58	16	*	*	*	306	15.7	191	54	61	19.9	17
Sep-Nov 2010	97	33.6	71	16	10	10.7	*	304	16.2	184	55	65	21.5	26
Dec-Feb 2011	104	34.4	73	19	12	11.8	*	306	16.0	186	52	68	22.2	28
Mar-May 2011	96	33.0	69	17	*	*	*	282	14.9	179	45	58	20.5	23
<i>Change on quarter</i>	-8	-1.4	-4	-2	*	*	*	-24	-1.1	-7	-7	-10	-1.7	-5
<i>Change %</i>	-8.0		-5.0	-10.1	*	*	*	-7.9		-3.8	-13.2	-15.2		-16.8
<i>Change on year</i>	1	2.4	3	-1	*	*	*	-1	0.1	3	-11	7	2.5	8
<i>Change %</i>	1.2		4.8	-7.9	*	*	*	-0.4		1.4	-19.0	13.3		54.3

Relationship between columns: 1=3+4+5; 8=10+11+12; 15=17+18+19; 22=24+25+26.

Source: Labour Force Survey

1. Denominator = economically active for that age group.

Labour market statistics enquiries: labour.market@ons.gov.uk

UNEMPLOYMENT

9(2) Unemployment by age and duration

United Kingdom (thousands), seasonally adjusted

	25-49							50 and over						
	All	Rate(%) ¹	Up to 6 months	Over 6 and up to 12 months	All over 12 months	% over 12 months	All over 24 months	All	Rate(%) ¹	Up to 6 months	Over 6 and up to 12 months	All over 12 months	% over 12 months	All over 24 months
	1	2	3	4	5	6	7	8	9	10	11	12	13	14
People	MGVI	MGXB	YBYH	YBYK	YBYN	YBYQ	YBYT	YBVT	YBVW	YBYW	YBYZ	YBZC	YBZF	YBZI
Mar-May 2009	1,089	6.0	625	197	267	24.5	126	357	4.3	182	66	109	30.5	58
Mar-May 2010	1,158	6.3	511	238	409	35.3	156	383	4.5	142	73	167	43.7	73
Jun-Aug 2010	1,145	6.3	485	237	423	36.9	177	386	4.5	151	72	163	42.3	82
Sep-Nov 2010	1,160	6.3	513	209	438	37.8	185	385	4.5	151	70	165	42.7	75
Dec-Feb 2011	1,130	6.2	491	195	445	39.4	210	388	4.5	142	71	176	45.4	82
Mar-May 2011	1,145	6.2	508	201	435	38.0	205	390	4.5	157	65	168	43.1	97
<i>Change on quarter</i>	14	0.1	17	7	-10	-1.3	-5	2	0.0	16	-6	-8	-2.2	16
<i>Change %</i>	1.3		3.5	3.4	-2.2		-2.3	0.5		11.1	-8.2	-4.5		19.4
<i>Change on year</i>	-13	-0.1	-3	-37	26	2.7	49	8	0.0	15	-8	1	-0.6	24
<i>Change %</i>	-1.2		-0.5	-15.5	6.4		31.7	2.0		10.3	-11.0	0.6		32.5
Men	MGVJ	MGXC	YBYI	YBYL	YBYO	YBYR	YBYU	YBVU	YBVX	YBYX	YBZA	YBZD	YBZG	YBZJ
Mar-May 2009	638	6.5	366	111	162	25.4	83	255	5.5	124	49	82	32.0	44
Mar-May 2010	669	6.8	263	140	266	39.8	106	265	5.7	96	52	118	44.5	53
Jun-Aug 2010	648	6.6	239	133	276	42.6	119	258	5.5	94	46	118	45.8	60
Sep-Nov 2010	661	6.7	262	111	288	43.5	130	265	5.6	96	47	123	46.5	57
Dec-Feb 2011	630	6.4	236	100	294	46.6	153	262	5.5	88	46	128	48.8	60
Mar-May 2011	624	6.3	243	104	277	44.3	147	263	5.5	93	43	126	48.0	74
<i>Change on quarter</i>	-6	-0.1	7	4	-17	-2.2	-6	0	0.0	5	-3	-2	-0.8	14
<i>Change %</i>	-1.0		2.9	3.7	-5.7		-3.7	0.0		6.2	-6.9	-1.7		24.2
<i>Change on year</i>	-45	-0.5	-19	-36	10	4.5	41	-3	-0.2	-2	-8	8	3.5	21
<i>Change %</i>	-6.7		-7.4	-25.4	3.9		38.4	-1.1		-2.5	-16.4	6.7		40.3
Women	MGVK	MGXD	YBYJ	YBYM	YBYP	YBYS	YBYV	YBVV	YBVY	YBYY	YBZB	YBZE	YBZH	YBZK
Mar-May 2009	451	5.4	259	87	106	23.4	42	102	2.8	58	17	27	26.5	14
Mar-May 2010	489	5.8	248	98	143	29.1	49	117	3.1	47	21	49	42.1	21
Jun-Aug 2010	497	5.9	246	104	147	29.5	58	128	3.3	57	26	45	35.3	22
Sep-Nov 2010	500	5.9	251	98	151	30.1	55	120	3.1	56	23	41	34.4	18
Dec-Feb 2011	500	5.9	254	94	151	30.3	57	126	3.2	54	24	48	38.2	22
Mar-May 2011	521	6.1	265	97	158	30.4	58	128	3.3	64	22	42	33.1	23
<i>Change on quarter</i>	21	0.2	11	3	7	0.2	1	2	0.0	10	-3	-6	-5.0	1
<i>Change %</i>	4.1		4.2	3.1	4.7		1.4	1.5		19.1	-10.8	-11.9		6.2
<i>Change on year</i>	31	0.3	17	-1	16	1.3	8	11	0.2	17	0	-7	-8.9	3
<i>Change %</i>	6.4		6.7	-1.3	11.1		17.2	9.1		36.7	2.0	-14.1		12.4

Relationship between columns: 1=3+4+5; 8=10+11+12.

1. Denominator = economically active for that age group.

Source: Labour Force Survey
Labour market statistics enquiries: labour.market@ons.gov.uk

CLAIMANT COUNT

10 Claimant count¹ levels and rates

United Kingdom (thousands)
seasonally adjusted

	Claimant count (all aged 18+)		Inflows: all aged 18+ (standardised)	Outflows: all aged 18+ (standardised)	Claimant count (all aged 16+) (not seasonally adjusted)	
	Level	Rate (%) ²	Level	Level	Level	Rate (%) ²
	BCJD	BCJE	DPRD	DPRE	BCJA	BCJB
People						
2010						
June	1,469.2	4.6	304.5	327.2	1,444.1	4.5
July	1,465.4	4.6	318.4	325.7	1,441.0	4.5
August #	1,466.1	4.6	325.3	324.5	1,456.0	4.5
September	1,468.0	4.6	325.9	322.6	1,439.6	4.5
October #	1,462.8	4.6	328.3	325.7	1,416.8	4.4
November	1,460.0	4.5	326.1	329.2	1,413.3	4.4
December	1,454.6	4.5	324.6	333.7	1,425.2	4.4
2011						
January #	1,458.3	4.5	324.4	341.5	1,505.1	4.7
February	1,449.8	4.5	323.9	328.3	1,538.2	4.8
March	1,456.2	4.5	327.4	324.7	1,526.9	4.8
April #	1,473.1	4.6	331.1	314.4	1,520.8	4.7
May (r)	1,495.6	4.7	309.1	291.5	1,504.9	4.7
June (p)	1,520.1	4.7	325.1	300.2	1,493.1	4.6
<i>Change on month</i>	24.5	0.1	16.0	8.7	-11.8	0.0
<i>Change %</i>	1.6		5.2	3.0	-0.8	
<i>Change on year</i>	50.9	0.2	20.6	-27.0	49.0	0.2
<i>Change %</i>	3.5		6.8	-8.3	3.4	
	DPAE	DPAH	GDZX	GEYR	DPAA	DPAC
Men						
2010						
June	1,052.2	6.1	207.9	227.7	1,034.8	6.0
July	1,044.1	6.0	216.3	226.2	1,018.9	5.9
August #	1,040.1	6.0	222.3	225.0	1,016.5	5.9
September	1,037.8	6.0	221.9	223.3	1,001.9	5.8
October #	1,030.0	5.9	222.7	225.2	987.9	5.7
November	1,022.0	5.9	218.2	227.3	986.5	5.7
December	1,013.0	5.8	217.5	229.1	1,001.8	5.8
2011						
January #	1,008.3	5.8	214.1	234.6	1,050.7	6.1
February	992.6	5.7	212.4	223.5	1,062.8	6.1
March	991.1	5.7	216.0	219.9	1,048.7	6.0
April #	997.9	5.7	219.0	213.1	1,034.2	6.0
May (r)	1,011.2	5.8	203.0	194.4	1,020.4	5.9
June (p)	1,026.2	5.9	214.0	200.3	1,007.5	5.8
<i>Change on month</i>	15.0	0.1	11.0	5.9	-12.8	-0.1
<i>Change %</i>	1.5		5.4	3.0	-1.3	
<i>Change on year</i>	-26.0	-0.1	6.1	-27.4	-27.3	-0.2
<i>Change %</i>	-2.5		2.9	-12.0	-2.6	
	DPAF	DPAI	GEYS	GEYT	DPAB	DPAD
Women						
2010						
June	417.0	2.8	96.6	99.5	409.3	2.8
July	421.3	2.9	102.1	99.5	422.2	2.9
August #	426.0	2.9	103.0	99.5	439.5	3.0
September	430.2	2.9	104.0	99.3	437.7	3.0
October #	432.8	2.9	105.6	100.5	428.9	2.9
November	438.0	3.0	107.9	101.9	426.8	2.9
December	441.6	3.0	107.1	104.6	423.3	2.9
2011						
January #	450.0	3.0	110.3	106.9	454.3	3.1
February	457.2	3.1	111.5	104.8	475.4	3.2
March	465.1	3.1	111.4	104.8	478.3	3.2
April #	475.2	3.2	112.1	101.3	486.6	3.3
May (r)	484.4	3.3	106.1	97.1	484.5	3.3
June (p)	493.9	3.3	111.1	99.9	485.5	3.3
<i>Change on month</i>	9.5	0.1	5.0	2.8	1.0	0.0
<i>Change %</i>	2.0		4.7	2.9	0.2	
<i>Change on year</i>	76.9	0.5	14.5	0.4	76.3	0.5
<i>Change %</i>	18.4		15.0	0.4	18.6	

1. The claimant count measures the number of people claiming Jobseeker's Allowance. Source: Jobcentre Plus administrative system

The level measures the number of claimants on the second Thursday of each month (the "count date").

The flows figures are collected for 4 or 5 week periods between count dates; the figures are then standardised to a 4¹/₃ week month. The levels and flows are independently seasonally adjusted. For these reasons, movements in the flows do not tally exactly with movements in the levels.

2. Denominator = Claimant count + Workforce jobs.

More detailed estimates are available from Nomis® at:

<http://www.nomisweb.co.uk>

Months where there are 5 weeks between count dates; the rest are 4 week periods.

Labour market statistics enquiries: labour.market@ons.gov.uk

CLAIMANT COUNT

10(1) Lone Parent¹ Claimants of Jobseeker's Allowance by Age of Youngest Child² (Experimental Statistics)

Great Britain
not seasonally adjusted

	Claimant Count (all aged 16+) ⁴	Experimental Statistics ³				
		Lone Parents on Claimant Count ⁵	Age of Youngest Child			
			Age 0-6	Age 7-9	Age 10-11	Age 12-15
	BCJG	JD9Z	JDA2	JDA3	JDA4	JDA5
People 2010						
May #	1,447,000	70,130	7,380	2,115	16,625	44,010
June	1,388,800	69,535	7,080	2,110	17,365	42,980
July	1,384,000	72,230	7,010	2,100	20,400	42,720
August #	1,397,000	76,210	6,895	2,110	24,705	42,500
September	1,381,100	78,145	6,890	2,250	26,895	42,110
October #	1,359,300	76,755	6,840	2,570	26,800	40,545
November	1,356,400	80,680	6,860	7,275	26,675	39,865
December	1,368,300	85,320	6,770	12,835	26,305	39,415
2011						
January #	1,445,400	97,050	6,905	22,765	27,460	39,920
February	1,477,700	106,255	6,980	32,015	27,620	39,645
March	1,467,000	112,600	7,230	39,055	27,340	38,975
April #	1,461,600	118,195	7,360	44,875	27,200	38,760
May	1,446,300	118,655	7,380	46,270	26,900	38,100
<i>Change on month</i>		460	20	1,395	-300	-660
<i>Change %</i>		0.4	0.3	3.1	-1.1	-1.7
<i>Change on year</i>		48,525	0	44,155	10,275	-5,910
<i>Change %</i>		69.2	0.0	2,087.7	61.8	-13.4

Source: Jobcentre Plus administrative system and HM Revenue & Customs child benefit data
Labour market statistics enquiries: labour.market@ons.gov.uk

1. Lone Parents are defined as those claiming Child Benefit for at least one child aged under 16 at the Jobseeker's Allowance (JSA) count date (second Thursday of the month) who have their marital status recorded as single, widowed, divorced or separated.
2. Age of youngest child relates to the age of the youngest child at the JSA count date.
3. These figures are experimental statistics and may be subject to retrospective changes as and when the Department for Work and Pensions (DWP) receive updated Child Benefit data.
4. The number of people claiming JSA in Great Britain. These figures are different from the figures at table 10 (series BCJA) which relate to the UK. Series BCJA (shown at Table 10) and BCJG (shown above) also include clerical claims which are not used in producing the subsequent lone parent series and are therefore slightly different to JSA figures published by the DWP on similar tables in their publications.
5. Some JSA claimants have their marital status coded as "not known". Such claimants who are claiming Child Benefit for at least one child aged under 16 may be lone parents but are not recorded as such in the above table.

The estimates for Lone Parent claimants shown in the above table are produced a month later than the Claimant Count estimates shown at table 10 of this Statistical Bulletin.

From 24 November 2008 most lone parents with older children are no longer entitled to Income Support if they are only claiming it because they are a lone parent. Instead those able to work may be entitled to claim Jobseeker's Allowance. This change has been introduced for most lone parents with (i) a youngest child aged 12 or over from 24 November 2008, (ii) a youngest child aged 10 or over from 26 October 2009, (iii) a youngest child aged 7 or over from 25 October 2010.

Further estimates of lone parents claiming JSA are available from DWP at <http://statistics.dwp.gov.uk/asd/>

Months where there are 5 weeks between count dates. All the rest are 4 week periods.

CLAIMANT COUNT

11(1) Claimant count¹ by age and duration²

United Kingdom (thousands), seasonally adjusted

People	All aged 18 and over							18-24					
	All claimants aged 18+	Computerised claims: All aged 18+ ²	Up to 6 months	Over 6 and up to 12 months	All over 12 months	Percentage claiming over 12 months	All over 24 months	All computerised claims ²	Up to 6 months	Over 6 and up to 12 months	All over 12 months	Percentage claiming over 12 months	All over 24 months
	1	2	3	4	5	6	7	8	9	10	11	12	13
	BCJD	AGLX	AGLZ	AGMC	AGMD	AGMY	AGMZ	AGNA	AGNB	AGNC	AGND	AGNE	AGNF
2010													
June	1,469.2	1,464.1	906.5	292.5	265.1	18.1	45.8	419.1	323.3	68.0	27.8	6.6	2.2
July	1,465.4	1,460.7	917.4	278.7	264.6	18.1	48.5	416.2	327.0	62.0	27.2	6.5	2.3
August #	1,466.1	1,461.2	931.7	266.7	262.8	18.0	51.6	414.5	331.4	57.1	26.0	6.3	2.4
September	1,468.0	1,463.7	943.7	259.9	260.1	17.8	53.7	415.7	336.0	54.4	25.3	6.1	2.6
October #	1,462.8	1,458.0	952.7	251.9	253.4	17.4	55.0	414.1	339.1	51.2	23.8	5.7	2.7
November	1,460.0	1,454.9	959.6	249.9	245.4	16.9	55.6	414.7	341.9	50.7	22.1	5.3	3.0
December	1,454.6	1,449.3	963.2	248.2	237.9	16.4	56.0	410.3	338.8	50.3	21.2	5.2	3.4
2011													
January #	1,458.3	1,452.6	966.3	255.1	231.2	15.9	57.0	415.1	342.0	53.0	20.1	4.8	3.9
February	1,449.8	1,444.4	959.4	259.1	225.9	15.6	57.0	412.1	338.5	54.4	19.2	4.7	4.2
March	1,456.2	1,451.3	966.0	264.0	221.3	15.2	57.1	415.1	339.6	57.7	17.8	4.3	4.3
April #	1,473.1	1,468.4	980.2	270.8	217.4	14.8	57.9	423.2	345.0	61.4	16.8	4.0	4.6
May (r)	1,495.6	1,491.0	993.4	281.0	216.6	14.5	59.0	430.3	349.2	64.6	16.5	3.8	4.8
June (p)	1,520.1	1,515.8	1,008.0	290.7	217.1	14.3	60.5	438.6	354.3	67.6	16.7	3.8	5.0
Change on month	24.5	24.8	14.6	9.7	0.5	-0.2	1.5	8.3	5.1	3.0	0.2	0.0	0.2
Change %	1.6	1.7	1.5	3.5	0.2		2.5	1.9	1.5	4.6	1.2		4.2
Change on year	50.9	51.7	101.5	-1.8	-48.0	-3.8	14.7	19.5	31.0	-0.4	-11.1	-2.8	2.8
Change %	3.5	3.5	11.2	-0.6	-18.1		32.1	4.7	9.6	-0.6	-39.9		127.3
Men	DPAE	AGNG	AGXK	ELNP	ELON	GBHG	IKBS	JLGC	JLGD	JLGE	JLGF	JLGG	JLGH
2010													
June	1,052.2	1,048.6	629.1	210.8	208.7	19.9	36.7	287.8	220.1	47.5	20.2	7.0	1.5
July	1,044.1	1,040.6	632.3	200.5	207.8	20.0	39.0	284.9	221.9	43.2	19.8	6.9	1.6
August #	1,040.1	1,036.6	640.6	191.6	204.4	19.7	41.6	283.1	224.4	39.9	18.8	6.6	1.7
September	1,037.8	1,034.6	648.0	185.6	201.0	19.4	43.3	283.7	227.4	37.9	18.4	6.5	1.8
October #	1,030.0	1,026.4	652.4	179.3	194.7	19.0	44.5	282.2	229.1	35.8	17.3	6.1	1.9
November	1,022.0	1,018.4	653.5	177.6	187.3	18.4	45.0	282.1	230.4	35.5	16.2	5.7	2.1
December	1,013.0	1,009.3	652.7	176.1	180.5	17.9	45.4	278.2	227.6	35.1	15.5	5.6	2.4
2011													
January #	1,008.3	1,004.1	649.7	179.5	174.9	17.4	46.1	281.5	229.8	36.9	14.8	5.3	2.8
February	992.6	988.9	637.4	181.5	170.0	17.2	46.1	277.5	225.6	37.7	14.2	5.1	3.0
March	991.1	987.5	637.4	184.8	165.3	16.7	45.9	278.6	225.6	39.8	13.2	4.7	3.1
April #	997.9	994.5	643.6	189.4	161.5	16.2	46.3	283.8	229.4	42.1	12.3	4.3	3.3
May (r)	1,011.2	1,008.1	653.0	194.5	160.6	15.9	47.0	288.6	232.5	44.1	12.0	4.2	3.5
June (p)	1,026.2	1,023.4	662.9	199.7	160.8	15.7	48.1	294.6	236.5	46.0	12.1	4.1	3.7
Change on month	15.0	15.3	9.9	5.2	0.2	-0.2	1.1	6.0	4.0	1.9	0.1	-0.1	0.2
Change %	1.5	1.5	1.5	2.7	0.1		2.3	2.1	1.7	4.3	0.8		5.7
Change on year	-26.0	-25.2	33.8	-11.1	-47.9	-4.2	11.4	6.8	16.4	-1.5	-8.1	-2.9	2.2
Change %	-2.5	-2.4	5.4	-5.3	-23.0		31.1	2.4	7.5	-3.2	-40.1		146.7
Women	DPAF	JLGI	JLJK	JLJG	JLJL	JLJM	JLJN	JLJO	JLJP	JLJQ	JLJR	JLJS	JLJT
2010													
June	417.0	415.5	277.4	81.7	56.4	13.6	9.1	131.3	103.2	20.5	7.6	5.8	0.7
July	421.3	420.1	285.1	78.2	56.8	13.5	9.5	131.3	105.1	18.8	7.4	5.6	0.7
August #	426.0	424.6	291.1	75.1	58.4	13.8	10.0	131.4	107.0	17.2	7.2	5.5	0.7
September	430.2	429.1	295.7	74.3	59.1	13.8	10.4	132.0	108.6	16.5	6.9	5.2	0.8
October #	432.8	431.6	300.3	72.6	58.7	13.6	10.5	131.9	110.0	15.4	6.5	4.9	0.8
November	438.0	436.5	306.1	72.3	58.1	13.3	10.6	132.6	111.5	15.2	5.9	4.4	0.9
December	441.6	440.0	310.5	72.1	57.4	13.0	10.6	132.1	111.2	15.2	5.7	4.3	1.0
2011													
January #	450.0	448.5	316.6	75.6	56.3	12.6	10.9	133.6	112.2	16.1	5.3	4.0	1.1
February	457.2	455.5	322.0	77.6	55.9	12.3	10.9	134.6	112.9	16.7	5.0	3.7	1.2
March	465.1	463.8	328.6	79.2	56.0	12.1	11.2	136.5	114.0	17.9	4.6	3.4	1.2
April #	475.2	473.9	336.6	81.4	55.9	11.8	11.6	139.4	115.6	19.3	4.5	3.2	1.3
May (r)	484.4	482.9	340.4	86.5	56.0	11.6	12.0	141.7	116.7	20.5	4.5	3.2	1.3
June (p)	493.9	492.4	345.1	91.0	56.3	11.4	12.4	144.0	117.8	21.6	4.6	3.2	1.3
Change on month	9.5	9.5	4.7	4.5	0.3	-0.2	0.4	2.3	1.1	1.1	0.1	0.0	0.0
Change %	2.0	2.0	1.4	5.2	0.5		3.3	1.6	0.9	5.4	2.2		0.0
Change on year	76.9	76.9	67.7	9.3	-0.1	-2.1	3.3	12.7	14.6	1.1	-3.0	-2.6	0.6
Change %	18.4	18.5	24.4	11.4	-0.2		36.3	9.7	14.1	5.4	-39.5		85.7

Relationship between columns: 2= 3+4+5; 6= 5/2; 8= 9+10+11; 12= 11/8.

Source: Jobcentre Plus administrative system

1. The number of people claiming Jobseeker's Allowance.

Labour market statistics enquiries: labour.market@ons.gov.uk

2. Only computerised claims are analysed by age and duration on a monthly basis. The figures in column 2 onwards therefore differ from the figures in column 1 and in table 10. The differences reflect numbers of clerically processed claims, which currently amount to less than 1 per cent of the total claimant count, and minor effects of rounding.

Months where there are 5 weeks between count dates. All the rest are 4 week periods.

CLAIMANT COUNT

11(2) Claimant count¹ by age and duration²

United Kingdom (thousands), seasonally adjusted

People	25-49						50 and over					
	All computerised claims ²	Up to 6 months	Over 6 and up to 12 months	All over 12 months	Percentage claiming over 12 months	All over 24 months	All computerised claims ²	Up to 6 months	Over 6 and up to 12 months	All over 12 months	Percentage claiming over 12 months	All over 24 months
	14	15	16	17	18	19	20	21	22	23	24	25
	JLJU	JLGV	JLGW	JLGX	JLGY	JLGZ	JLHA	JLHB	JLHC	JLHD	JLHE	JLHF
2010												
June	819.6	463.6	176.7	179.3	21.9	30.9	225.4	119.6	47.8	58.0	25.7	12.7
July	820.1	469.9	170.9	179.3	21.9	32.8	224.4	120.5	45.8	58.1	25.9	13.4
August #	821.7	477.4	165.5	178.8	21.8	34.9	225.0	122.9	44.1	58.0	25.8	14.3
September	822.6	482.6	162.7	177.3	21.6	36.3	225.4	125.1	42.8	57.5	25.5	14.8
October #	819.0	486.9	159.0	173.1	21.1	37.0	224.9	126.7	41.7	56.5	25.1	15.3
November	816.4	490.2	157.9	168.3	20.6	37.3	223.8	127.5	41.3	55.0	24.6	15.3
December	815.3	495.6	156.5	163.2	20.0	37.4	223.7	128.8	41.4	53.5	23.9	15.2
2011												
January #	816.0	497.4	159.8	158.8	19.5	37.6	221.5	126.9	42.3	52.3	23.6	15.5
February	812.2	495.1	161.6	155.5	19.1	37.5	220.1	125.8	43.1	51.2	23.3	15.3
March	815.7	499.7	162.8	153.2	18.8	37.6	220.5	126.7	43.5	50.3	22.8	15.2
April #	822.7	506.6	164.9	151.2	18.4	38.0	222.5	128.6	44.5	49.4	22.2	15.3
May (r)	834.6	513.7	170.2	150.7	18.1	38.6	226.1	130.5	46.2	49.4	21.8	15.6
June (p)	847.1	521.0	175.4	150.7	17.8	39.5	230.1	132.7	47.7	49.7	21.6	16.0
Change on month	12.5	7.3	5.2	0.0	-0.3	0.9	4.0	2.2	1.5	0.3	-0.2	0.4
Change %	1.5	1.4	3.1	0.0		2.3	1.8	1.7	3.2	0.6		2.6
Change on year	27.5	57.4	-1.3	-28.6	-4.1	8.6	4.7	13.1	-0.1	-8.3	-4.1	3.3
Change %	3.4	12.4	-0.7	-16.0		27.8	2.1	11.0	-0.2	-14.3		26.0
Men	AGMA	JLHG	JLHH	JLHI	JLHJ	JLHK	JLHL	JLHM	JLHN	JLHO	JLHP	JLHQ
2010												
June	602.1	327.7	129.8	144.6	24.0	25.3	158.7	81.3	33.5	43.9	27.7	9.9
July	598.4	328.9	125.3	144.2	24.1	27.0	157.3	81.5	32.0	43.8	27.8	10.4
August #	596.4	333.3	121.0	142.1	23.8	28.8	157.1	82.9	30.7	43.5	27.7	11.1
September	594.1	336.3	118.1	139.7	23.5	30.0	156.8	84.3	29.6	42.9	27.4	11.5
October #	588.5	338.2	114.8	135.5	23.0	30.7	155.7	85.1	28.7	41.9	26.9	11.9
November	581.9	337.6	113.7	130.6	22.4	31.0	154.4	85.5	28.4	40.5	26.2	11.9
December	577.0	338.7	112.5	125.8	21.8	31.1	154.1	86.4	28.5	39.2	25.4	11.9
2011												
January #	570.8	335.3	113.5	122.0	21.4	31.2	151.8	84.6	29.1	38.1	25.1	12.1
February	561.6	328.7	114.3	118.6	21.1	31.1	149.8	83.1	29.5	37.2	24.8	12.0
March	559.7	328.7	115.2	115.8	20.7	31.0	149.2	83.1	29.8	36.3	24.3	11.8
April #	560.9	330.5	116.7	113.7	20.3	31.2	149.8	83.7	30.6	35.5	23.7	11.8
May (r)	567.8	336.0	118.8	113.0	19.9	31.5	151.7	84.5	31.6	35.6	23.5	12.0
June (p)	574.9	340.8	121.2	112.9	19.6	32.2	153.9	85.6	32.5	35.8	23.3	12.2
Change on month	7.1	4.8	2.4	-0.1	-0.3	0.7	2.2	1.1	0.9	0.2	-0.2	0.2
Change %	1.3	1.4	2.0	-0.1		2.2	1.5	1.3	2.8	0.6		1.7
Change on year	-27.2	13.1	-8.6	-31.7	-4.4	6.9	-4.8	4.3	-1.0	-8.1	-4.4	2.3
Change %	-4.5	4.0	-6.6	-21.9		27.3	-3.0	5.3	-3.0	-18.5		23.2
Women	JLHR	JLHS	JLHT	JLHU	JLHV	JLHW	JLHX	JLHY	JLHZ	JLIA	JLIB	JLIC
2010												
June	217.5	135.9	46.9	34.7	16.0	5.6	66.7	38.3	14.3	14.1	21.1	2.8
July	221.7	141.0	45.6	35.1	15.8	5.8	67.1	39.0	13.8	14.3	21.3	3.0
August #	225.3	144.1	44.5	36.7	16.3	6.1	67.9	40.0	13.4	14.5	21.4	3.2
September	228.5	146.3	44.6	37.6	16.5	6.3	68.6	40.8	13.2	14.6	21.3	3.3
October #	230.5	148.7	44.2	37.6	16.3	6.3	69.2	41.6	13.0	14.6	21.1	3.4
November	234.5	152.6	44.2	37.7	16.1	6.3	69.4	42.0	12.9	14.5	20.9	3.4
December	238.3	156.9	44.0	37.4	15.7	6.3	69.6	42.4	12.9	14.3	20.5	3.3
2011												
January #	245.2	162.1	46.3	36.8	15.0	6.4	69.7	42.3	13.2	14.2	20.4	3.4
February	250.6	166.4	47.3	36.9	14.7	6.4	70.3	42.7	13.6	14.0	19.9	3.3
March	256.0	171.0	47.6	37.4	14.6	6.6	71.3	43.6	13.7	14.0	19.6	3.4
April #	261.8	176.1	48.2	37.5	14.3	6.8	72.7	44.9	13.9	13.9	19.1	3.5
May (r)	266.8	177.7	51.4	37.7	14.1	7.1	74.4	46.0	14.6	13.8	18.5	3.6
June (p)	272.2	180.2	54.2	37.8	13.9	7.3	76.2	47.1	15.2	13.9	18.2	3.8
Change on month	5.4	2.5	2.8	0.1	-0.2	0.2	1.8	1.1	0.6	0.1	-0.3	0.2
Change %	2.0	1.4	5.4	0.3		2.8	2.4	2.4	4.1	0.7		5.6
Change on year	54.7	44.3	7.3	3.1	-2.1	1.7	9.5	8.8	0.9	-0.2	-2.9	1.0
Change %	25.1	32.6	15.6	8.9		30.4	14.2	23.0	6.3	-1.4		35.7

Relationship between columns: 14 = 15+16+17; 18 = 17/14; 20 = 21+22+23; 24 = 23/20.

Source: Jobcentre Plus administrative system

1. The number of people claiming Jobseeker's Allowance.

Labour market statistics enquiries: labour.market@ons.gov.uk

2. Only computerised claims are analysed by age and duration on a monthly basis. The figures in column 2 onwards therefore differ from the figures in column 1 and in table 10. The differences reflect numbers of clerically processed claims, which currently amount to less than 1 per cent of the total claimant count, and minor effects of rounding.

Months where there are 5 weeks between count dates. All the rest are 4 week periods.

ECONOMIC ACTIVITY AND INACTIVITY

12 Economic activity by age

United Kingdom (thousands), seasonally adjusted

	All aged 16 & over	16 - 64	16 - 17	18 - 24	25 - 34	35 - 49	50 - 64	65+
	1	2	3	4	5	6	7	8
Economically active levels								
People	MGSF	LF2K	YBZL	YBZO	YBZR	YBZU	LF3A	LFK8
Mar-May 2009	31,347	30,605	649	4,170	6,679	11,518	7,588	742
Mar-May 2010	31,445	30,624	606	4,122	6,829	11,429	7,639	821
Jun-Aug 2010	31,602	30,737	567	4,177	6,899	11,423	7,671	865
Sep-Nov 2010	31,588	30,695	559	4,113	6,967	11,392	7,665	893
Dec-Feb 2011	31,707	30,806	573	4,132	7,000	11,369	7,733	901
Mar-May 2011	31,731	30,818	557	4,109	7,056	11,335	7,761	913
Change on quarter	24	12	-16	-23	56	-34	27	13
Change %	0.1	0.0	-2.8	-0.5	0.8	-0.3	0.4	1.4
Change on year	286	194	-49	-13	227	-93	122	92
Change %	0.9	0.6	-8.1	-0.3	3.3	-0.8	1.6	11.2
Men	MGSG	YBSL	YBZM	YBZP	YBZS	YBZV	YBZY	YCAE
Mar-May 2009	16,996	16,543	325	2,247	3,692	6,101	4,179	453
Mar-May 2010	16,974	16,489	298	2,209	3,771	6,030	4,180	485
Jun-Aug 2010	17,053	16,532	275	2,232	3,824	6,018	4,183	521
Sep-Nov 2010	17,079	16,542	270	2,235	3,840	6,020	4,177	538
Dec-Feb 2011	17,105	16,577	271	2,223	3,853	6,021	4,209	529
Mar-May 2011	17,139	16,593	268	2,222	3,872	6,016	4,216	546
Change on quarter	34	16	-3	-1	19	-6	7	17
Change %	0.2	0.1	-1.2	0.0	0.5	-0.1	0.2	3.3
Change on year	165	104	-30	13	101	-14	35	60
Change %	1.0	0.6	-10.1	0.6	2.7	-0.2	0.8	12.5
Women	MGSH	LF2L	YBZN	YBZQ	YBZT	YBZW	LF3B	LFK9
Mar-May 2009	14,350	14,061	324	1,923	2,988	5,417	3,409	289
Mar-May 2010	14,471	14,135	308	1,912	3,057	5,399	3,459	336
Jun-Aug 2010	14,549	14,205	292	1,946	3,075	5,405	3,487	344
Sep-Nov 2010	14,508	14,153	289	1,878	3,127	5,371	3,488	355
Dec-Feb 2011	14,601	14,229	302	1,908	3,147	5,348	3,525	372
Mar-May 2011	14,592	14,225	289	1,887	3,184	5,320	3,545	367
Change on quarter	-10	-5	-13	-22	37	-28	20	-5
Change %	-0.1	0.0	-4.1	-1.1	1.2	-0.5	0.6	-1.3
Change on year	121	90	-19	-25	127	-79	86	31
Change %	0.8	0.6	-6.1	-1.3	4.1	-1.5	2.5	9.4
Economic activity rates (%)¹								
People	MGWG	LF22	YCAC	YCAJ	YCAM	YCAP	LF2C	LFL2
Mar-May 2009	63.5	77.0	41.6	72.3	84.6	85.9	68.2	7.7
Mar-May 2010	63.2	76.6	39.9	70.8	84.6	85.7	68.1	8.4
Jun-Aug 2010	63.4	76.8	37.5	71.6	84.9	85.8	68.3	8.8
Sep-Nov 2010	63.3	76.6	37.2	70.5	85.3	85.8	68.0	9.0
Dec-Feb 2011	63.4	76.8	38.3	70.8	85.2	85.8	68.4	9.1
Mar-May 2011	63.3	76.8	37.4	70.4	85.3	85.7	68.5	9.2
Change on quarter	-0.1	-0.1	-0.9	-0.4	0.2	-0.1	0.0	0.1
Change on year	0.1	0.1	-2.5	-0.3	0.8	0.0	0.3	0.8
Men	MGWH	MGSP	YCAH	YCAK	YCAN	YCAQ	MGWQ	MGWT
Mar-May 2009	70.6	83.6	40.6	76.7	92.8	92.3	76.5	10.6
Mar-May 2010	69.9	82.9	38.3	74.7	92.6	91.6	76.0	11.1
Jun-Aug 2010	70.1	83.0	35.6	75.3	93.3	91.6	75.9	11.8
Sep-Nov 2010	70.1	82.9	35.1	75.4	93.1	91.8	75.6	12.1
Dec-Feb 2011	70.0	83.0	35.4	75.0	92.8	92.0	76.0	11.8
Mar-May 2011	70.0	83.0	35.1	75.0	92.7	92.1	75.9	12.2
Change on quarter	0.0	0.0	-0.3	0.0	-0.1	0.1	-0.1	0.3
Change on year	0.1	0.1	-3.2	0.3	0.1	0.5	-0.1	1.1
Women	MGWI	LF23	YCAI	YCAL	YCAO	YCAR	LF2D	LFL3
Mar-May 2009	56.7	70.4	42.6	67.8	76.2	79.8	60.2	5.4
Mar-May 2010	56.8	70.4	41.5	66.8	76.4	79.9	60.5	6.2
Jun-Aug 2010	57.0	70.7	39.6	67.8	76.4	80.2	60.9	6.3
Sep-Nov 2010	56.8	70.4	39.4	65.4	77.3	79.9	60.7	6.5
Dec-Feb 2011	57.0	70.7	41.3	66.5	77.4	79.7	61.2	6.8
Mar-May 2011	56.9	70.6	39.8	65.8	77.8	79.5	61.4	6.7
Change on quarter	-0.1	-0.1	-1.5	-0.8	0.5	-0.2	0.2	-0.1
Change on year	0.1	0.1	-1.7	-1.0	1.4	-0.5	0.8	0.5

Relationship between columns: 1= 2+8; 2=3+4+5+6+7.

1. Denominator = all persons in the relevant age group.

Source: Labour Force Survey
Labour market statistics enquiries: labour.market@ons.gov.uk

ECONOMIC ACTIVITY AND INACTIVITY

13 Economic inactivity: reasons

United Kingdom (thousands), seasonally adjusted

	Economic inactivity by reason (aged 16 to 64)								Wanting/not wanting a job (aged 16 to 64)	
	Student	Looking after family / home	Temporary sick	Long-term sick	Discouraged	Retired	Other	Does not want a job	Wants a job ¹	
	1	2	3	4	5	6	7	8	9	10
People	LF2M	LF63	LF65	LF67	LF69	LFL8	LF6B	LF6D	LFL9	LFM2
Mar-May 2009	9,144	2,116	2,314	186	2,139	67	1,515	807	6,948	2,196
Mar-May 2010	9,340	2,260	2,316	181	2,213	69	1,511	790	6,984	2,356
Jun-Aug 2010	9,279	2,218	2,279	177	2,207	69	1,522	808	6,881	2,398
Sep-Nov 2010	9,364	2,244	2,275	167	2,201	76	1,558	842	7,010	2,354
Dec-Feb 2011	9,297	2,233	2,285	167	2,157	85	1,539	831	6,943	2,353
Mar-May 2011	9,329	2,275	2,297	167	2,163	78	1,559	791	7,028	2,301
<i>Change on quarter</i>	32	41	12	0	6	-8	20	-40	85	-53
<i>Change %</i>	0.3	1.9	0.5	-0.2	0.3	-8.9	1.3	-4.8	1.2	-2.2
<i>Change on year</i>	-11	14	-19	-14	-50	9	48	1	45	-56
<i>Change %</i>	-0.1	0.6	-0.8	-7.8	-2.3	12.6	3.2	0.1	0.6	-2.4
Men	YBSO	BEEX	BEAQ	BEDI	BEDL	YCFP	BEDR	BEDU	YBWA	YBWD
Mar-May 2009	3,235	1,064	202	83	1,098	37	424	327	2,319	916
Mar-May 2010	3,402	1,149	212	92	1,144	41	450	314	2,369	1,033
Jun-Aug 2010	3,386	1,118	205	84	1,140	39	456	344	2,337	1,049
Sep-Nov 2010	3,400	1,102	198	72	1,157	41	473	357	2,384	1,016
Dec-Feb 2011	3,389	1,106	195	76	1,146	53	461	352	2,386	1,002
Mar-May 2011	3,396	1,149	192	75	1,145	43	461	330	2,405	991
<i>Change on quarter</i>	7	43	-3	-1	-1	-9	0	-22	19	-12
<i>Change %</i>	0.2	3.9	-1.4	-1.5	-0.1	-17.7	0.1	-6.2	0.8	-1.2
<i>Change on year</i>	-6	0	-20	-17	1	2	11	16	36	-43
<i>Change %</i>	-0.2	0.0	-9.3	-18.4	0.1	5.8	2.4	5.1	1.5	-4.1
Women	LF2N	LF64	LF66	LF68	LF6A	LFM3	LF6C	LF6E	LFM4	LFM5
Mar-May 2009	5,909	1,052	2,112	103	1,041	29	1,092	480	4,629	1,280
Mar-May 2010	5,938	1,111	2,104	89	1,069	28	1,060	476	4,615	1,323
Jun-Aug 2010	5,893	1,101	2,073	93	1,066	30	1,066	464	4,543	1,349
Sep-Nov 2010	5,964	1,142	2,078	95	1,044	35	1,084	486	4,626	1,338
Dec-Feb 2011	5,908	1,127	2,089	91	1,011	33	1,078	479	4,557	1,351
Mar-May 2011	5,933	1,126	2,105	92	1,018	34	1,098	461	4,623	1,310
<i>Change on quarter</i>	25	-1	15	1	7	2	20	-18	66	-41
<i>Change %</i>	0.4	-0.1	0.7	0.9	0.7	5.4	1.8	-3.8	1.4	-3.0
<i>Change on year</i>	-5	15	1	3	-51	6	37	-15	8	-13
<i>Change %</i>	-0.1	1.3	0.0	3.1	-4.8	22.4	3.5	-3.2	0.2	-1.0
Percentage of economically inactive aged from 16 to 64 (%)										
People	LF6V	LF6X	LF6Z	LF73	LF75	LF77	LF79	LF7B	LF7D	LF7F
Mar-May 2009	100	23.1	25.3	2.0	23.4	0.7	16.6	8.8	76.0	24.0
Mar-May 2010	100	24.2	24.8	1.9	23.7	0.7	16.2	8.5	74.8	25.2
Jun-Aug 2010	100	23.9	24.6	1.9	23.8	0.7	16.4	8.7	74.2	25.8
Sep-Nov 2010	100	24.0	24.3	1.8	23.5	0.8	16.6	9.0	74.9	25.1
Dec-Feb 2011	100	24.0	24.6	1.8	23.2	0.9	16.6	8.9	74.7	25.3
Mar-May 2011	100	24.4	24.6	1.8	23.2	0.8	16.7	8.5	75.3	24.7
Men	BEBP	BEEH	BEEK	BEEN	BEEQ	BEET	BEEW	BEEZ	BEAS	BEGT
Mar-May 2009	100	32.9	6.3	2.6	33.9	1.2	13.1	10.1	71.7	28.3
Mar-May 2010	100	33.8	6.2	2.7	33.6	1.2	13.2	9.2	69.6	30.4
Jun-Aug 2010	100	33.0	6.1	2.5	33.7	1.2	13.5	10.2	69.0	31.0
Sep-Nov 2010	100	32.4	5.8	2.1	34.0	1.2	13.9	10.5	70.1	29.9
Dec-Feb 2011	100	32.7	5.8	2.2	33.8	1.6	13.6	10.4	70.4	29.6
Mar-May 2011	100	33.8	5.7	2.2	33.7	1.3	13.6	9.7	70.8	29.2
Women	LF6W	LF6Y	LF72	LF74	LF76	LF78	LF7A	LF7C	LF7E	LF7G
Mar-May 2009	100	17.8	35.7	1.7	17.6	0.5	18.5	8.1	78.3	21.7
Mar-May 2010	100	18.7	35.4	1.5	18.0	0.5	17.9	8.0	77.7	22.3
Jun-Aug 2010	100	18.7	35.2	1.6	18.1	0.5	18.1	7.9	77.1	22.9
Sep-Nov 2010	100	19.2	34.8	1.6	17.5	0.6	18.2	8.1	77.6	22.4
Dec-Feb 2011	100	19.1	35.4	1.5	17.1	0.6	18.2	8.1	77.1	22.9
Mar-May 2011	100	19.0	35.5	1.5	17.2	0.6	18.5	7.8	77.9	22.1

Relationship between columns : 1=2+3+4+5+6+7+8; 1=9+10.

Source: Labour Force Survey
Labour market statistics enquiries: labour.market@ons.gov.uk

1. This series comprises those who say they would like a regular paid job, but who do not meet the internationally agreed definition of unemployment because they have not been looking for work in the last four weeks and/or they were unable to start working within two weeks.

ECONOMIC ACTIVITY AND INACTIVITY

14 Educational status, economic activity and inactivity of people aged from 16 to 24

March to May 2011

United Kingdom (thousands) seasonally adjusted

	All aged 16 to 24				In full-time education (FTE)				Not in full-time education (FTE) ¹			
	Total	Employed	Unemployed	Economically inactive	Total	Employed ²	Unemployed ²	Economically inactive	Total	Employed	Unemployed	Economically inactive
	1	2	3	4	5	6	7	8	9	10	11	12
Levels												
People												
16-17	1,490	355	202	933	1,230	263	133	834	260	92	69	99
18-24	5,832	3,394	715	1,724	1,832	592	140	1,100	4,000	2,801	575	623
16-24	7,322	3,749	917	2,656	3,062	855	273	1,934	4,260	2,894	644	722
Men												
16-17	762	161	107	495	615	108	60	447	147	53	46	48
18-24	2,964	1,789	433	741	881	251	77	553	2,083	1,537	356	189
16-24	3,726	1,950	540	1,236	1,496	360	137	1,000	2,230	1,590	403	236
Women												
16-17	727	194	96	438	615	154	73	387	113	39	22	51
18-24	2,869	1,605	282	982	951	341	63	547	1,917	1,264	219	435
16-24	3,596	1,799	377	1,420	1,566	495	136	934	2,030	1,303	241	486

Changes on quarter (changes since December 2010 to February 2011)

People												
16-17	-7	0	-16	9	-1	-2	-23	25	-6	2	8	-16
18-24	0	4	-26	23	36	5	0	31	-36	-2	-26	-8
16-24	-7	4	-42	32	35	3	-24	56	-42	1	-18	-25
Men												
16-17	-4	4	-7	0	1	2	-15	15	-5	2	8	-15
18-24	0	1	-2	1	21	-5	8	18	-20	6	-10	-17
16-24	-3	5	-9	1	22	-4	-7	33	-25	9	-2	-32
Women												
16-17	-4	-4	-8	9	-2	-4	-8	10	-2	0	0	-1
18-24	0	3	-24	21	15	11	-8	13	-16	-8	-16	8
16-24	-4	-2	-33	30	13	6	-17	24	-17	-8	-16	7

Rates(%)³

People												
16-17		23.8	36.3	62.6		21.4	33.7	67.8		35.5	42.7	38.1
18-24		58.2	17.4	29.6		32.3	19.1	60.0		70.0	17.0	15.6
16-24		51.2	19.7	36.3		27.9	24.2	63.2		67.9	18.2	17.0
Men												
16-17		21.1	39.8	64.9		17.6	35.7	72.6		35.9	46.8	32.5
18-24		60.4	19.5	25.0		28.5	23.4	62.7		73.8	18.8	9.1
16-24		52.3	21.7	33.2		24.0	27.6	66.8		71.3	20.2	10.6
Women												
16-17		26.7	33.0	60.2		25.1	32.2	62.9		35.0	36.1	45.3
18-24		55.9	14.9	34.2		35.8	15.6	57.5		65.9	14.8	22.7
16-24		50.0	17.3	39.5		31.6	21.6	59.7		64.2	15.6	23.9

Changes on quarter (changes since December 2010 to February 2011)

People												
16-17		0.1	-1.7	0.9		-0.2	-3.5	2.1		1.7	2.3	-5.2
18-24		0.1	-0.5	0.4		-0.4	-0.2	0.5		0.6	-0.6	-0.1
16-24		0.1	-0.7	0.5		-0.2	-1.6	1.1		0.7	-0.4	-0.4
Men												
16-17		0.6	-2.2	0.3		0.2	-5.7	2.3		2.6	3.6	-8.9
18-24		0.0	-0.1	0.0		-1.3	2.3	0.6		1.0	-0.5	-0.7
16-24		0.2	-0.3	0.1		-0.6	-0.8	1.2		1.2	-0.2	-1.3
Women												
16-17		-0.4	-1.4	1.5		-0.6	-1.7	1.9		0.4	-0.2	-0.5
18-24		0.1	-1.1	0.8		0.5	-2.2	0.5		0.1	-0.8	0.6
16-24		0.0	-1.2	0.9		0.1	-2.2	1.0		0.1	-0.8	0.5

Relationship between columns: 1=5+9; 2=6+10; 3=7+11; 4=8+12.

Source: Labour Force Survey

Labour market statistics enquiries: labour.market@ons.gov.uk

1. Not in full-time education includes people in part-time education and/or some form of training. Estimates of the number of young people who are not in employment, education or training ("NEET") cannot therefore be derived from this table.

2. People in full-time education are employed if they have a part-time job or unemployed if they are looking for part-time employment.

3. Denominator = all persons in the relevant age group for economically active, total in employment and economically inactive; economically active for unemployment.

EARNINGS, PRODUCTIVITY & UNIT WAGE COSTS

15 Average Weekly Earnings - total pay¹

Standard Industrial Classification (2007)

Great Britain, seasonally adjusted

	Whole Economy (100%) ²			Private sector (77%) ^{2 4 5}			Public sector (23%) ^{2 4 5}		
	Weekly Earnings (£)	% changes year on year		Weekly Earnings (£)	% changes year on year		Weekly Earnings (£)	% changes year on year	
		Single month	3 month average ³		Single month	3 month average ³		Single month	3 month average ³
	KAB9	KAC2	KAC3	KAC4	KAC5	KAC6	KAC7	KAC8	KAC9
May 09	444	0.7	0.4	441	0.1	-0.1	447	2.8	2.6
Mar 10 (r)	467	4.9	4.0	457	4.3	3.8	466	4.9	4.3
Apr 10 (r)	448	0.8	3.8	444	-0.2	3.7	462	3.1	3.9
May 10 (r)	450	1.6	2.4	446	1.2	1.7	455	1.8	3.3
Jun 10	450	1.1	1.2	443	0.1	0.3	469	4.4	3.1 (r)
Jul 10	450	1.8	1.5 (r)	446	1.7	1.0 (r)	462	2.2	2.8 (r)
Aug 10	451	2.1	1.7	448	1.9	1.2	464	2.2	2.9
Sep 10	453	2.2	2.1	449	2.0	1.9	467	2.4	2.3
Oct 10	452	2.0	2.1	449	2.0	2.0	468	2.6	2.4
Nov 10	454	2.1	2.1	450	2.0	2.0	470	2.4	2.5
Dec 10	455	1.2	1.8	448	1.1	1.7	467	2.2	2.4
Jan 11	456	3.9	2.4	452	4.2	2.4	472	2.4	2.3
Feb 11	449	1.5	2.2	452	0.9	2.0	472	2.2	2.3
Mar 11 (r)	477	2.0	2.4	465	1.8	2.3	476	2.2	2.3
Apr 11 (r)	459	2.5	2.0	456	2.6	1.8	471	2.1	2.2
May 11 (p)	461	2.3	2.3	456	2.3	2.2	464	1.9	2.1
	Services, SIC 2007 sections G-S (85%) ²			Finance and business services, SIC 2007 sections K-N (20%) ²			Public sector excluding financial services (22%) ^{2 5}		
	Weekly Earnings (£)	% changes year on year		Weekly Earnings (£)	% changes year on year		Weekly Earnings (£)	% changes year on year	
		Single month	3 month average ³		Single month	3 month average ³		Single month	3 month average ³
	K5BZ	K5C2	K5C3	K5C4	K5C5	K5C6	KAD8	KAD9	KAE2
May 09	430	1.2	0.5	556	-0.3	-1.5	446	2.8	2.6
Mar 10 (r)	443	4.2	4.2	570	10.1	7.6	455	2.7	2.7
Apr 10 (r)	434	0.7	3.7	573	0.1	8.1	455	1.8	2.4
May 10 (r)	435	1.1	2.0	581	4.6	4.8	449	0.5	1.7
Jun 10	435	0.9	0.9	569	0.2	1.6	458	2.2	1.5 (r)
Jul 10	436	1.8	1.3 (r)	576	3.2	2.6 (r)	457	1.9	1.5 (r)
Aug 10	438	2.1	1.6	579	3.5	2.3	458	1.8	2.0
Sep 10	441	2.3	2.0	586	4.7	3.8	461	2.2	2.0
Oct 10	441	2.4	2.2	587	4.5	4.3	462	2.3	2.1
Nov 10	442	2.5	2.4	589	4.0	4.4	463	2.3	2.3
Dec 10	439	1.7	2.2	583	2.2	3.6	461	2.1	2.2
Jan 11	439	4.2	2.8	585	10.4	5.4	465	2.4	2.3
Feb 11	442	1.3	2.4	600	1.8	4.6	465	2.0	2.2
Mar 11 (r)	454	2.6	2.7	609	6.7	6.1	465	2.3	2.2
Apr 11 (r)	447	3.0	2.3	604	5.5	4.6	463	1.8	2.0
May 11 (p)	446	2.5	2.7	603	3.7	5.3	456	1.6	1.9
	Manufacturing, SIC 2007 section C (9%) ²			Construction, SIC 2007 section F (5%) ²			Wholesaling, retailing, hotels & restaurants, SIC 2007 sections G & I (23%) ²		
	Weekly Earnings (£)	% changes year on year		Weekly Earnings (£)	% changes year on year		Weekly Earnings (£)	% changes year on year	
		Single month	3 month average ³		Single month	3 month average ³		Single month	3 month average ³
	K5CA	K5CB	K5CC	K5CD	K5CE	K5CF	K5CG	K5CH	K5CI
May 09	499	-0.4	0.9	533	0.3	1.2	288	0.2	-0.5
Mar 10 (r)	543	8.6	6.1	564	5.2	2.9	313	9.4	4.4
Apr 10 (r)	521	3.8	6.0	537	-0.2	2.2	296	3.4	5.0
May 10 (r)	521	4.3	5.6	536	0.5	1.9	292	1.2	4.6
Jun 10	520	3.2	3.8 (r)	532	1.1	0.5 (r)	293	1.7	2.1 (r)
Jul 10	521	4.7	4.1 (r)	529	-0.7	0.3	295	2.2	1.7
Aug 10	525	4.2	4.0	531	-1.8	-0.5	295	1.9	1.9
Sep 10	526	3.9	4.3	532	0.1	-0.8	295	1.6	1.9
Oct 10	526	3.9	4.0	528	-2.1	-1.3	295	1.2	1.5
Nov 10	525	2.9	3.5	529	-2.2	-1.4	295	1.2	1.3
Dec 10	523	1.3	2.7	516	-4.7	-3.0	295	1.1	1.2
Jan 11	529	2.3	2.1	541	-0.5	-2.5	297	1.2	1.2
Feb 11	520	0.1	1.2	548	1.4	-1.3	295	-0.9	0.5
Mar 11 (r)	544	0.2	0.9	555	-1.6	-0.3	302	-3.6	-1.2
Apr 11 (r)	529	1.7	0.7	533	-0.9	-0.4	298	0.8	-1.3
May 11 (p)	528	1.4	1.1	538	0.4	-0.7	299	2.5	-0.2

Source: Monthly Wages & Salaries Survey

Earnings enquiries: 01633 456773

1. Estimates of total pay include bonuses but exclude arrears of pay.

2. The figure in brackets is the percentage of whole economy employment in that sector or industry for the latest time period.

3. The three month average figures are the changes in the average seasonally adjusted values for the three months ending with the relevant month compared with the same period a year earlier.

4. From July 2009 Royal Bank of Scotland Group plc and Lloyds Banking Group plc are classified to the public sector; previously they are in the private sector.

5. From June 2010 English sixth form colleges are classified to the public sector; previously they are in the private sector.

EARNINGS, PRODUCTIVITY & UNIT WAGE COSTS

15(1) Average Weekly Earnings - bonus pay

Standard Industrial Classification (2007)

Great Britain, seasonally adjusted

	Whole Economy (100%) ¹						Private sector (77%) ^{1 3 4}			Public sector (23%) ^{1 3 4}		
	Weekly Earnings (£)	% changes year on year			Weekly Earnings (£)	% changes year on year		Weekly Earnings (£)	% changes year on year			
		Single month	3 month average ²			Single month	3 month average ²		Single month	3 month average ²		
	KAF4	KAF5	KAF6	KAF7	KAF8	KAF9	KAG2	KAG3	KAG4			
May 09	24	-25.2	-16.3	28	-28.6	-17.6	3	-10.6	25.8			
Mar 10 (r)	30	20.6	20.3	37	22.7	16.5	5	131.6	42.5			
Apr 10 (r)	24	-19.7	11.5	30	-16.6	15.0	3	-31.9	9.9			
May 10 (r)	25	3.2	0.2	34	23.0	7.9	1	-73.5	-10.3			
Jun 10	24	-5.7	-8.2 (r)	28	-12.2	-3.6 (r)	6	172.5	0.5 (r)			
Jul 10	23	-4.7	-2.4 (r)	28	-3.6	1.6 (r)	3	-1.4	18.1 (r)			
Aug 10	23	-5.2	-5.2	28	-7.4	-7.8	4	88.0	77.6			
Sep 10	24	1.8	-2.7	30	3.3	-2.6	4	-28.3	5.4			
Oct 10	24	0.8	-0.9	29	1.2	-1.1	4	13.6	9.9			
Nov 10	24	-5.8	-1.2	30	-5.7	-0.5	4	4.5	-6.9			
Dec 10	22	-10.2	-5.2	28	-9.0	-4.6	2	-31.4	-4.1			
Jan 11	25	27.6	1.9	31	29.7	2.8	3	-51.6	-30.6			
Feb 11	24	-3.8	2.7	30	-4.0	3.5	4	10.7	-27.7			
Mar 11 (r)	30	-0.1	5.8	38	0.6	6.5	4	-26.6	-26.5			
Apr 11 (r)	26	10.9	2.0	33	11.9	2.6	3	0.3	-7.7			
May 11 (p)	25	-1.3	2.8	33	-2.8	2.8	1	1.9	-14.3			

	Services, SIC 2007 sections G-S (85%) ¹			Finance and business services, SIC 2007 sections K-N (20%) ¹			Public sector excluding financial services (22%) ^{1 4}		
	Weekly Earnings (£)	% changes year on year		Weekly Earnings (£)	% changes year on year		Weekly Earnings (£)	% changes year on year	
		Single month	3 month average ²		Single month	3 month average ²		Single month	3 month average ²
	K5CS	K5CT	K5CU	K5CV	K5CW	K5CX	KAH3	KAH4	KAH5
May 09	25	-23.5	-16.7	58	-39.5	-23.5	3	-13.2	37.2
Mar 10 (r)	30	17.3	18.7	73	30.3	22.1	3	-12.3	-25.0
Apr 10 (r)	25	-20.1	10.2	65	-24.4	14.1	1	-79.3	-53.8
May 10 (r)	26	2.3	-1.4	86	50.0	12.5	1	-80.1	-59.0
Jun 10	24	-5.8	-8.7 (r)	65	-18.9	-3.2 (r)	4	74.4	-46.5 (r)
Jul 10	24	-4.3	-2.6 (r)	63	-1.9	6.2 (r)	2	-28.1	-17.4 (r)
Aug 10	24	-5.7	-5.2	61	0.6	-7.8	3	93.3	40.6
Sep 10	25	-0.3	-3.4	72	15.8	4.8	3	-30.5	-4.1
Oct 10	24	-0.1	-2.0	69	6.2	7.5	3	51.2	18.6
Nov 10	25	-4.5	-1.7	71	1.9	7.7	2	-2.4	-2.3
Dec 10	23	-12.6	-5.9	60	-18.9	-4.2	2	-31.6	3.3
Jan 11	24	30.7	1.7	65	44.0	3.8	2	-38.7	-26.1
Feb 11	24	-4.3	1.8	67	-3.7	1.7	2	11.5	-23.1
Mar 11 (r)	31	1.2	6.7	81	9.8	13.0	2	-55.1	-33.3
Apr 11 (r)	27	8.9	1.8	77	17.9	7.8	1	14.9	-22.1
May 11 (p)	25	-2.1	2.5	75	-13.1	3.3	1	-14.9	-34.5

	Manufacturing, SIC 2007 section C (9%) ¹			Construction, SIC 2007 section F (5%) ¹			Wholesaling, retailing, hotels & restaurants, SIC 2007 sections G & I (23%) ¹		
	Weekly Earnings (£)	% changes year on year		Weekly Earnings (£)	% changes year on year		Weekly Earnings (£)	% changes year on year	
		Single month	3 month average ²		Single month	3 month average ²		Single month	3 month average ²
	K5D3	K5D4	K5D5	K5D6	K5D7	K5D8	K5D9	K5DA	K5DB
May 09	19	-40.6	-15.9	17	-33.6	-17.3	17	-13.7	-16.1
Mar 10 (r)	25	33.3	16.1	33	46.9	22.5	27	76.8	28.0
Apr 10 (r)	19	-13.2	13.3	16	-34.8	1.3	20	22.2	36.1
May 10 (r)	20	6.4	7.4	17	0.0	2.8	16	-1.9	31.1
Jun 10	17	-8.9	-5.7 (r)	16	-17.6	-19.6 (r)	16	-6.9	4.3 (r)
Jul 10	20	15.2	3.9 (r)	16	-17.4	-12.1 (r)	16	2.5	-2.2 (r)
Aug 10	20	3.9	3.0	14	-28.9	-21.4	16	-12.2	-5.8
Sep 10	21	12.0	10.2	19	16.7	-11.4	16	-9.4	-6.6
Oct 10	21	31.5	15.0	11	-46.0	-22.0	16	-2.9	-8.3
Nov 10	20	-9.9	9.0	14	-28.8	-22.0	16	-6.5	-6.3
Dec 10	21	4.2	6.4	13	-34.1	-36.4	18	11.0	0.3
Jan 11	24	29.9	6.9	18	-9.9	-24.3	17	-1.6	0.7
Feb 11	20	-11.4	6.4	24	46.0	-2.3	17	-15.2	-2.8
Mar 11	23	-6.8	2.0	27	-16.9	0.0	21	-22.8 (r)	-14.6
Apr 11 (r)	23	15.8	-1.7	18	14.0	6.5	18	-10.3	-16.8
May 11 (p)	21	4.3	3.5	16	-8.7	-7.2	18	8.3	-10.8

Source: Monthly Wages & Salaries Survey
Earnings enquiries: 01633 456773

1. The figure in brackets is the percentage of whole economy employment in that sector or industry for the latest time period.

2. The three month average figures are the changes in the average seasonally adjusted values for the three months ending with the relevant month compared with the same period a year earlier.

3. From July 2009 Royal Bank of Scotland Group plc and Lloyds Banking Group plc are classified to the public sector; previously they are in the private sector.

4. From June 2010 English sixth form colleges are classified to the public sector; previously they are in the private sector.

EARNINGS, PRODUCTIVITY & UNIT WAGE COSTS

16 Average Weekly Earnings - regular pay¹

Standard Industrial Classification (2007)

Great Britain, seasonally adjusted

	Whole Economy (100%) ²			Private sector (77%) ^{2,4,5}			Public sector (23%) ^{2,4,5}		
	Weekly Earnings (£)	% changes year on year		Weekly Earnings (£)	% changes year on year		Weekly Earnings (£)	% changes year on year	
		Single month	3 month average ³		Single month	3 month average ³		Single month	3 month average ³
	KAI7	KAI8	KAI9	KAJ2	KAJ3	KAJ4	KAJ5	KAJ6	KAJ7
May 09	419	2.3	2.0	412	2.0	1.9	446	3.3	2.7
Mar 10	425	2.1 (r)	1.8	416	1.3	0.9	457	4.0	3.9
Apr 10	424	1.5	1.7	414	0.7	0.9 (r)	459	3.4	3.8
May 10 (r)	424	1.2	1.6	413	0.4	0.8	461	3.6	3.7
Jun 10	425	1.4	1.4	414	0.8	0.6	459	2.6	3.2 (r)
Jul 10	427	2.2	1.6	417	2.0	1.1	460	2.3	2.8
Aug 10	428	2.3	2.0	418	2.4	1.7	460	1.8	2.2
Sep 10	429	2.2	2.2	418	2.0	2.1	463	2.5	2.2
Oct 10	429	2.3	2.3	419	2.2	2.2	464	2.5	2.3
Nov 10	430	2.5	2.3	420	2.4	2.2	466	2.4	2.5
Dec 10	430	2.0	2.3	419	1.8	2.1	467	2.5	2.5
Jan 11	433	2.3	2.3	422	2.1	2.1	468	2.5	2.5
Feb 11	432	2.2	2.2	421	2.1	2.0	468	2.2	2.4
Mar 11	433	1.8	2.1	422 (r)	1.4	1.9	470	2.8	2.5
Apr 11 (r)	433	2.2	2.0	422	2.1	1.9	469	2.2	2.4
May 11 (p)	434	2.4	2.1	424	2.6	2.1	470	1.8	2.3
	Services, SIC 2007 sections G-S (85%) ²			Finance and business services, SIC 2007 sections K-N (20%) ²			Public sector excluding financial services (22%) ^{2,5}		
	Weekly Earnings (£)	% changes year on year		Weekly Earnings (£)	% changes year on year		Weekly Earnings (£)	% changes year on year	
		Single month	3 month average ³		Single month	3 month average ³		Single month	3 month average ³
	K5DL	K5DM	K5DN	K5DO	K5DP	K5DQ	KAK6	KAK7	KAK8
May 09	404	2.6	2.3	495	3.7	3.5	444	3.3	2.7
Mar 10	409	1.8	1.6	507 (r)	2.8	2.0	452	3.0	2.8
Apr 10	408	1.2	1.4	504	2.0	2.0	454	2.5	2.7
May 10 (r)	409	1.1	1.4	504	2.0	2.3	456	2.6	2.7
Jun 10	409	1.2	1.2	504	1.8	1.9 (r)	453	1.4	2.2 (r)
Jul 10	412	2.1	1.5	510	3.4	2.4	455	2.1	2.0
Aug 10	413	2.3	1.9	513	3.7	3.0	454	1.5	1.7
Sep 10	414	2.3	2.2	514	4.2	3.8	458	2.3	2.0
Oct 10	414	2.4	2.4	517	4.6	4.2	459	2.3	2.0
Nov 10	415	2.6	2.5	518	4.2	4.3	460	2.3	2.3
Dec 10	416	2.5	2.5	523	5.0	4.6	461	2.3	2.3
Jan 11	418	2.7	2.6	528	5.5	4.9	462	2.4	2.4
Feb 11	418	2.6	2.6	526	5.6	5.4	462	2.0	2.3
Mar 11	418	2.2	2.5	526	3.8	4.9	464	2.6	2.4
Apr 11 (r)	419	2.7	2.5	528	4.8	4.7	462	1.8	2.2
May 11 (p)	420	2.8	2.5	531	5.2	4.6	463	1.5	2.0
	Manufacturing, SIC 2007 section C (9%) ²			Construction, SIC 2007 section F (5%) ²			Wholesaling, retailing, hotels & restaurants, SIC 2007 sections G & I (23%) ²		
	Weekly Earnings (£)	% changes year on year		Weekly Earnings (£)	% changes year on year		Weekly Earnings (£)	% changes year on year	
		Single month	3 month average ³		Single month	3 month average ³		Single month	3 month average ³
	K5DU	K5DV	K5DW	K5DX	K5DY	K5DZ	K5E2	K5E3	K5E4
May 09	482	1.6	1.4	513	1.6	2.4	272	1.1	0.9
Mar 10	504	5.4	4.8	524	1.4	1.5	279	2.6 (r)	1.8
Apr 10 (r)	502	4.6	5.0	522	1.2	1.5	276	2.2	2.0
May 10 (r)	501	4.1	4.7	515	0.4	1.0	276	1.4	2.1
Jun 10	503	3.7	4.1	517	1.6	1.1	278	2.2	1.9 (r)
Jul 10	502	4.5	4.1	511	-0.3	0.6	279	2.1	1.9
Aug 10	505	4.3	4.2	506	-1.1	0.0	279	2.6	2.3
Sep 10	505	3.7	4.2	512	-0.5	-0.7	279	2.0	2.2
Oct 10	504	3.3	3.7	517	-0.8	-0.8	278	1.4	2.0
Nov 10	505	3.2	3.4	516	-1.0	-0.8	279	1.6	1.7
Dec 10	505	1.2	2.5	507	-2.7	-1.5	277	0.5	1.1
Jan 11	505	1.5	2.0	524	0.0	-1.2	279	1.4	1.1
Feb 11	505	1.0	1.2	524	0.3	-0.8	278	0.4	0.8
Mar 11	507	0.6	1.0	527	0.5	0.3	278	-0.1	0.6
Apr 11 (r)	507	1.0	0.9	516	-1.2	-0.1	281	1.6	0.6
May 11 (p)	508	1.3	1.0	519	0.6	0.0	282	2.2	1.2

Source: Monthly Wages & Salaries Survey

Earnings enquiries: 01633 456773

1. Estimates of regular pay exclude bonuses and arrears of pay.

2. The figure in brackets is the percentage of whole economy employment in that sector or industry for the latest time period.

3. The three month average figures are the changes in the average seasonally adjusted values for the three months ending with the relevant month compared with the same period a year earlier.

4. From July 2009 Royal Bank of Scotland Group plc and Lloyds Banking Group plc are classified to the public sector; previously they are in the private sector.

5. From June 2010 English sixth form colleges are classified to the public sector; previously they are in the private sector.

EARNINGS, PRODUCTIVITY & UNIT WAGE COSTS

17 Productivity and unit wage costs¹

United Kingdom
seasonally adjusted

	Whole Economy				Manufacturing ²			Services ²	
	Unit Wage Costs	Output per Worker	Output per Job	Output per Hour	Unit Wage Costs	Output per Job	Output per Hour	Output per Job	Output per Hour
Indices (2006=100)									
	LNNK	A4YM	LNNN	LZVB	LNNQ	LNNX	LZVF	GG5I	GGM4
2009 Q1	110.2	97.9	97.6	99.6	110.3	97.0	99.3	99.4	100.9
2009 Q2	111.5	98.1	97.9	99.2	110.0	98.7	99.9	99.5	100.2
2009 Q3	111.6	98.1	97.8	99.6	110.7	98.0	99.5	99.1	100.4
2009 Q4	111.6	98.4	98.2	100.0	111.0	99.3	101.1	99.7	100.9
2010 Q1	112.6	99.1	99.0	100.5	110.4	102.9	102.5	100.1	101.5
2010 Q2	111.0	99.6	99.3	100.7	106.5	104.8	104.1	100.0	101.3
2010 Q3	111.3	99.6	99.4	100.9	107.0	105.3	104.6	100.1	101.5
2010 Q4	112.7	99.3	99.1	100.4	105.8	106.5	105.1	99.6	101.3
2011 Q1	113.3	99.4	99.1	100.8	106.7	107.4	104.7	99.6	101.6
Change on year									
	LOJE	A4YN	LNNP	LZVD	LOUW	LNNU	LZVH	GG5J	GGM5
2009 Q1	5.9	-4.3	-4.5	-2.1	10.5	-8.7	-6.2	-2.9	-0.5
2009 Q2	6.2	-3.7	-3.8	-3.2	7.0	-5.8	-4.0	-2.4	-2.5
2009 Q3	5.1	-3.3	-3.4	-1.9	7.3	-5.8	-4.5	-2.6	-1.1
2009 Q4	3.2	-1.1	-1.1	0.0	3.4	-1.1	0.0	-0.7	0.2
2010 Q1	2.2	1.2	1.5	0.9	0.0	6.0	3.2	0.7	0.5
2010 Q2	-0.4	1.4	1.4	1.5	-3.1	6.2	4.2	0.5	1.1
2010 Q3	-0.2	1.6	1.7	1.3	-3.3	7.4	5.1	1.0	1.1
2010 Q4	1.0	0.9	0.9	0.4	-4.7	7.2	4.0	-0.1	0.4
2011 Q1	0.6	0.3	0.0	0.3	-3.3	4.4	2.2	-0.5	0.2
Change on quarter									
	DMWL	A4YO	DMWR	TXBB	DMWB	DMWV	TXBF	GG5K	GGM6
2009 Q1	1.9	-1.6	-1.7	-0.5	2.8	-3.4	-1.7	-1.0	0.2
2009 Q2	1.1	0.2	0.3	-0.3	-0.3	1.7	0.6	0.1	-0.7
2009 Q3	0.1	-0.1	-0.1	0.3	0.7	-0.7	-0.4	-0.4	0.2
2009 Q4	0.0	0.4	0.5	0.4	0.3	1.2	1.6	0.6	0.5
2010 Q1	1.0	0.7	0.8	0.5	-0.6	3.7	1.4	0.4	0.6
2010 Q2	-1.4	0.5	0.3	0.2	-3.5	1.9	1.6	-0.1	-0.2
2010 Q3	0.3	0.0	0.1	0.2	0.5	0.5	0.4	0.1	0.2
2010 Q4	1.2	-0.3	-0.3	-0.5	-1.1	1.1	0.5	-0.5	-0.2
2011 Q1	0.5	0.1	-0.1	0.4	0.9	0.9	-0.3	0.0	0.3

Sources: National Accounts, Index of Production, Index of Services, Labour Force Survey, Productivity Jobs and Productivity Hours and Monthly Wages and Salaries Survey

Productivity and Unit Wage Costs enquiries: 01633 456299

1. More detailed estimates are available in the Productivity Statistical Bulletin at <http://www.statistics.gov.uk/StatBase/Product.asp?vlnk=7476>

2. The manufacturing and services series are as defined by Standard Industrial Classification 2003 (SIC 2003).

REGIONAL AND INTERNATIONAL SUMMARY

18(1) Regional summary of labour market headline indicators¹

Thousands, seasonally adjusted

Headline estimates for March to May 2011

	Economically active		Employment		Unemployment		Economically inactive	
	Aged 16+	Aged 16-64	Aged 16+	Aged 16-64	Aged 16+	Aged 16+	Aged 16-64	Aged 16-64
	Level	Rate (%) ²	Level	Rate (%) ²	Level	Rate (%) ³	Level	Rate (%) ²
	1	2	3	4	5	6	7	8
North East	1,255	73.1	1,132	65.8	123	9.8	451	26.9
North West	3,413	75.0	3,120	68.4	292	8.6	1,110	25.0
Yorkshire and The Humber	2,630	74.9	2,403	68.3	227	8.6	862	25.1
East Midlands	2,329	78.4	2,146	72.1	183	7.9	622	21.6
West Midlands	2,658	74.9	2,431	68.3	226	8.5	863	25.1
East of England	3,060	80.5	2,861	75.2	199	6.5	715	19.5
London	4,248	75.6	3,851	68.5	397	9.3	1,339	24.4
South East	4,436	79.4	4,184	74.7	253	5.7	1,113	20.6
South West	2,677	78.5	2,506	73.3	170	6.4	704	21.5
England	26,705	76.9	24,634	70.8	2,071	7.8	7,778	23.1
Wales	1,459	74.6	1,344	68.5	115	7.9	483	25.4
Scotland	2,703	77.7	2,498	71.7	205	7.6	761	22.3
Great Britain	30,867	76.9	28,476	70.8	2,391	7.7	9,021	23.1
Northern Ireland	864	73.3	803	68.0	61	7.1	308	26.7
United Kingdom	31,731	76.8	29,279	70.7	2,452	7.7	9,329	23.2

Change on quarter (change since December 2010 to February 2011)⁴

	Economically active		Employment		Unemployment		Economically inactive	
	Aged 16+	Aged 16-64	Aged 16+	Aged 16-64	Aged 16+	Aged 16+	Aged 16-64	Aged 16-64
	Level	Rate (%) ²	Level	Rate (%) ²	Level	Rate (%) ³	Level	Rate (%) ²
North East	-2	-0.3	5	0.2	-7	-0.6	5	0.3
North West	-9	-0.4	-33	-0.9	24	0.7	17	0.4
Yorkshire and The Humber	-24	-0.5	-8	0.0	-17	-0.5	18	0.5
East Midlands	25	0.9	22	0.8	3	0.1	-25	-0.9
West Midlands	-8	-0.3	24	0.6	-32	-1.2	10	0.3
East of England	40	1.0	21	0.6	18	0.5	-36	-1.0
London	14	-0.1	4	-0.3	10	0.2	9	0.1
South East	-22	-0.7	-13	-0.5	-9	-0.2	37	0.7
South West	-18	-0.8	-23	-0.9	5	0.2	26	0.8
England	-5	-0.2	1	-0.1	-6	0.0	61	0.2
Wales	-2	0.2	7	0.6	-9	-0.6	-3	-0.2
Scotland	9	0.3	20	0.6	-11	-0.4	-10	-0.3
Great Britain	3	-0.1	28	0.0	-25	-0.1	48	0.1
Northern Ireland	22	1.4	22	1.5	0	-0.2	-16	-1.4
United Kingdom	24	-0.1	50	0.0	-26	-0.1	32	0.1

Change on year (change since March to May 2010)

	Economically active		Employment		Unemployment		Economically inactive	
	Aged 16+	Aged 16-64	Aged 16+	Aged 16-64	Aged 16+	Aged 16+	Aged 16-64	Aged 16-64
	Level	Rate (%) ²	Level	Rate (%) ²	Level	Rate (%) ³	Level	Rate (%) ²
North East	-22	-1.9	-21	-1.9	-1	0.1	33	1.9
North West	-11	-0.3	-16	-0.4	6	0.2	14	0.3
Yorkshire and The Humber	-57	-2.0	-37	-1.3	-20	-0.6	71	2.0
East Midlands	65	1.7	48	1.2	17	0.5	-48	-1.7
West Midlands	-18	-1.0	-13	-0.9	-5	-0.1	37	1.0
East of England	103	1.8	99	1.8	4	-0.1	-64	-1.8
London	95	0.3	82	0.2	13	0.1	1	-0.3
South East	33	-0.1	47	0.1	-14	-0.4	12	0.1
South West	11	0.0	5	-0.2	6	0.2	3	0.0
England	200	-0.1	195	-0.1	5	0.0	60	0.1
Wales	15	0.8	31	1.6	-16	-1.2	-13	-0.8
Scotland	41	1.1	55	1.5	-14	-0.7	-35	-1.1
Great Britain	256	0.1	281	0.2	-25	-0.1	11	-0.1
Northern Ireland	31	2.1	29	2.0	2	0.0	-23	-2.1
United Kingdom	286	0.1	309	0.2	-23	-0.1	-11	-0.1

Relationship between columns: 1=3+5

1. Labour Force Survey is tabulated by region of residence.

2. Denominator = all persons aged 16 to 64.

3. Denominator = Total economically active.

4. Quarter on quarter changes at regional level are particularly subject to sampling variability and should be interpreted in the context of changes over several quarters rather than in isolation.

Source: Labour Force Survey
Labour market statistics enquiries: labour.market@ons.gov.uk

REGIONAL AND INTERNATIONAL SUMMARY

18(2) Regional labour market summary

Thousands, seasonally adjusted

	Employer Surveys ¹		Jobcentre Plus administrative system ¹					
	Workforce jobs ² (March 2011)		Claimant count ³ (June 2011)					
	Total		Total		Men		Women	
	Level		Level	Rate (%) ⁴	Level	Rate (%) ⁴	Level	Rate (%) ⁴
North East	1,138		83.9	6.8	58.3	8.7	25.6	4.5
North West	3,364		188.6	5.4	130.5	6.9	58.1	3.6
Yorkshire and The Humber	2,521		151.3	5.8	104.8	7.3	46.5	3.9
East Midlands	2,179		102.7	4.7	69.3	5.8	33.4	3.4
West Midlands	2,547		163.0	6.0	111.4	7.5	51.6	4.2
East of England	2,863		110.4	3.8	72.7	4.6	37.7	2.8
London	4,757		226.4	4.6	139.4	5.3	87.0	3.9
South East	4,440		135.7	3.1	90.6	3.9	45.1	2.2
South West	2,678		82.6	3.1	55.6	3.9	27.0	2.1
England	26,485		1244.6	4.6	832.6	5.7	412.0	3.3
Wales	1,350		74.5	5.3	52.0	6.8	22.5	3.5
Scotland	2,651		141.3	5.3	98.6	6.9	42.7	3.4
Great Britain	30,486		1460.4	4.7	983.2	5.8	477.2	3.3
Northern Ireland	842		59.7	6.7	43.0	8.9	16.7	4.2
United Kingdom	31,354		1520.1	4.7	1026.2	5.9	493.9	3.3

Changes on period (period specified below):

	Workforce jobs ² (Change on December 2010)		Jobcentre Plus administrative system ¹					
	Total		Claimant count ³ (Change on May 2011)					
	Total		Total		Men		Women	
	Level		Level	Rate (%) ⁴	Level	Rate (%) ⁴	Level	Rate (%) ⁴
North East	7		1.0	0.1	0.7	0.1	0.3	0.1
North West	29		3.2	0.1	1.9	0.1	1.3	0.1
Yorkshire and The Humber	9		3.1	0.1	2.0	0.1	1.1	0.1
East Midlands	-8		2.4	0.1	1.6	0.1	0.8	0.1
West Midlands	0		2.2	0.1	1.3	0.1	0.9	0.1
East of England	-8		2.6	0.1	1.6	0.1	1.0	0.1
London	-37		2.8	0.1	1.4	0.1	1.4	0.1
South East	35		2.2	0.1	1.5	0.1	0.7	0.0
South West	55		1.4	0.1	0.9	0.1	0.5	0.0
England	83		20.9	0.1	12.9	0.1	8.0	0.1
Wales	-7		1.7	0.1	1.2	0.2	0.5	0.1
Scotland	42		1.5	0.1	0.8	0.1	0.7	0.1
Great Britain	119		24.1	0.1	14.9	0.1	9.2	0.1
Northern Ireland	2		0.4	0.0	0.1	0.0	0.3	0.1
United Kingdom	121		24.5	0.1	15.0	0.1	9.5	0.1

Labour market statistics enquiries: labour.market@ons.gov.uk

1. Workforce jobs are tabulated by region of workplace. Claimant count is tabulated by region of claimant's residence.

2. HM Forces stationed abroad are included in the UK jobs estimates but not in the regional jobs estimates.

3. Count of claimants of Jobseeker's Allowance.

4. Denominator = Claimant count + Workforce jobs.

REGIONAL AND INTERNATIONAL SUMMARY

19 International comparisons

As published by EUROSTAT: (not seasonally adjusted)				As published by EUROSTAT on 1 July 2011 (seasonally adjusted)					
	Latest period	Employment rate (%) ^{1,2}	Change on year %		Latest Period	Unemployment rate (%) ³	Change on period %	Change on year %	
European Union (EU)				European Union (EU)					
Austria	YXSN	Jan-Mar 11	71.1	0.5	Austria	ZXDS	May 11	4.3	0.1
Belgium	YXSO	Oct-Dec 10	62.7	0.9	Belgium	ZXDI	May 11	7.3	0.1
Bulgaria	A495	Jan-Mar 11	57.3	-1.5	Bulgaria	A492	May 11	11.2	0.1
Cyprus	A4AC	Jan-Mar 11	68.8	0.0	Cyprus	A4AN	May 11	7.4	0.2
Czech Republic	A4AD	Jan-Mar 11	65.0	0.9	Czech Republic	A4AO	May 11	6.5	-0.1
Denmark	YXSP	Jan-Mar 11	72.2	-0.8	Denmark	ZXDJ	May 11	7.4	0.1
Estonia	A4AE	Jan-Mar 11	63.2	4.3	Estonia	A4AP	2011 Q1	13.8	-0.6
Finland	YXSQ	Jan-Mar 11	67.1	0.6	Finland	ZXDU	May 11	7.8	-0.1
France	YXSR	Oct-Dec 10	63.7	0.2	France	ZXDN	May 11	9.5	-0.1
Germany	YXSS	Oct-Dec 10	71.7	0.1	Germany	ZXDK	May 11	6.0	-0.1
Greece	YXST	Jan-Mar 11	56.9	-3.2	Greece	ZXDL	2011 Q1	15.0	0.9
Hungary	A4AF	Jan-Mar 11	54.6	0.1	Hungary	A4AQ	May 11	10.0	-0.3
Ireland	YXSU	Jan-Mar 11	58.9	-0.8	Ireland	ZXDO	May 11	14.0	0.0
Italy	YXSV	Oct-Dec 10	57.0	-0.1	Italy	ZXDP	May 11	8.1	0.1
Latvia	A4AG	Jan-Mar 11	60.2	2.5	Latvia	A4AR	2011 Q1	16.2	-0.8
Lithuania	A4AH	Jan-Mar 11	59.1	2.3	Lithuania	A4AS	2011 Q1	16.3	-1.0
Luxembourg	YXSW	Oct-Dec 10	65.3	0.5	Luxembourg	ZXDQ	May 11	4.5	0.2
Malta	A4AI	Oct-Dec 10	56.3	1.4	Malta	A4AT	May 11	6.2	0.0
Netherlands	YXSX	Jan-Mar 11	74.4	0.2	Netherlands	ZXDR	May 11	4.2	0.0
Poland	A4AJ	Oct-Dec 10	59.6	0.2	Poland	A4AU	May 11	9.2	0.0
Portugal	YXSY	Jan-Mar 11	64.6	-1.2	Portugal	ZXDT	May 11	12.4	0.0
Romania	A494	Oct-Dec 10	57.9	0.5	Romania	A48Z	2011 Q1	7.0	-0.4
Slovak Republic	A4AK	Oct-Dec 10	59.3	0.1	Slovak Republic	A4AV	May 11	13.3	-0.1
Slovenia	A4AL	Jan-Mar 11	63.7	-2.6	Slovenia	A4AW	May 11	8.3	0.0
Spain	YXSZ	Jan-Mar 11	57.7	-0.6	Spain	ZXDM	May 11	20.9	0.2
Sweden	YXTA	Jan-Mar 11	72.7	1.7	Sweden	ZXDV	May 11	7.7	0.2
United Kingdom	ANZ6	Oct-Dec 10	69.7	0.0	United Kingdom ⁴	ZXDW	Mar 11	7.6	-0.1
Total EU⁵	A496	Oct-Dec 10	64.2	-0.1	Total EU⁵	A493	May 11	9.3	0.0
Eurozone ⁵	YXTC	Oct-Dec 10	64.3	-0.2	Eurozone ⁵	ZXDH	May 11	9.9	0.0
As published by national statistical offices				As published by national statistical offices (seasonally adjusted)					
Canada (NSA)	IUUK	Apr-Jun 11	72.5	0.4	Canada	ZXDZ	Jun 11	7.4	0.0
Japan (NSA) ⁶	YXTF	Jan-Mar 11	69.7	0.1	Japan ⁶	ZXDY	May 11	4.5	-0.2
United Kingdom (SA)	LF24	Mar-May 11	70.7	0.2	United Kingdom ⁴	MGSX	Mar-May 11	7.7	-0.1
United States (NSA)	YXTE	Apr-Jun 11	66.6	-0.3	United States	ZXDZ	Jun 11	9.2	0.1

Sources: Eurostat, national statistical offices.
Labour market statistics enquiries: labour.market@ons.gov.uk

1. The UK employment rate shown in the lower part of the table - as published by the Office for National Statistics - is seasonally adjusted; all other employment rates are unadjusted.

2. All employment rates for EU countries published by EUROSTAT (including the rate for the UK) are based on the population aged 15-64. The rates for Canada and Japan are also based on the population aged 15-64, but the rate for the US is for those aged 16-64. The employment rate for the UK published by the Office for National Statistics is based on the population aged 16-64.

5. The "Total EU" series consist of all 27 EU countries. The Eurozone figures consist of the following EU countries: Austria, Belgium, Cyprus, Estonia, Finland, France, Germany, Greece, Ireland, Italy, Luxembourg, Malta, Netherlands, Portugal, Slovak Republic, Slovenia and Spain.

6. The Japanese employment rate for January-March 2011 and the unemployment rate from January 2009 onwards exclude those regions of Japan affected by the March 2011 earthquake and tsunami.

3. Unemployment rates published by EUROSTAT for most EU countries (but not for the UK), are calculated by extrapolating from the most recent LFS data using monthly registered unemployment data. A standard population basis (15-74) is used by EUROSTAT except for Spain, Italy and the UK (16-74). The unemployment rate for the US is based on those aged 16 and over, but the rates for Canada and Japan are for those aged 15 and over. All unemployment rates are seasonally adjusted.

4. The unemployment rate for the UK published by EUROSTAT is based on the population aged 16-74 but the unemployment rate for the UK published by the Office for National Statistics is based on those aged 16 and over. There are other minor definitional differences.

LABOUR DISPUTES

20 Labour disputes

United Kingdom, not seasonally adjusted

	Working days lost (thousands) ^{1,2}	Working days lost in the Public Sector (thousands) ^{1,2}	Working days lost in the Private Sector (thousands) ^{1,2}	Number of stoppages ^{3,4}	Number of stoppages in the Public Sector ⁴	Number of stoppages in the Private Sector ⁴	Workers involved (thousands) ^{1,3}
	BBFW	F8XZ	F8Y2	BLUU	F8Y3	F8Y4	BLUT
2010							
May	13	4	9	9	6	3	9
Jun	7	1	6	13	10	3	6
Jul	2	2	1	16	13	3	2
Aug	2	1	1	7	6	1	1
Sep	11	9	2	9	3	6	10
Oct	13	12	2	11	4	7	11
Nov	24	24	1	11	6	5	13
Dec	7	2	5	15	7	8	4
2011							
Jan	(p) 9	4	5	17	9	8	4
Feb	(p) 2	1	1	12	7	5	2
Mar	(p) 49	16	34	11	7	4	38
Apr	(p) 13	5	9 (r)	15 (r)	10	5 (r)	6
May	(p) 11	2	9	20	15	5	2
Cumulative totals 12 months to:							
May 10	722	625	96	99	46	53	308
May 11 (p)	152	78	74	112	72	40	76

Relationship between columns 1=2+3; 4=5+6

Source: ONS Labour Disputes Inquiry
Labour disputes enquiries 01633 456724

1. Estimates of working days lost and workers involved are shown to the nearest thousand. Unrounded estimates of less than 500 therefore round to zero.

2. Due to rounding the working days lost for the public and private sectors may not add up to the total working days lost.

3. The latest 12 month cumulative totals for the figures in these columns will not necessarily equal the sum of the 12 months as some disputes continue for over one month. These disputes appear in each month's data, but only once in the total.

4. These series exclude disputes which do not result in a stoppage of work, those involving fewer than ten workers or lasting less than one day unless the total number of working days lost in the dispute is 100 or more.

VACANCIES

21 Vacancies¹ by size of business

United Kingdom (thousands), seasonally adjusted

	All Vacancies AP2Y	Number of employees				
		1-9	10-49	50-249	250-2499	2500+
		ALY5	ALY6	ALY7	ALY8	ALY9
Levels						
Apr-Jun 2009	429	49	43	45	92	199
Apr-Jun 2010	484	67 (r)	61	62	88	208
May-Jul 2010	476	67	59	61	86	202
Jun-Aug 2010	463	65	58	61	87	192
Jul-Sep 2010	458	68	58	61	87	184
Aug-Oct 2010	455	69	57	60	85	183
Sep-Nov 2010	468	72	56	59	81	199
Oct-Dec 2010	481	69	54	58	84	216
Nov-Jan 2011	498	73	55	58	87	225
Dec-Feb 2011	495	71	59	57	90	219
Jan-Mar 2011 (r)	483	73	59	56	90	206
Feb-Apr 2011 (r)	469	68	62	56	90	193
Mar-May 2011 (r)	457	72	58	55	87	185
Apr-Jun 2011 (p)	458	71	57	56	89	185
Change on quarter *	-26	-2	-3	0	0	-21
Change % *	-5.3	-2.5	-4.2	0.0	-0.4	-10.2
Change on year	-26	4	-4	-6	2	-23
Change %	-5.5	6.3	-6.6	-9.6	2.1	-10.9

1. Excludes Agriculture, Forestry and Fishing.

Source: ONS Vacancy Survey

Labour market statistics enquiries: labour.market@ons.gov.uk

* Change on previous non-overlapping three month rolling average time period.

21(1) Vacancies¹ and Unemployment

United Kingdom (thousands), seasonally adjusted

	All Vacancies ¹ AP2Y	Unemployment ² MGSC	Number of unemployed people per vacancy JPC5
Levels			
Mar-May 2009	440	2,377	5.4
Mar-May 2010	477	2,475	5.2
Jun-Aug 2010	463	2,453	5.3
Sep-Nov 2010	468	2,495	5.3
Dec-Feb 2011	495	2,478	5.0
Mar-May 2011	457 (r)	2,452	5.4
Change on quarter	-38	-26	0.4
Change %	-7.7	-1.0	
Change on year	-19	-23	0.2
Change %	-4.0	-0.9	

Source: ONS Vacancy Survey/ Labour Force Survey

Labour market statistics enquiries: labour.market@ons.gov.uk

1. Excludes Agriculture, Forestry and Fishing.

2. Unemployment estimates are produced from the Labour Force Survey (LFS) and are always one period behind the ONS Vacancy Survey estimates. This table therefore shows estimates for the same periods as shown in table 1 (which shows LFS estimates).

VACANCIES

22 Vacancies by industry

Standard Industrial Classification (2007)

United Kingdom (thousands), seasonally adjusted

SIC 2007 sections	All vacancies ¹	Mining & quarrying	Manu- facturing	Electricity, gas, steam & air conditioning supply ²	Water supply, sewerage, waste & remediation activities ²	Construction	Wholesale & retail trade; repair of motor vehicles and motor cycles	Transport & storage	Accommoda- tion & food service activities	Information & communica- tion
	B-S	B	C	D	E	F	G	H	I	J
	AP2Y	JP9H	JP9I	JP9J	JP9K	JP9L	JP9M	JP9N	JP9O	JP9P
Levels (thousands)										
Apr-Jun 2009	429	1	27	2	1	12	78	17	39	24
Apr-Jun 2010	484	1	30	3	2	10	95 (r)	19	46	26
May-Jul 2010	476	1	34	3	2	11	94	19	45	26
Jun-Aug 2010	463	1	33	3	2	10	92	19	44	26
Jul-Sep 2010	458	1	33	3	2	10	93	21	44	26
Aug-Oct 2010	455	1	32	3	2	10	92	21	44	27
Sep-Nov 2010	468	1	33	3	1	11	93	21	42	27
Oct-Dec 2010	481	1	34	3	1	13	95	21	43	28
Nov-Jan 2011	498	1	36	3	1	14	96	20	45	30
Dec-Feb 2011	495	1	38	3	1	13	95	20	47	31
Jan-Mar 2011 (r)	483	2	40	3	2	13	92	20	45	33
Feb-Apr 2011 (r)	469	2	42	3	2	12	91	20	44	33
Mar-May 2011 (r)	457	2	40	3	2	11	92	20	43	32
Apr-Jun 2011 (p)	458	2	39	3	2	11	93	21	43	33
Change on quarter *	-26	0	-1	0	0	-2	2	1	-2	0
Change % *	-5.3	13.3	-2.0	0.0	-21.1	-13.6	2.0	4.5	-4.2	-0.3
Change on year	-26	1	9	0	0	0	-2	2	-3	6
Change %	-5.5	41.7	28.9	0.0	-6.3	3.8	-2.1	9.9	-6.3	23.6
	AP2Z	JPA2	JPA3	JPA4	JPA5	JPA6	JPA7	JPA8	JPA9	JPB2
Vacancies per 100 employee jobs										
Apr-Jun 2009	1.6	1.5	1.1	2.9	0.8	0.9	1.8	1.4	2.2	2.4
Apr-Jun 2010	1.8	2.2	1.3	3.6	1.0	0.8	2.2	1.6	2.6	2.7
May-Jul 2010	1.8	2.0	1.4	3.8	1.0	0.9	2.1	1.6	2.5	2.7
Jun-Aug 2010	1.8	2.0	1.4	3.8	1.1	0.8	2.1	1.6	2.5	2.7
Jul-Sep 2010	1.7	2.0	1.4	3.9	1.1	0.7	2.1	1.7	2.5	2.7
Aug-Oct 2010	1.7	2.2	1.3	3.9	1.0	0.8	2.1	1.8	2.5	2.7
Sep-Nov 2010	1.8	2.4	1.3	3.8	0.8	0.9	2.1	1.8	2.4	2.8
Oct-Dec 2010	1.8	2.4	1.4	3.4	0.8	1.0	2.2	1.7	2.4	2.9
Nov-Jan 2011	1.9	2.6	1.5	3.4	0.8	1.1	2.2	1.7	2.5	3.1
Dec-Feb 2011	1.9	2.6	1.6	3.5	0.8	1.0	2.2	1.7	2.6	3.2
Jan-Mar 2011	1.8	2.8	1.7 (r)	3.6	1.2	1.0	2.1	1.7	2.5	3.3
Feb-Apr 2011 (r)	1.8	3.0	1.7	3.5	1.4	0.9	2.1	1.6	2.5	3.3
Mar-May 2011 (r)	1.7	3.0	1.7	3.6	1.4	0.9	2.1	1.7	2.4	3.3
Apr-Jun 2011 (p)	1.7	3.1	1.6	3.6	1.0	0.8	2.1	1.7	2.4	3.3
Change on quarter *	-0.1	0.4	0.0	0.0	-0.3	-0.1	0.0	0.1	-0.1	0.0
Change on year	-0.1	0.9	0.4	0.0	-0.1	0.0	0.0	0.2	-0.2	0.6
SIC 2007 sections	Financial & insurance activities	Real estate activities ²	Professional scientific & technical activities	Administrative & support service activities	Public admin & defence; compulsory social security	Education	Human health & social work activities ²	Arts, entertainment & recreation ²	Other service activities	Total services
	K	L	M	N	O	P	Q	R	S	G-S
	JP9Q	JP9R	JP9S	JP9T	JP9U	JP9V	JP9W	JP9X	JP9Y	JP9Z
Levels (thousands)										
Apr-Jun 2009	21	5	26	22	26	48	62	11	8	398
Apr-Jun 2010	31	7	37 (r)	31	11	48	61	12	12	448
May-Jul 2010	31	7	36	30	10	41	62	12	14	437
Jun-Aug 2010	29	7	37	30	9	36	61	11	12	424
Jul-Sep 2010	29	6	37	30	7	31	62	12	12	419
Aug-Oct 2010	29	6	38	29	8	30	60	11	11	417
Sep-Nov 2010	31	6	39	28	20	30	59	10	13	430
Oct-Dec 2010	33	5	40	28	32	30	55	9	12	442
Nov-Jan 2011	33	5	42	28	44	30	50	8	12	458
Dec-Feb 2011	33	6	41	28	38	28	50	9	11	451
Jan-Mar 2011	31	5	42	31 (r)	27	28	51	11	10	437
Feb-Apr 2011	29	5	42	30	16	27 (r)	53	11	9	421
Mar-May 2011 (r)	28	5	43	30	9	28	51	11	8	411
Apr-Jun 2011 (p)	27	4	43	30	8	29	52	10	9	412
Change on quarter *	-4	-1	1	-1	-19	1	1	-1	-1	-25
Change % *	-11.6	-12.0	1.4	-2.0	-71.2	3.2	2.0	-6.6	-11.8	-5.7
Change on year	-4	-3	6	-1	-4	-19	-10	-2	-3	-36
Change %	-12.5	-40.5	16.7	-2.3	-31.6	-40.0	-16.0	-13.9	-27.4	-7.9
	JPB3	JPB4	JPB5	JPB6	JPB7	JPB8	JPB9	JPC2	JPC3	JPC4
Vacancies per 100 employee jobs										
Apr-Jun 2009	1.9	1.2	1.5	1.1	1.7	2.0	1.7	1.8	1.5	1.8
Apr-Jun 2010	3.0	1.9	2.0	1.5	0.7	2.0 (r)	1.7	1.8	2.2	2.0
May-Jul 2010	2.9	1.8	2.0	1.5	0.7	1.7	1.7	1.9	2.5	2.0
Jun-Aug 2010	2.8	1.9	2.1	1.4	0.6	1.5	1.7	1.7	2.2	1.9
Jul-Sep 2010	2.7	1.6	2.1	1.5	0.5	1.2	1.7	1.8	2.2	1.9
Aug-Oct 2010	2.8	1.6	2.1	1.4	0.5	1.2	1.7	1.7	1.9	1.9
Sep-Nov 2010	2.9	1.6	2.2	1.4	1.3	1.2	1.7	1.6	2.3	1.9
Oct-Dec 2010	3.1	1.4	2.2	1.3	2.1	1.2	1.5	1.4	2.2	2.0
Nov-Jan 2011	3.2	1.4	2.3	1.3	2.9	1.2	1.4	1.2	2.2	2.0
Dec-Feb 2011	3.1	1.4	2.3	1.3	2.5	1.2	1.4	1.4	2.1	2.0
Jan-Mar 2011 (r)	2.9	1.3	2.4	1.5	1.8	1.1	1.4	1.6	1.8	2.0
Feb-Apr 2011	2.8	1.3	2.3	1.5	1.0	1.1	1.5	1.8	1.7 (r)	1.9
Mar-May 2011	2.7	1.2	2.4	1.4	0.6	1.1 (r)	1.4	1.6	1.4	1.8
Apr-Jun 2011 (p)	2.6	1.1	2.4	1.5	0.5	1.2	1.5	1.5	1.6	1.8
Change on quarter *	-0.3	-0.2	0.0	0.0	-1.3	0.0	0.0	-0.1	-0.2	-0.1
Change on year	-0.4	-0.8	0.3	0.0	-0.2	-0.8	-0.3	-0.2	-0.6	-0.2

1. Excludes Agriculture, Forestry and Fishing.

Source: ONS Vacancy Survey

2. Not seasonally adjusted. These series do not display seasonality. Therefore the unadjusted series is the best estimate of a 'seasonally adjusted' series.

* Change on previous non-overlapping three month rolling average time period.

Labour market statistics enquiries: labour.market@ons.gov.uk

REDUNDANCIES

23 Redundancies levels and rates¹

United Kingdom, (seasonally adjusted)

	People (aged 16 and over)		Men (aged 16 and over)		Women (aged 16 and over)	
	Level (000s) ²	Rate ¹	Level (000s) ²	Rate ¹	Level (000s) ²	Rate ¹
	BEAO	BEIR	BEIU	BEIX	BEJA	BEJD
Mar-May 2009	304	12.0	202	15.7	102	8.3
Mar-May 2010	159	6.4	109	8.7	50	4.1
Jun-Aug 2010	143	5.8	95	7.6	48	4.0
Sep-Nov 2010	159	6.4	96	7.6	62	5.1
Dec-Feb 2011	127	5.1	80	6.3	48	3.9
Mar-May 2011	144	5.7	83	6.5	61	5.0
<i>Change on quarter</i>	<i>16</i>	<i>0.6</i>	<i>3</i>	<i>0.2</i>	<i>13</i>	<i>1.1</i>
<i>Change %</i>	<i>12.9</i>		<i>3.8</i>		<i>28.0</i>	
<i>Change on year</i>	<i>-15</i>	<i>-0.7</i>	<i>-26</i>	<i>-2.2</i>	<i>11</i>	<i>0.9</i>
<i>Change %</i>	<i>-9.7</i>		<i>-24.3</i>		<i>21.9</i>	

Source: Labour Force Survey

Labour market statistics enquiries: labour.market@ons.gov.uk

1. The redundancy rate is the ratio of the redundancy level for the given quarter to the seasonally adjusted number of employees in the previous quarter, multiplied by 1,000.
2. The redundancies levels as derived directly from the Labour Force Survey do not currently display seasonality. For this reason series BEAO is currently identical to the not seasonally adjusted series BEYV shown at Table 24.

24 Redundancies by industry¹

United Kingdom (thousands of people aged 16 and over), not seasonally adjusted

SIC 2007 sections	Total redundancies ²	Manufacturing C	Construction F	Wholesale & retail trade; repair of motor vehicles and motor cycles G	Transport & storage, accommodation & food service activities, information & communication H,I,J	Financial & insurance and real estate activities K,L	Prof. scientific & technical activities, admin & support service activities M,N	Public Administration, etc., education, human health and social work activities ³ O-Q	Total services ⁴ G-T
People	BEYV								
Jan-Mar 2009	299	63	50	56	47	18	39	11	179
Jan-Mar 2010	176	27	29	32	29	10	24	11	114
Apr-Jun 2010	151	26	21	19	26	13	23	16	102
Jul-Sep 2010	146	18	18	22	24	*	23	29	107
Oct-Dec 2010	147	15	24	20	20	12	23	20	104
Jan-Mar 2011	123	12	17	20	15	*	17	13	76
<i>Change on year</i>	<i>-53</i>	<i>-16</i>	<i>-13</i>	<i>-12</i>	<i>-14</i>	<i>*</i>	<i>-7</i>	<i>2</i>	<i>-38</i>
<i>Change %</i>	<i>-30.2</i>	<i>-57.0</i>	<i>-42.9</i>	<i>-37.6</i>	<i>-47.4</i>	<i>*</i>	<i>-28.6</i>	<i>19.9</i>	<i>-33.5</i>

Source: Labour Force Survey

Labour market statistics enquiries: labour.market@ons.gov.uk

1. The estimates in this table are for calendar quarters only whereas the estimates at Table 23 are for rolling three-monthly time periods.
2. The total series includes those people who did not state their industry. The series also includes SIC 2007 categories A (Agriculture, forestry and fishing), B (Mining and quarrying), D (Electricity, gas, etc.) and E (Water supply, sewerage, etc.). These sectors are not shown separately in this table as the sample size is too small to provide reliable estimates. See footnote 2 at Table 23.
3. Includes both public and private sectors.
4. Other Services are not shown separately in this table as the sample size is too small to provide reliable estimates.

Further redundancy estimates, including data for redundancy rates by industry, region, and age group and re-employment rates by age group are available at:

www.statistics.gov.uk/STATBASE/Product.asp?vlnk=9474

Benefits

25 Key out of work benefits¹

Great Britain and abroad (thousands),
not seasonally adjusted

Statistical Groups²

Number of claimants	Total ³	GB Jobseeker ^{3,4}	Employment & Support Allowance and incapacity benefits ⁵	Lone Parent ⁶	Other Income related ⁷
	J9CL	BCJG	J9CM	J9CN	J9CO
Nov 08	4,535.8	1,022.5	2,605.5	729.0	178.8
Feb 09	4,937.7	1,416.2	2,603.5	736.0	181.9
May 09	5,042.0	1,516.9	2,621.4	720.5	183.2
Aug 09	5,081.6	1,548.7	2,632.7	715.7	184.5
Nov 09	5,019.2	1,516.9	2,618.4	695.7	188.2
Feb 10	5,098.3	1,600.2	2,614.8	692.0	191.4
May 10	4,931.4	1,447.0	2,613.1	679.2	192.2
Aug 10	4,867.3	1,397.0	2,606.6	672.4	191.4
Nov 10	4,783.2	1,356.4	2,586.4	648.3	192.0
<i>Change on year</i>	<i>-236.0</i>	<i>-160.5</i>	<i>-32.0</i>	<i>-47.4</i>	<i>3.8</i>
<i>Change %</i>	<i>-4.7</i>	<i>-10.6</i>	<i>-1.2</i>	<i>-6.8</i>	<i>2.0</i>

Proportions (%) ^{8,9}	Total ³	GB Jobseeker ^{3,4}	Employment & Support Allowance and incapacity benefits ⁵	Lone Parent ⁶	Other Income related ⁷
	JVZ9	JW22	JW23	JW24	JW25
Nov 08	11.7	2.6	6.7	1.9	0.5
Feb 09	12.7	3.6	6.7	1.9	0.5
May 09	12.9	3.9	6.7	1.8	0.5
Aug 09	13.0	4.0	6.8	1.8	0.5
Nov 09	12.9	3.9	6.7	1.8	0.5
Feb 10	13.1	4.1	6.7	1.8	0.5
May 10	12.6	3.7	6.7	1.7	0.5
Aug 10	12.5	3.6	6.7	1.7	0.5
Nov 10	12.3	3.5	6.6	1.7	0.5
<i>Change on year</i>	<i>-0.6</i>	<i>-0.4</i>	<i>-0.1</i>	<i>-0.1</i>	<i>0.0</i>

Source: Dept. for Work & Pensions (DWP)
Labour market statistics enquiries: labour.market@ons.gov.uk

1. This table includes the key out of work statistical groups, showing all claimants. Carers, who are not subject to labour market activation policies in the same way as other groups, are not included.
2. Claimants have been assigned to a statistical group according to a hierarchy to avoid double counting of claimants. The order is shown in the table (ie, Jobseeker followed by incapacity benefits, etc.). For example, a person claiming both incapacity benefits and Lone Parent benefit will be recorded under the former but not the latter.
3. The estimates for Jobseekers claimants shown in this table are for Great Britain (GB) and are consistent with the not seasonally adjusted estimates for the United Kingdom shown at Table 10 (Claimant Count) of this Statistical Bulletin. However, the figures are different from the estimates of jobseekers claimants shown at Table 1.1 of the Dept. for Work & Pensions (DWP) Quarterly Statistical Summary. This is because of methodological differences between the Benefits estimates produced by the DWP and the Claimant Count estimates produced by the Office for National Statistics.
4. "Jobseekers" are recipients of Jobseeker's Allowance.
5. This series includes claimants of Employment and Support Allowance, Incapacity Benefit and Severe Disablement Allowance.
6. "Lone parents" are single recipients of Income Support with a child under qualifying age.
7. "Other Income related" covers recipients of Income Support or Pension Credit who are not included in "incapacity benefits" or "Lone parents".
8. Proportions of population receiving state benefits have been calculated using residence based populations for those aged 16 to 64 for both men and women. The age at which women reach state pension age has been gradually increasing from 60 since April 2010. Movements in the time series over this period will partly reflect these changing eligibility criteria.
9. The jobseekers proportions shown in this table are different from the non seasonally adjusted claimant count rate shown at Table 10 of this Statistical Bulletin as the denominator for the latter is workforce jobs plus claimant count.

Next publication: Wednesday 17 August 2011

Issued by: Office for National Statistics, Government Buildings, Cardiff Road, Newport NP10 8XG

Media contact:

Tel **Media Relations Office 0845 604 1858**

Emergency on-call 07867 906553

E-mail **press.office@ons.gov.uk**

Statistical contacts:

Tel **Richard Clegg 01633 455400** (Briefing)

Tel **Nick Palmer 01633 455839** (Labour Force Survey)

Tel **Bob Watson 01633 455070** (Claimant count, vacancies and benefits)

Tel **David Matthews 01633 456756** (Workforce jobs & public sector employment)

Tel **Eric Crane 01633 455092** (Earnings)

Tel **Ainslie Restieaux 01633 456299** (Productivity)

Tel **James Scruton 01633 456724** (Labour disputes)

E-mail **labour.market@ons.gov.uk**

Website **www.ons.gov.uk**